

Datasheet for ABIN7125265

SWSAP1 Protein (AA 1-229) (His tag)[Go to Product page](#)**1** Image

Overview

| | |
|-------------------------------|---|
| Quantity: | 50 µg |
| Target: | SWSAP1 |
| Protein Characteristics: | AA 1-229 |
| Origin: | Human |
| Source: | Escherichia coli (E. coli) |
| Protein Type: | Recombinant |
| Purification tag / Conjugate: | This SWSAP1 protein is labelled with His tag. |
| Application: | ELISA, Western Blotting (WB) |

Product Details

| | |
|------------|---|
| Purity: | Greater than 95 % as determined by SDS-PAGE |
| Sterility: | 0.2 µm filtered |

Target Details

| | |
|-------------------|---|
| Target: | SWSAP1 |
| Alternative Name: | SWSAP1 (SWSAP1 Products) |
| Background: | ATPase SWSAP1, C19orf39, SWAP1_HUMAN, SWIM-type zinc finger 7-associated protein 1, SWS1-associated protein 1, SWS1AP1, SWSAP1, Zinc finger SWIM type containing 7 associated protein 1, ZSWIM7-associated protein 1, ZSWIM7AP1 |
| Molecular Weight: | 25.1 kDa |

Target Details

UniProt: [Q6NVH7](#)

Application Details

Application Notes: Optimal working dilution should be determined by the investigator.

Restrictions: For Research Use only

Handling

Format: Lyophilized

Reconstitution: Centrifuge the vial at 10,000 rpm for 1 minute, reconstitute at 200 µg/mL in sterile distilled water by gentle pipetting 2-3 times, don't vortex

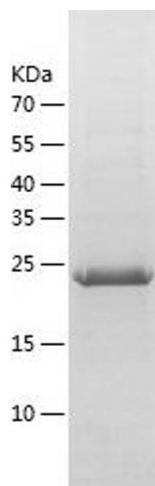
Buffer: Lyophilized from a 0.2 µm filtered solution in 10 mM Hepes, 500 mM NaCl with 5 % trehalose, pH 7.4

Storage: 4 °C, -20 °C

Storage Comment: -20°C for 12 months as lyophilized, 2-8°C for 1 month under sterile conditions after reconstitution

Expiry Date: 12 months

Images



Western Blotting

Image 1.