



[Go to Product page](#)

Datasheet for ABIN7125286

SSX1 Protein (AA 1-188) (His-IF2DI Tag)

1 Image

Overview

Quantity:	50 µg
Target:	SSX1
Protein Characteristics:	AA 1-188
Origin:	Human
Source:	Escherichia coli (E. coli)
Protein Type:	Recombinant
Purification tag / Conjugate:	This SSX1 protein is labelled with His-IF2DI Tag.
Application:	Western Blotting (WB), ELISA

Product Details

Purity:	Greater than 95 % by SDS-PAGE gel analyses
Sterility:	0.2 µm filtered

Target Details

Target:	SSX1
Alternative Name:	SSX1 (SSX1 Products)
Background:	Cancer/testis antigen 5.1, Cancer/testis antigen family 5 member 1, CT5.1, MGC150425, MGC5162, Protein SSX1, sarcoma, synovial, X chromosome related 1, SSRC, SSX1, SSX1_HUMAN, Synovial sarcoma, Synovial sarcoma, X breakpoint 1, X breakpoint 1
Molecular Weight:	42.6 kDa

Target Details

UniProt: [Q16384](#)

Application Details

Application Notes: Optimal working dilution should be determined by the investigator.

Restrictions: For Research Use only

Handling

Format: Lyophilized

Reconstitution: Centrifuge the vial at 10,000 rpm for 1 minute, reconstitute at 200 µg/mL in sterile distilled water by gentle pipetting 2-3 times, don't vortex

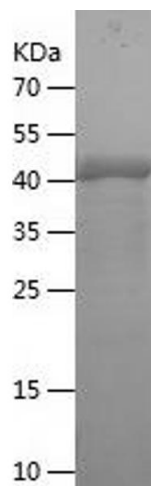
Buffer: Lyophilized from a 0.2 µm filtered solution in PBS with 5 % trehalose, pH 7.4

Storage: 4 °C, -20 °C

Storage Comment: -20°C for 12 months as lyophilized, 2-8°C for 1 month under sterile conditions after reconstitution

Expiry Date: 12 months

Images



Western Blotting

Image 1.