



[Go to Product page](#)

Datasheet for ABIN7125310

TAF1 Protein (AA 1400-1518) (His tag)

1 Image

Overview

Quantity:	50 µg
Target:	TAF1
Protein Characteristics:	AA 1400-1518
Origin:	Human
Source:	Escherichia coli (E. coli)
Protein Type:	Recombinant
Purification tag / Conjugate:	This TAF1 protein is labelled with His tag.
Application:	Western Blotting (WB), ELISA

Product Details

Purity:	Greater than 95 % as determined by SDS-PAGE
Sterility:	0.2 µm filtered

Target Details

Target:	TAF1
Alternative Name:	TAF1 (TAF1 Products)
Background:	BA2R, CCG 1, CCG1, CCGS, Cell cycle G1 phase defect, Cell cycle gene 1 protein, Complementation of cell cycle block G1 to S, DYT3 protein, NSCL 2, NSCL2, OF, p250, TAF 1, TAF(II)250, TAF1 RNA polymerase II, TAF130, TAF145, TAF2A, TAFII 250, TAFII250
Molecular Weight:	13 kDa

Application Details

Application Notes: Optimal working dilution should be determined by the investigator.

Restrictions: For Research Use only

Handling

Format: Lyophilized

Reconstitution: Centrifuge the vial at 10,000 rpm for 1 minute, reconstitute at 200 µg/mL in sterile distilled water by gentle pipetting 2-3 times, don't vortex

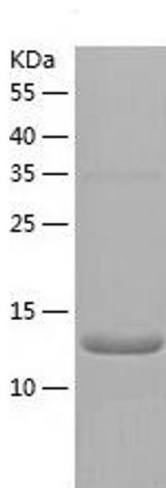
Buffer: Lyophilized from a 0.2 µm filtered solution in 10 mM Hepes, 500 mM NaCl with 5 % trehalose, pH 7.4

Storage: 4 °C, -20 °C

Storage Comment: -20°C for 12 months as lyophilized, 2-8°C for 1 month under sterile conditions after reconstitution

Expiry Date: 12 months

Images



Western Blotting

Image 1.