



[Go to Product page](#)

Datasheet for ABIN7125419

## TOX4 Protein (AA 2-621) (His tag)

### 1 Image

#### Overview

Quantity:	50 µg
Target:	TOX4
Protein Characteristics:	AA 2-621
Origin:	Human
Source:	Escherichia coli (E. coli)
Protein Type:	Recombinant
Purification tag / Conjugate:	This TOX4 protein is labelled with His tag.
Application:	ELISA, Western Blotting (WB)

#### Product Details

Purity:	Greater than 95 % as determined by SDS-PAGE
Sterility:	0.2 µm filtered

#### Target Details

Target:	TOX4
Alternative Name:	TOX4 ( <a href="#">TOX4 Products</a> )
Background:	C14orf92, Epidermal Langerhans cell protein LCP1, KIAA0737, LCP1, MIG7, Migration inducing protein 7, TOX 4, TOX high mobility group box family member 4, Tox4, TOX4_HUMAN
Molecular Weight:	68.1 kDa
UniProt:	<a href="#">O94842</a>

## Application Details

---

Application Notes: Optimal working dilution should be determined by the investigator.

---

Restrictions: For Research Use only

---

## Handling

---

Format: Lyophilized

---

Reconstitution: Centrifuge the vial at 10,000 rpm for 1 minute, reconstitute at 200 µg/mL in sterile distilled water by gentle pipetting 2-3 times, don't vortex

---

Buffer: Lyophilized from a 0.2 µm filtered solution in 10 mM Hepes, 500 mM NaCl with 5 % trehalose, pH 7.4

---

Storage: 4 °C, -20 °C

---

Storage Comment: -20°C for 12 months as lyophilized, 2-8°C for 1 month under sterile conditions after reconstitution

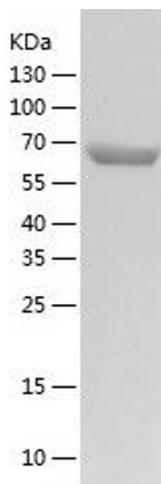
---

Expiry Date: 12 months

---

## Images

---



### Western Blotting

Image 1.