

Datasheet for ABIN7125431

**TCEAL1 Protein (AA 1-159) (His tag)**[Go to Product page](#)**1** Image

## Overview

Quantity:	50 µg
Target:	TCEAL1
Protein Characteristics:	AA 1-159
Origin:	Human
Source:	Escherichia coli (E. coli)
Protein Type:	Recombinant
Purification tag / Conjugate:	This TCEAL1 protein is labelled with His tag.
Application:	ELISA, Western Blotting (WB)

## Product Details

Purity:	Greater than 95 % as determined by SDS-PAGE
Sterility:	0.2 µm filtered

## Target Details

Target:	TCEAL1
Alternative Name:	TCEAL1 ( <a href="#">TCEAL1 Products</a> )
Background:	Highly similar to gene pp21 protein [H.sapiens], Nuclear phosphoprotein p21/SIIR, p21, pp21, SIIR, TCAL1_HUMAN, TCEA like protein 1, TCEA-like protein 1, TCEAL1, Transcription elongation factor A (SII) like 1, Transcription elongation factor A protein like 1
Molecular Weight:	17.4 kDa

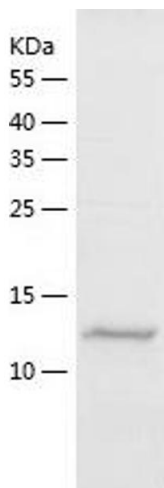
## Application Details

Application Notes:	Optimal working dilution should be determined by the investigator.
Restrictions:	For Research Use only

## Handling

Format:	Lyophilized
Reconstitution:	Centrifuge the vial at 10,000 rpm for 1 minute, reconstitute at 200 µg/mL in sterile distilled water by gentle pipetting 2-3 times, don't vortex
Buffer:	Lyophilized from a 0.2 µm filtered solution in 10 mM Hepes, 500 mM NaCl with 5 % trehalose, pH 7.4
Storage:	4 °C, -20 °C
Storage Comment:	-20°C for 12 months as lyophilized, 2-8°C for 1 month under sterile conditions after reconstitution
Expiry Date:	12 months

## Images



### Western Blotting

Image 1.