



[Go to Product page](#)

Datasheet for ABIN7125485

TMEFF1 Protein (AA 40-330) (His tag)

1 Image

Overview

Quantity:	50 µg
Target:	TMEFF1
Protein Characteristics:	AA 40-330
Origin:	Human
Source:	Escherichia coli (E. coli)
Protein Type:	Recombinant
Purification tag / Conjugate:	This TMEFF1 protein is labelled with His tag.
Application:	Western Blotting (WB), ELISA

Product Details

Purity:	Greater than 95 % as determined by SDS-PAGE
Sterility:	0.2 µm filtered

Target Details

Target:	TMEFF1
Alternative Name:	TR-1 (TMEFF1 Products)
Background:	C9orf2, C9orf3 TMEFF1, C9orf30 TMEFF1, C9orf30 TMEFF1 fusion protein, Cancer/testis antigen family 120 member 1, CT120.1, H 7365, H7365, MSANTD3-TMEFF1 readthrough, TEFF 1, TEFF1, TEFF1_HUMAN, TMEFF 1, TMEFF1, Tomoregulin-1, Tomoregulin-1 precursor, TR 1, TR-1, TR1
Molecular Weight:	31.9 kDa

Target Details

UniProt: [Q8IYR6](#)

Application Details

Application Notes: Optimal working dilution should be determined by the investigator.

Restrictions: For Research Use only

Handling

Format: Lyophilized

Reconstitution: Centrifuge the vial at 10,000 rpm for 1 minute, reconstitute at 200 µg/mL in sterile distilled water by gentle pipetting 2-3 times, don't vortex

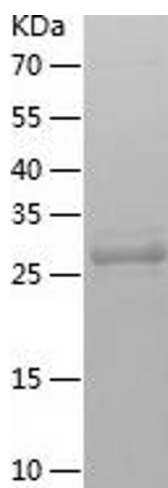
Buffer: Lyophilized from a 0.2 µm filtered solution in 10 mM Hepes, 500 mM NaCl with 5 % trehalose, pH 7.4

Storage: 4 °C, -20 °C

Storage Comment: -20°C for 12 months as lyophilized, 2-8°C for 1 month under sterile conditions after reconstitution

Expiry Date: 12 months

Images



Western Blotting

Image 1.