



[Go to Product page](#)

Datasheet for ABIN7125566

TWF1 Protein (AA 100-350) (His tag)

1 Image

Overview

Quantity:	50 µg
Target:	TWF1
Protein Characteristics:	AA 100-350
Origin:	Human
Source:	Escherichia coli (E. coli)
Protein Type:	Recombinant
Purification tag / Conjugate:	This TWF1 protein is labelled with His tag.
Application:	Western Blotting (WB), ELISA

Product Details

Purity:	Greater than 95 % as determined by SDS-PAGE
Sterility:	0.2 µm filtered

Target Details

Target:	TWF1
Alternative Name:	TWF1 (TWF1 Products)
Background:	A6, A6 protein tyrosine kinase, MGC105817, MGC23788, MGC41876, Protein A6, Protein tyrosine kinase 9, PTK9, PTK9 protein tyrosine kinase 9, TWF 1, twf1, TWF1_HUMAN, Twinfilin, Twinfilin 1, Twinfilin actin binding protein, homolog 1, Twinfilin
Molecular Weight:	27.5 kDa

Target Details

UniProt: [Q12792](#)

Pathways: [Regulation of Actin Filament Polymerization](#), [Maintenance of Protein Location](#)

Application Details

Application Notes: Optimal working dilution should be determined by the investigator.

Restrictions: For Research Use only

Handling

Format: Lyophilized

Reconstitution: Centrifuge the vial at 10,000 rpm for 1 minute, reconstitute at 200 µg/mL in sterile distilled water by gentle pipetting 2-3 times, don't vortex

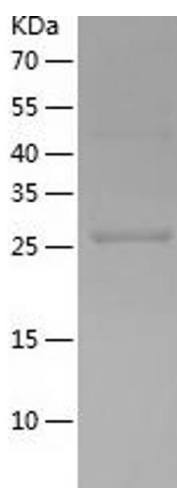
Buffer: Lyophilized from a 0.2 µm filtered solution in 10 mM Hepes, 500 mM NaCl with 5 % trehalose, pH 7.4

Storage: 4 °C, -20 °C

Storage Comment: -20°C for 12 months as lyophilized, 2-8°C for 1 month under sterile conditions after reconstitution

Expiry Date: 12 months

Images



Western Blotting

Image 1.