



[Go to Product page](#)

Datasheet for ABIN7125600

## YOD1 Protein (AA 1-348) (His tag)

### 1 Image

#### Overview

Quantity:	50 µg
Target:	YOD1
Protein Characteristics:	AA 1-348
Origin:	Human
Source:	Escherichia coli (E. coli)
Protein Type:	Recombinant
Purification tag / Conjugate:	This YOD1 protein is labelled with His tag.
Application:	ELISA, Western Blotting (WB)

#### Product Details

Purity:	Greater than 95 % as determined by SDS-PAGE
Sterility:	0.2 µm filtered

#### Target Details

Target:	YOD1
Alternative Name:	YOD1 ( <a href="#">YOD1 Products</a> )
Background:	DUBA-8, DUBA8, HIN-7, HIV-1-induced protease 7, HSHIN7, OTU domain containing 2, OTU domain-containing protein 2, OTU1_HUMAN, OTUD2, PRO0907, RP11-164023.1, Ubiquitin thioesterase OTU1, yod1, YOD1 OTU deubiquinating enzyme 1 homolog (S. cerevisiae)
Molecular Weight:	38.2 kDa

## Target Details

UniProt: [Q5VVQ6](#)

Pathways: [ER-Nucleus Signaling](#)

## Application Details

Application Notes: Optimal working dilution should be determined by the investigator.

Restrictions: For Research Use only

## Handling

Format: Lyophilized

Reconstitution: Centrifuge the vial at 10,000 rpm for 1 minute, reconstitute at 200 µg/mL in sterile distilled water by gentle pipetting 2-3 times, don't vortex

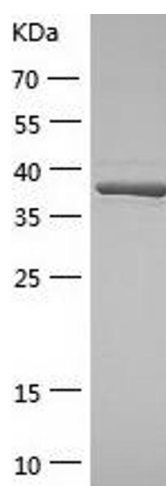
Buffer: Lyophilized from a 0.2 µm filtered solution in 10 mM Hepes, 500 mM NaCl with 5 % trehalose, pH 7.4

Storage: 4 °C, -20 °C

Storage Comment: -20°C for 12 months as lyophilized, 2-8°C for 1 month under sterile conditions after reconstitution

Expiry Date: 12 months

## Images



### Western Blotting

Image 1.