



[Go to Product page](#)

Datasheet for ABIN7125686

## LYN Protein (AA 15-224) (His-IF2DI Tag)

### 1 Image

#### Overview

Quantity:	50 µg
Target:	LYN
Protein Characteristics:	AA 15-224
Origin:	Human
Source:	Escherichia coli (E. coli)
Protein Type:	Recombinant
Purification tag / Conjugate:	This LYN protein is labelled with His-IF2DI Tag.
Application:	Western Blotting (WB), ELISA

#### Product Details

Purity:	Greater than 95 % by SDS-PAGE gel analyses
Sterility:	0.2 µm filtered

#### Target Details

Target:	LYN
Alternative Name:	LYN ( <a href="#">LYN Products</a> )
Background:	AA407514, EC 2.7.10.2, FLJ26625, Hck 2, JTK 8, JTK8, Lck/Yes related novel protein tyrosine kinase, LYN, LYN proto oncogene, Src family tyrosine kinase, LYN_HUMAN, ONCOGENE LYN, p53Lyn, p56Lyn, Tyrosine protein kinase LYN, Tyrosine-protein kinase Lyn
Molecular Weight:	44.8 kDa

## Target Details

UniProt: [P07948](#)

Pathways: [Fc-epsilon Receptor Signaling Pathway](#), [Hormone Transport](#), [Response to Growth Hormone Stimulus](#), [Cellular Response to Molecule of Bacterial Origin](#), [Regulation of Leukocyte Mediated Immunity](#), [Positive Regulation of Immune Effector Process](#), [CXCR4-mediated Signaling Events](#), [Thromboxane A2 Receptor Signaling](#), [Integrin Complex](#), [BCR Signaling](#)

## Application Details

Application Notes: Optimal working dilution should be determined by the investigator.

Restrictions: For Research Use only

## Handling

Format: Lyophilized

Reconstitution: Centrifuge the vial at 10,000 rpm for 1 minute, reconstitute at 200 µg/mL in sterile distilled water by gentle pipetting 2-3 times, don't vortex

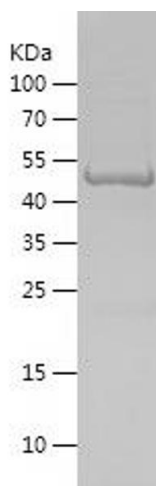
Buffer: Lyophilized from a 0.2 µm filtered solution in PBS with 5 % trehalose, pH 7.4

Storage: 4 °C, -20 °C

Storage Comment: -20°C for 12 months as lyophilized, 2-8°C for 1 month under sterile conditions after reconstitution

Expiry Date: 12 months

## Images



### Western Blotting

Image 1.