

Datasheet for ABIN7125761

**YTHDF2 Protein (AA 365-579) (His-IF2DI Tag)**[Go to Product page](#)**1** Image

## Overview

Quantity:	50 µg
Target:	YTHDF2
Protein Characteristics:	AA 365-579
Origin:	Human
Source:	Escherichia coli (E. coli)
Protein Type:	Recombinant
Purification tag / Conjugate:	This YTHDF2 protein is labelled with His-IF2DI Tag.
Application:	ELISA, Western Blotting (WB)

## Product Details

Purity:	Greater than 90 % by SDS-PAGE gel analyses
Sterility:	0.2 µm filtered

## Target Details

Target:	YTHDF2
Alternative Name:	YTHDF2 ( <a href="#">YTHDF2 Products</a> )
Background:	CLL associated antigen KW 14, HGRG8, NY REN 2, YTH domain family protein 2, YTH domain family, member 2, YTHDF2
Molecular Weight:	45.2 kDa
UniProt:	<a href="#">Q9Y5A9</a>

## Application Details

---

Application Notes: Optimal working dilution should be determined by the investigator.

Restrictions: For Research Use only

## Handling

---

Format: Lyophilized

Reconstitution: Centrifuge the vial at 10,000 rpm for 1 minute, reconstitute at 200 µg/mL in sterile distilled water by gentle pipetting 2-3 times, don't vortex

Buffer: Lyophilized from a 0.2 µm filtered solution in PBS with 5 % trehalose, pH 7.4

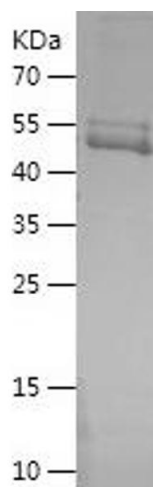
Storage: 4 °C, -20 °C

Storage Comment: -20°C for 12 months as lyophilized, 2-8°C for 1 month under sterile conditions after reconstitution

Expiry Date: 12 months

## Images

---



### Western Blotting

Image 1.