

Datasheet for ABIN7126105

anti-Mesothelin antibody (AA 273-407) (Biotin)[Go to Product page](#)

4 Images

Overview

Quantity:	0.5 mL
Target:	Mesothelin (MSLN)
Binding Specificity:	AA 273-407
Reactivity:	Human
Host:	Mouse
Clonality:	Monoclonal
Conjugate:	This Mesothelin antibody is conjugated to Biotin
Application:	Immunohistochemistry (Formalin-fixed Sections) (IHC (f))

Product Details

Immunogen:	Recombinant fragment (around aa 273-407) of human Mesothelin (MSLN) protein (exact sequence is proprietary)
Isotype:	IgG2b
Specificity:	Mesothelin is a 40 kDa glycosyl-phosphatidylinositol-anchored glycoprotein cleaved from a 69 kDa precursor protein. Mesothelin immunoreactivity is high in cancers of the ovary (serous papillary, endometrioid and undifferentiated) and pancreas, with less frequent staining seen in adenocarcinomas of the endometrium, lung and stomach/esophagus. Mesothelin is one of the most sensitive markers for mesothelioma.
Cross-Reactivity (Details):	Human, Mouse and Rat.
Purification:	Antibody purified from Bioreactor Concentrate by Protein A/G and conjugated to Biotin.

Target Details

Target:	Mesothelin (MSLN)
Alternative Name:	MSLN (MSLN Products)
Background:	CAK1, Megakaryocyte potentiating factor, Mesothelin, MSLN, SMR, SMRP, Mesothelin (Mesothelial Marker) Cellular localisation: Cell Surface and Secreted
Molecular Weight:	40kDa (Mature form), 69kDa (Precursor)
Gene ID:	10232, 408488
UniProt:	Q13421
Pathways:	EGFR Signaling Pathway , Positive Regulation of Peptide Hormone Secretion , Intracellular Steroid Hormone Receptor Signaling Pathway , Steroid Hormone Mediated Signaling Pathway , Carbohydrate Homeostasis , cAMP Metabolic Process , Regulation of G-Protein Coupled Receptor Protein Signaling , Positive Regulation of Endopeptidase Activity , Regulation of Carbohydrate Metabolic Process

Application Details

Application Notes:	Positive Control: CAPAN-2 or HeLa cells. Lung Mesothelioma. Known Application: Immunohistochemistry (Formalin-fixed) (2-4 µg/mL for 30 minutes at RT),(Staining of formalin-fixed tissues requires heating tissue sections in 10 mM Tris with 1 mM EDTA, pH 9.0, for 45 min at 95 °C followed by cooling at RT for 20 minutes),Optimal dilution for a specific application should be determined.
Restrictions:	For Research Use only

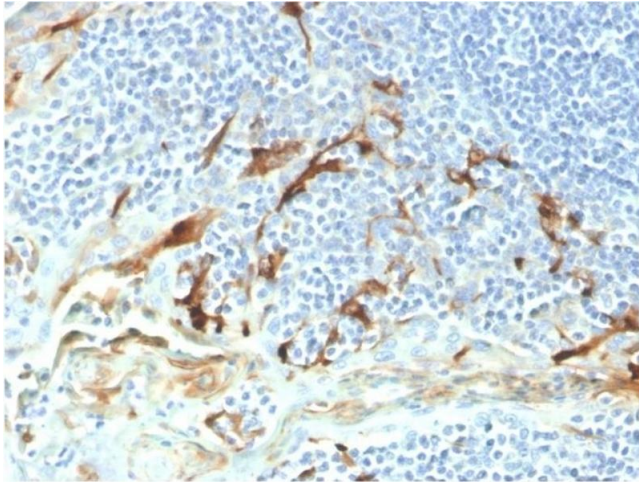
Handling

Concentration:	100 µg/mL
Buffer:	Antibody purified from Bioreactor Concentrate by Protein A/G and conjugated to Biotin. Prepared in 10mM PBS with 0.05% BSA and 0.05% azide.
Preservative:	Sodium azide
Precaution of Use:	This product contains Sodium azide: a POISONOUS AND HAZARDOUS SUBSTANCE which should be handled by trained staff only.
Storage:	4 °C,-80 °C
Storage Comment:	Antibody with azide - store at 2 to 8 °C. Antibody is stable for 24 months. Non-hazardous. Also

available WITHOUT BSA & azide at 1.0mg/ml.

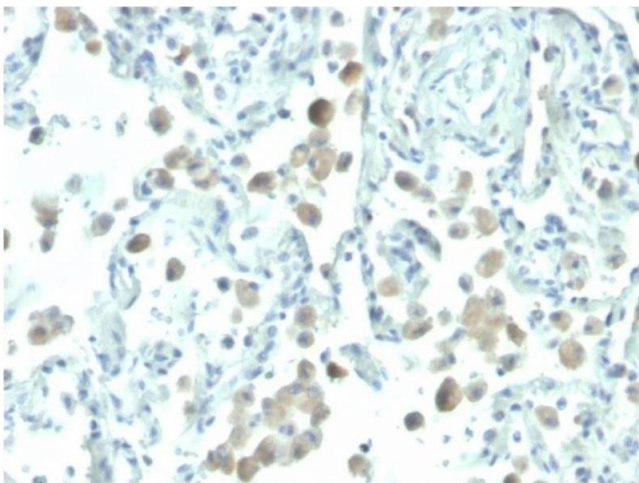
Expiry Date: 24 months

Images



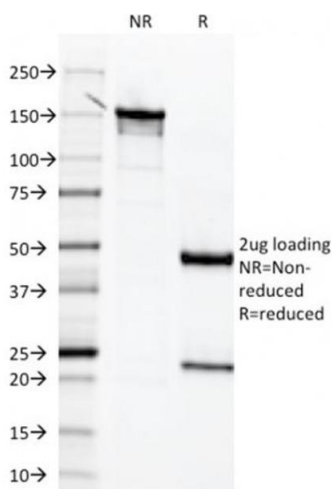
Immunohistochemistry

Image 1. Formalin-fixed, paraffin-embedded human endometrial carcinoma stained with Biotin-conjugated Mesothelin Mouse Monoclonal Antibody (MSLN/2131).



Immunohistochemistry

Image 2. Formalin-fixed, paraffin-embedded human lung stained with Biotin-conjugated Mesothelin Mouse Monoclonal Antibody (MSLN/2131).



Western Blotting

Image 3. SDS-PAGE Analysis Purified Mesothelin Mouse Monoclonal Antibody (MSLN/2131) (unconjugated). Confirmation of Integrity and Purity of the Antibody.

Please check the [product details page](#) for more images. Overall 4 images are available for ABIN7126105.