



[Go to Product page](#)

Datasheet for ABIN7127270

Recombinant anti-HIST1H4A antibody (acLys16)

4 Images

Overview

Quantity:	100 µL
Target:	HIST1H4A
Binding Specificity:	acLys16
Reactivity:	Human
Host:	Rabbit
Antibody Type:	Recombinant Antibody
Clonality:	Monoclonal
Conjugate:	This HIST1H4A antibody is un-conjugated
Application:	ELISA, Western Blotting (WB), Immunofluorescence (IF), Immunocytochemistry (ICC), Flow Cytometry (FACS)

Product Details

Immunogen:	A synthesized peptide
Clone:	2B8
Isotype:	IgG
Cross-Reactivity:	Human, Mouse
Purification:	Affinity-chromatography

Target Details

Target:	HIST1H4A
---------	----------

Target Details

Alternative Name: HIST1H4A ([HIST1H4A Products](#))

Background: Background: Core component of nucleosome. Nucleosomes wrap and compact DNA into chromatin, limiting DNA accessibility to the cellular machineries which require DNA as a template. Histones thereby play a central role in transcription regulation, DNA repair, DNA replication and chromosomal stability. DNA accessibility is regulated via a complex set of post-translational modifications of histones, also called histone code, and nucleosome remodeling.

Aliases: Histone H4, HIST1H4A, H4/A, H4FA, AND, HIST1H4B, H4/I, H4FI, AND, HIST1H4C, H4/G, H4FG, AND, HIST1H4D, H4/B, H4FB, AND, HIST1H4E, H4/J, H4FJ, AND, HIST1H4F, H4/C, H4FC, AND, HIST1H4H, H4/H, H4FH, AND, HIST1H4I, H4/M, H4FM, AND, HIST1H4J, H4/E, H4FE, AND, HIST1H4K, H4/D, H4FD, AND, HIST1H4L, H4/K, H4FK, AND, HIST2H4A, H4/N, H4F2, H4FN, HIST2H4, AND, HIST2H4B, H4/O, H4FO, AND, HIST4H4

UniProt: [P62805](#)

Application Details

Application Notes: Recommended dilution: WB:1:500-1:2000, ICC:1:50-1:500, IF:1:50-1:200,

Restrictions: For Research Use only

Handling

Format: Liquid

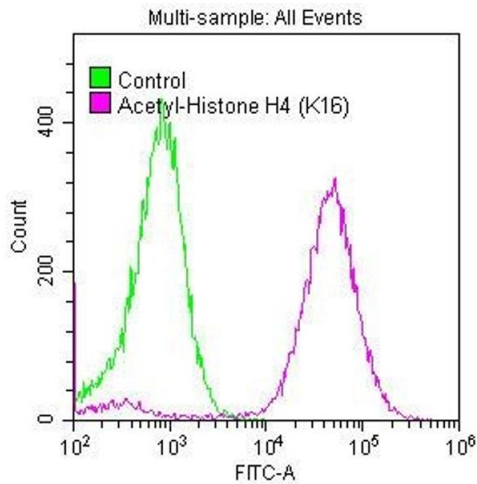
Buffer: Rabbit IgG in phosphate buffered saline, pH 7.4, 150 mM NaCl, 0.02 % sodium azide and 50 % glycerol.

Preservative: Sodium azide

Precaution of Use: This product contains Sodium azide: a POISONOUS AND HAZARDOUS SUBSTANCE which should be handled by trained staff only.

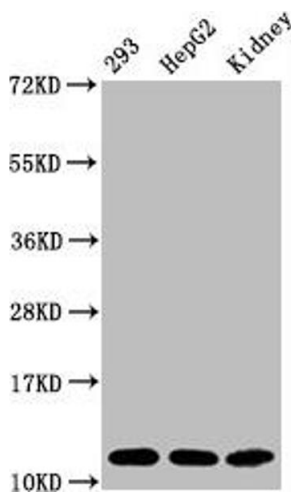
Storage: -20 °C,-80 °C

Storage Comment: Upon receipt, store at -20°C or -80°C. Avoid repeated freeze.



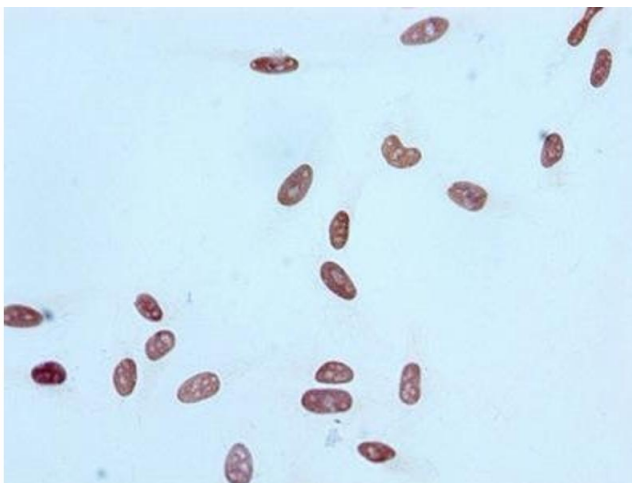
Flow Cytometry

Image 1. Overlay histogram showing HeLa cells stained with ABIN7127270 (red line) at 1:50. The cells were fixed with 70 % Ethylalcohol (18h) and then permeabilized with 0.3 % Triton X-100 for 2 min. The cells were then incubated in 1x PBS /10 % normal goat serum to block non-specific protein-protein interactions followed by primary antibody for 1 h at 4 °C. The secondary antibody used was FITC goat anti-rabbit IgG (H+L) at 1/200 dilution for 1 h at 4 °C. Control antibody (green line) was used under the same conditions. Acquisition of >10,000 events was performed.



Western Blotting

Image 2. Western Blot Positive WB detected in:293 whole cell lysate, HepG2 whole cell lysate, Mouse kidney tissue All lanes:Acetyl-Histone H4 (K16) antibody at 1.65 µg/mL Secondary Goat polyclonal to rabbit IgG at 1/50000 dilution Predicted band size: 11 KDa Observed band size: 11 KDa



Immunocytochemistry

Image 3. Immunocytochemistry analysis of ABIN7127270 diluted at 1:100 and staining in HeLa cells performed on a Leica Bond™ system. After dewaxing and hydration, antigen retrieval was mediated by high pressure in a citrate buffer (pH 6.0). Section was blocked with 10 % normal goat serum 30 min at RT. Then primary antibody (1 % BSA) was incubated at 4 °C overnight. The primary is detected by a biotinylated secondary antibody and visualized using an HRP conjugated SP system.

Please check the [product details page](#) for more images. Overall 4 images are available for ABIN7127270.