

Datasheet for ABIN7127272

Recombinant anti-Actin antibody

4 Images

[Go to Product page](#)

Overview

Quantity:	100 µL
Target:	Actin (ACTA1)
Reactivity:	Human
Host:	Rabbit
Antibody Type:	Recombinant Antibody
Clonality:	Monoclonal
Application:	Western Blotting (WB), ELISA, Immunohistochemistry (IHC), Immunofluorescence (IF), Flow Cytometry (FACS)

Product Details

Immunogen:	A synthesized peptide
Clone:	25E3
Isotype:	IgG
Cross-Reactivity:	Human
Purification:	Affinity-chromatography

Target Details

Target:	Actin (ACTA1)
Alternative Name:	ACTA1 (ACTA1 Products)
Background:	Background: Actins are highly conserved proteins that are involved in various types of cell

Target Details

	motility and are ubiquitously expressed in all eukaryotic cells.
	Aliases: Actin, alpha skeletal muscle, Alpha-actin-1, ACTA1, ACTA
UniProt:	P68133
Pathways:	Caspase Cascade in Apoptosis, Myometrial Relaxation and Contraction, Skeletal Muscle Fiber Development

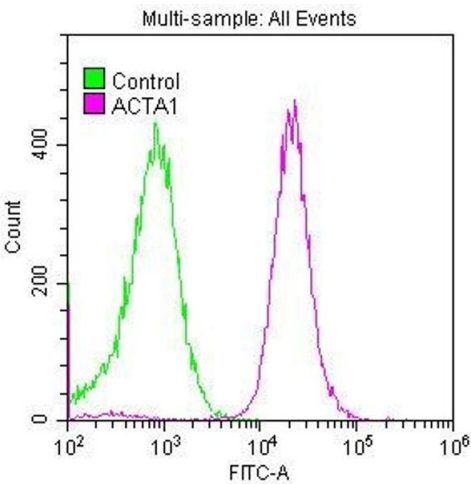
Application Details

Application Notes:	Recommended dilution: WB:1:500-1:5000, IHC:1:50-1:500, IF:1:30-1:200,
Restrictions:	For Research Use only

Handling

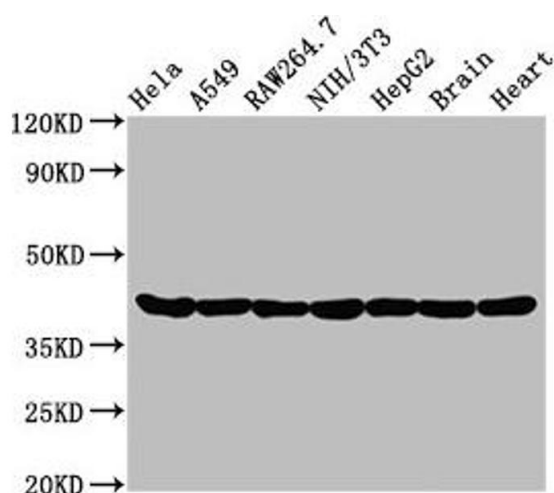
Format:	Liquid
Buffer:	Rabbit IgG in phosphate buffered saline, pH 7.4, 150 mM NaCl, 0.02 % sodium azide and 50 % glycerol.
Preservative:	Sodium azide
Precaution of Use:	This product contains Sodium azide: a POISONOUS AND HAZARDOUS SUBSTANCE which should be handled by trained staff only.
Storage:	-20 °C,-80 °C
Storage Comment:	Upon receipt, store at -20°C or -80°C. Avoid repeated freeze.

Images



Flow Cytometry

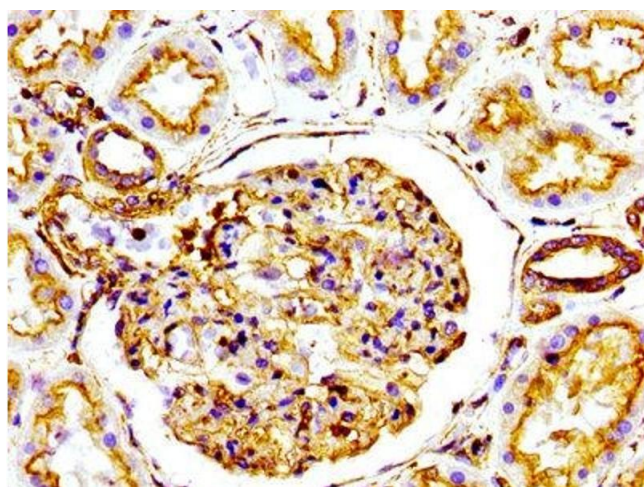
Image 1. Overlay histogram showing HeLa cells stained with ABIN7127272 (red line) at 1:50. The cells were fixed with 70 % Ethylalcohol (18h) and then permeabilized with 0.3 % Triton X-100 for 2 min. The cells were then incubated in 1x PBS /10 % normal goat serum to block non-specific protein-protein interactions followed by primary antibody for 1 h at 4 °C. The secondary antibody used was FITC goat anti-rabbit IgG (H+L) at 1/200 dilution for 1 h at 4 °C. Control antibody (green line) was used under the same conditions.



Acquisition of >10,000 events was performed.

Western Blotting

Image 2. Western Blot Positive WB detected in: HeLa whole cell lysate, A549 whole cell lysate, Raw264.7 whole cell lysate, NIH/3T3 whole cell lysate, HepG2 whole cell lysate, Rat brain tissue, Rat heart tissue All lanes: Actin antibody at 0.95 µg/mL Secondary Goat polyclonal to rabbit IgG at 1/50000 dilution Predicted band size: 42 KDa Observed band size: 42 KDa



Immunohistochemistry

Image 3. IHC image of ABIN7127272 diluted at 1:100 and staining in paraffin-embedded human kidney tissue performed on a Leica Bond™ system. After dewaxing and hydration, antigen retrieval was mediated by high pressure in a citrate buffer (pH 6.0). Section was blocked with 10 % normal goat serum 30 min at RT. Then primary antibody (1 % BSA) was incubated at 4 °C overnight. The primary is detected by a biotinylated secondary antibody and visualized using an HRP conjugated SP system.

Please check the [product details page](#) for more images. Overall 4 images are available for ABIN7127272.