

Datasheet for ABIN7127273

Recombinant anti-Bcl-2 antibody[Go to Product page](#)**4** Images

Overview

Quantity:	100 µL
Target:	Bcl-2 (BCL2)
Reactivity:	Human
Host:	Rabbit
Antibody Type:	Recombinant Antibody
Clonality:	Monoclonal
Conjugate:	This Bcl-2 antibody is un-conjugated
Application:	Western Blotting (WB), Immunohistochemistry (IHC), ELISA, Flow Cytometry (FACS)

Product Details

Immunogen:	A synthesized peptide
Clone:	2C6
Isotype:	IgG
Cross-Reactivity:	Human, Mouse, Rat
Purification:	Affinity-chromatography

Target Details

Target:	Bcl-2 (BCL2)
Alternative Name:	BCL2 (BCL2 Products)
Background:	Background: Suppresses apoptosis in a variety of cell systems including factor-dependent

Target Details

lymphohematopoietic and neural cells. Regulates cell death by controlling the mitochondrial membrane permeability. Appears to function in a feedback loop system with caspases. Inhibits caspase activity either by preventing the release of cytochrome c from the mitochondria and/or by binding to the apoptosis-activating factor (APAF-1). May attenuate inflammation by impairing NLRP1-inflammasome activation, hence CASP1 activation and IL1B release (PubMed:17418785).

Aliases: Apoptosis regulator Bcl-2, BCL2

UniProt: [P10415](#)

Pathways: [MAPK Signaling](#), [PI3K-Akt Signaling](#), [Apoptosis](#), [Caspase Cascade in Apoptosis](#), [Regulation of Muscle Cell Differentiation](#), [Cell-Cell Junction Organization](#), [Skeletal Muscle Fiber Development](#), [Autophagy](#), [Smooth Muscle Cell Migration](#), [Negative Regulation of intrinsic apoptotic Signaling](#)

Application Details

Application Notes: Recommended dilution: WB:1:500-1:5000, IHC:1:50-1:500,

Restrictions: For Research Use only

Handling

Format: Liquid

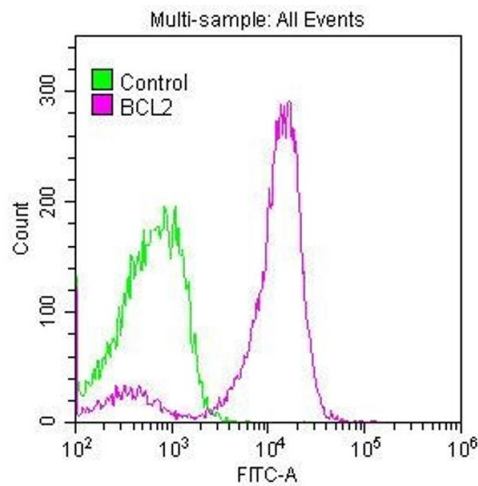
Buffer: Rabbit IgG in phosphate buffered saline, pH 7.4, 150 mM NaCl, 0.02 % sodium azide and 50 % glycerol.

Preservative: Sodium azide

Precaution of Use: This product contains Sodium azide: a POISONOUS AND HAZARDOUS SUBSTANCE which should be handled by trained staff only.

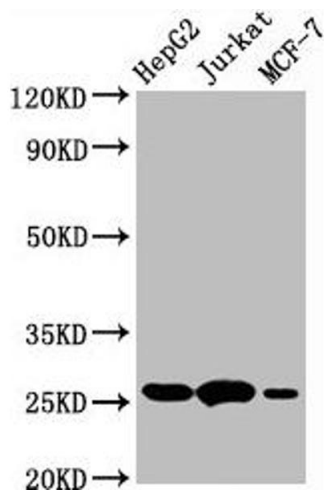
Storage: -20 °C,-80 °C

Storage Comment: Upon receipt, store at -20°C or -80°C. Avoid repeated freeze.



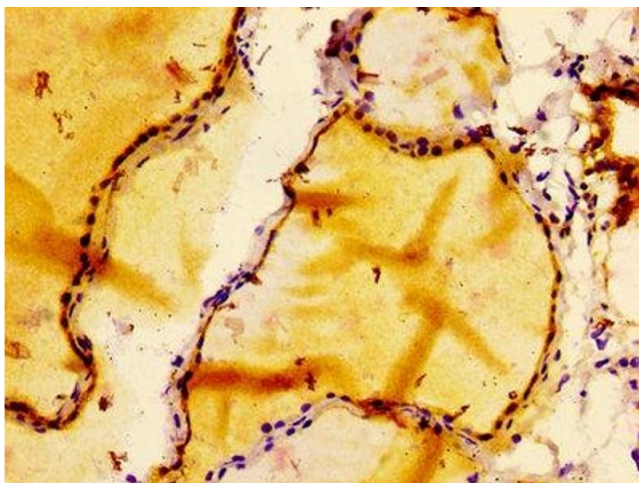
Flow Cytometry

Image 1. Overlay histogram showing Jurkat cells stained with ABIN7127273 (red line) at 1:50. The cells were fixed with 70 % Ethylalcohol (18h) and then permeabilized with 0.3 % Triton X-100 for 2 min. The cells were then incubated in 1x PBS /10 % normal goat serum to block non-specific protein-protein interactions followed by primary antibody for 1 h at 4 °C. The secondary antibody used was FITC goat anti-rabbit IgG (H+L) at 1/200 dilution for 1 h at 4 °C. Control antibody (green line) was used under the same conditions. Acquisition of >10,000 events was performed.



Western Blotting

Image 2. Western Blot Positive WB detected in: HepG2 whole cell lysate, Jurkat whole cell lysate, MCF-7 whole cell lysate. All lanes: BCL2 antibody at 1µg/ml. Secondary Goat polyclonal to rabbit IgG at 1/50000 dilution. Predicted band size: 26 KDa. Observed band size: 26 KDa.



Immunohistochemistry

Image 3. IHC image of ABIN7127273 diluted at 1:100 and staining in paraffin-embedded human thyroid tissue performed on a Leica Bond™ system. After dewaxing and hydration, antigen retrieval was mediated by high pressure in a citrate buffer (pH 6.0). Section was blocked with 10% normal goat serum 30min at RT. Then primary antibody (1% BSA) was incubated at 4°C overnight. The primary is detected by a biotinylated secondary antibody and visualized using an HRP conjugated SP system.

Please check the [product details page](#) for more images. Overall 4 images are available for ABIN7127273.