



[Go to Product page](#)

Datasheet for ABIN7127277

Recombinant anti-CD21 antibody

5 Images

Overview

Quantity:	100 µL
Target:	CD21 (CR2)
Reactivity:	Human
Host:	Rabbit
Antibody Type:	Recombinant Antibody
Clonality:	Monoclonal
Conjugate:	This CD21 antibody is un-conjugated
Application:	Flow Cytometry (FACS), Immunohistochemistry (IHC), Western Blotting (WB), ELISA, Immunofluorescence (IF)

Product Details

Immunogen:	A synthesized peptide
Clone:	16F10
Isotype:	IgG
Cross-Reactivity:	Human
Purification:	Affinity-chromatography

Target Details

Target:	CD21 (CR2)
Alternative Name:	CR2 (CR2 Products)

Target Details

Background:	Background: Receptor for complement C3Dd, for the Epstein-Barr virus on human B-cells and T-cells and for HNRPU. Participates in B lymphocytes activation. Aliases: Complement receptor type 2, Cr2, Complement C3d receptor, Epstein-Barr virus receptor, EBV receptor, CD21, CR2, C3DR
UniProt:	P20023
Pathways:	Complement System

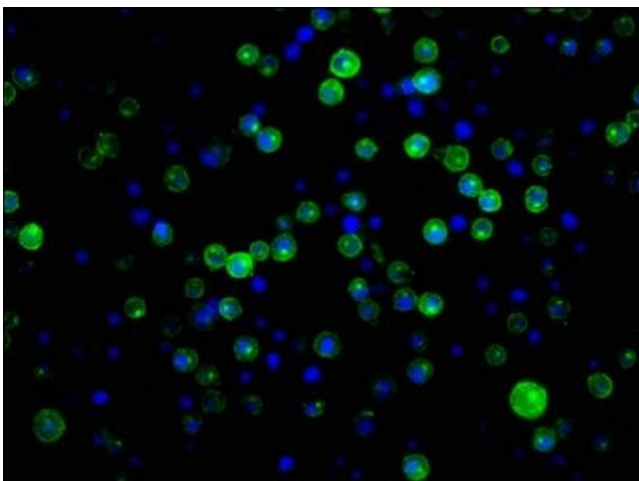
Application Details

Application Notes:	Recommended dilution: WB:1:500-1:5000, IHC:1:50-1:500, IF:1:30-1:200,
Restrictions:	For Research Use only

Handling

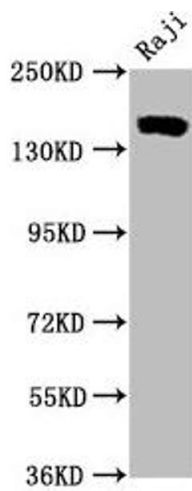
Format:	Liquid
Buffer:	Rabbit IgG in phosphate buffered saline, pH 7.4, 150 mM NaCl, 0.02 % sodium azide and 50 % glycerol.
Preservative:	Sodium azide
Precaution of Use:	This product contains Sodium azide: a POISONOUS AND HAZARDOUS SUBSTANCE which should be handled by trained staff only.
Storage:	-20 °C,-80 °C
Storage Comment:	Upon receipt, store at -20°C or -80°C. Avoid repeated freeze.

Images



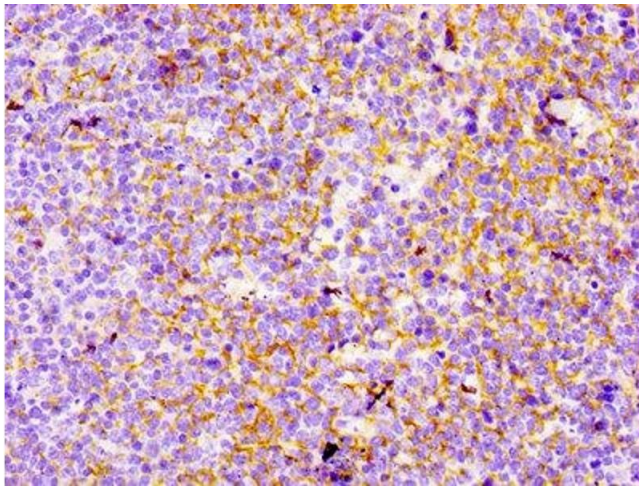
Immunofluorescence

Image 1. Immunofluorescence staining of Raji cells with ABIN7127277 at 1:34, counter-stained with DAPI. The cells were fixed in 4 % formaldehyde, permeabilized using 0.2 % Triton X-100 and blocked in 10 % normal Goat Serum. The cells were then incubated with the antibody overnight at 4 °C. The secondary antibody was Alexa Fluor 488-conjugated AffiniPure Goat Anti-Rabbit IgG (H+L).



Western Blotting

Image 2. Western Blot Positive WB detected in Raji whole cell lysate All lanes CD21 antibody at 0.55 µg/mL Secondary Goat polyclonal to rabbit IgG at 1/50000 dilution Predicted band size: 155 KDa Observed band size: 155 KDa



Immunohistochemistry

Image 3. IHC image of CY5710 diluted at 1:100 and staining in paraffin-embedded human tonsil tissue performed on a Leica Bond™ system. After dewaxing and hydration, antigen retrieval was mediated by high pressure in a citrate buffer (pH 6.0). Section was blocked with 10 % normal goat serum 30 min at RT. Then primary antibody (1 % BSA) was incubated at 4 °C overnight. The primary is detected by a biotinylated secondary antibody and visualized using an HRP conjugated SP system.

Please check the [product details page](#) for more images. Overall 5 images are available for ABIN7127277.