

Datasheet for ABIN7127293

Recombinant anti-HIST1H2AB antibody**2** Images[Go to Product page](#)

Overview

Quantity:	100 µL
Target:	HIST1H2AB
Reactivity:	Human
Host:	Rabbit
Antibody Type:	Recombinant Antibody
Clonality:	Monoclonal
Conjugate:	This HIST1H2AB antibody is un-conjugated
Application:	ELISA, Western Blotting (WB), Immunofluorescence (IF)

Product Details

Immunogen:	A synthesized peptide
Clone:	1H12
Isotype:	IgG
Cross-Reactivity:	Human
Purification:	Affinity-chromatography

Target Details

Target:	HIST1H2AB
Alternative Name:	HIST1H2AB (HIST1H2AB Products)
Background:	Background: Core component of nucleosome. Nucleosomes wrap and compact DNA into

Target Details

chromatin, limiting DNA accessibility to the cellular machineries which require DNA as a template. Histones thereby play a central role in transcription regulation, DNA repair, DNA replication and chromosomal stability. DNA accessibility is regulated via a complex set of post-translational modifications of histones, also called histone code, and nucleosome remodeling. Aliases: Histone H2A type 1-B/E, Histone H2A.2, Histone H2A/a, Histone H2A/m, HIST1H2AB, H2AFM, AND, HIST1H2AE, H2AFA

UniProt: [P04908](#)

Pathways: [Telomere Maintenance](#)

Application Details

Application Notes: Recommended dilution: WB:1:500-1:5000, IF:1:30-1:200,

Restrictions: For Research Use only

Handling

Format: Liquid

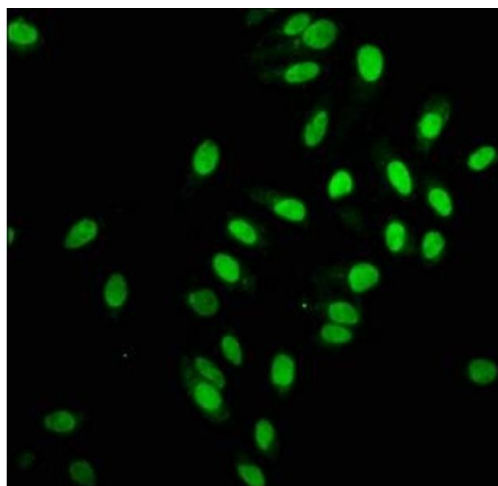
Buffer: Rabbit IgG in phosphate buffered saline, pH 7.4, 150 mM NaCl, 0.02 % sodium azide and 50 % glycerol.

Preservative: Sodium azide

Precaution of Use: This product contains Sodium azide: a POISONOUS AND HAZARDOUS SUBSTANCE which should be handled by trained staff only.

Storage: -20 °C, -80 °C

Storage Comment: Upon receipt, store at -20°C or -80°C. Avoid repeated freeze.



Immunofluorescence

Image 1. Immunofluorescence staining of HeLa cells with ABIN7127293 at 1:168, counter-stained with DAPI. The cells were fixed in 4 % formaldehyde, permeabilized using 0.2 % Triton X-100 and blocked in 10 % normal Goat Serum. The cells were then incubated with the antibody overnight at 4 °C. The secondary antibody was Alexa Fluor 488-conjugated AffiniPure Goat Anti-Rabbit IgG (H+L).



Western Blotting

Image 2. Western Blot Positive WB detected in HepG2 whole cell lysate All lanes Histone H2A type 1-B/E antibody at 2.7 µg/mL Secondary Goat polyclonal to rabbit IgG at 1/50000 dilution Predicted band size: 13 kDa Observed band size: 13 kDa