

Datasheet for ABIN7127316

**Recombinant anti-TPBG antibody****2** Images[Go to Product page](#)

## Overview

|                |  |
|----------------|--|
| Quantity:      | 100 µL   |
| Target:        | TPBG   |
| Reactivity:    | Human  |
| Host:          | Rabbit   |
| Antibody Type: | Recombinant Antibody                                     |
| Clonality:     | Monoclonal   |
| Conjugate:     | This TPBG antibody is un-conjugated                      |
| Application:   | Western Blotting (WB), ELISA, Immunohistochemistry (IHC) |

## Product Details

|                   |  |
|-------------------|--|
| Immunogen:        | A synthesized peptide derived from human 5T4 |
| Clone:            | 6E9  |
| Isotype:          | IgG  |
| Cross-Reactivity: | Human, Mouse                                 |
| Purification:     | Affinity-chromatography                      |

## Target Details

|                   |  |
|-------------------|--|
| Target:           | TPBG   |
| Alternative Name: | TPBG ( <a href="#">TPBG Products</a> )   |
| Background:       | Background: May function as an inhibitor of Wnt/beta-catenin signaling by indirectly interacting |

## Target Details

with LRP6 and blocking Wnt3a-dependent LRP6 internalization.

Aliases: Trophoblast glycoprotein (5T4 oncofetal antigen) (5T4 oncofetal trophoblast glycoprotein) (5T4 oncotrophoblast glycoprotein) (M6P1) (Wnt-activated inhibitory factor 1) (WAIF1), TPBG, 5T4

UniProt: [Q13641](#)

## Application Details

Application Notes: Recommended dilution: WB:1:500-1:5000, IHC:1:50-1:200,

Restrictions: For Research Use only

## Handling

Format: Liquid

Buffer: Rabbit IgG in phosphate buffered saline, pH 7.4, 150 mM NaCl, 0.02 % sodium azide and 50 % glycerol.

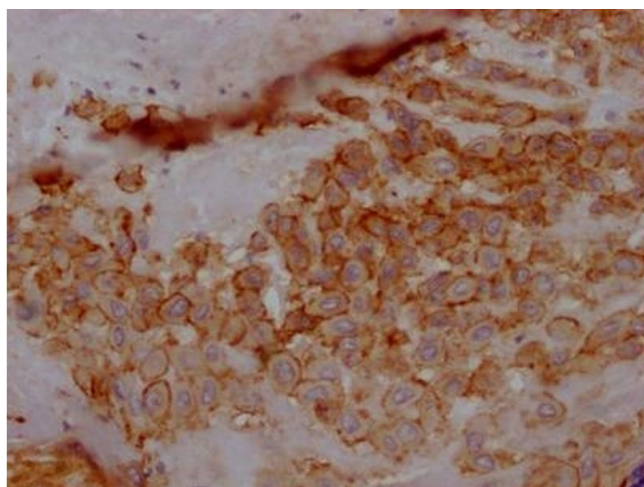
Preservative: Sodium azide

Precaution of Use: This product contains Sodium azide: a POISONOUS AND HAZARDOUS SUBSTANCE which should be handled by trained staff only.

Storage: -20 °C,-80 °C

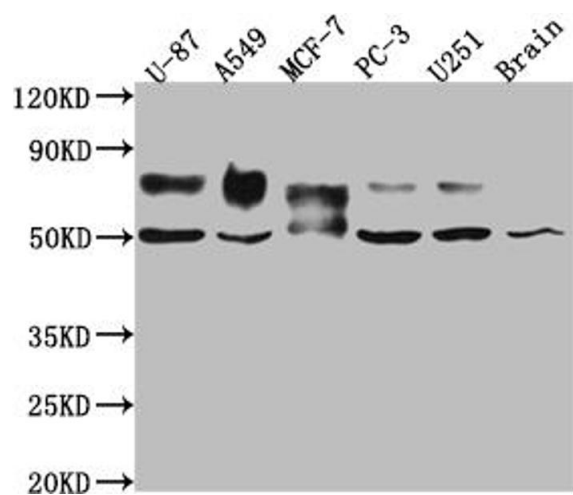
Storage Comment: Upon receipt, store at -20°C or -80°C. Avoid repeated freeze.

## Images



### Immunohistochemistry

**Image 1.** IHC image of ABIN7127316 diluted at 1:100 and staining in paraffin-embedded human placenta tissue performed on a Leica Bond™ system. After dewaxing and hydration, antigen retrieval was mediated by high pressure in a citrate buffer (pH 6.0). Section was blocked with 10 % normal goat serum 30 min at RT. Then primary antibody (1 % BSA) was incubated at 4 °C overnight. The primary is detected by a Goat anti-rabbit IgG polymer labeled by HRP and visualized using 0.05 % DAB.



Western Blotting

**Image 2.** Western Blot Positive WB detected in: U-87 whole cell lysate, A549 whole cell lysate, MCF-7 whole cell lysate, PC-3 whole cell lysate, U-251 whole cell lysate, Mouse Brain whole cell lysate All lanes: 5T4 antibody at 1:1000 Secondary Goat polyclonal to rabbit IgG at 1/50000 dilution Predicted band size: 47 kDa Observed band size: 50, 80 kDa