

Datasheet for ABIN7127318

Recombinant anti-Angiotensin I Converting Enzyme 1 antibody[Go to Product page](#)**2** Images

Overview

Quantity:	100 µL
Target:	Angiotensin I Converting Enzyme 1 (ACE)
Reactivity:	Human
Host:	Rabbit
Antibody Type:	Recombinant Antibody
Clonality:	Monoclonal
Conjugate:	This Angiotensin I Converting Enzyme 1 antibody is un-conjugated
Application:	ELISA, Immunohistochemistry (IHC)

Product Details

Immunogen:	A synthesized peptide derived from human ACE1
Clone:	2H8
Isotype:	IgG
Cross-Reactivity:	Human
Purification:	Affinity-chromatography

Target Details

Target:	Angiotensin I Converting Enzyme 1 (ACE)
Alternative Name:	ACE (ACE Products)
Background:	Background: Converts angiotensin I to angiotensin II by release of the terminal His-Leu, this

Target Details

results in an increase of the vasoconstrictor activity of angiotensin. Also able to inactivate bradykinin, a potent vasodilator. Has also a glycosidase activity which releases GPI-anchored proteins from the membrane by cleaving the mannose linkage in the GPI moiety.

Aliases: Angiotensin-converting enzyme (ACE) (EC 3.2.1.-) (EC 3.4.15.1) (Dipeptidyl carboxypeptidase I) (Kininase II) (CD antigen CD143) [Cleaved into: Angiotensin-converting enzyme, soluble form], ACE, DCP DCP1

UniProt: [P12821](#)

Pathways: [ACE Inhibitor Pathway](#), [Peptide Hormone Metabolism](#), [Regulation of Systemic Arterial Blood Pressure by Hormones](#), [Feeding Behaviour](#), [Smooth Muscle Cell Migration](#)

Application Details

Application Notes: Recommended dilution: IHC:1:50-1:200,

Restrictions: For Research Use only

Handling

Format: Liquid

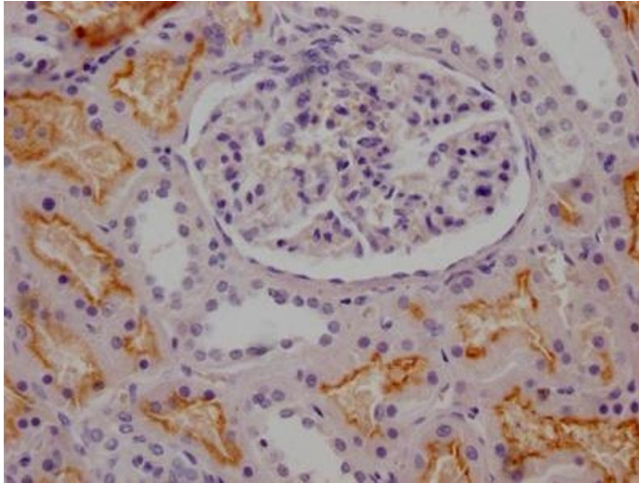
Buffer: Rabbit IgG in phosphate buffered saline, pH 7.4, 150 mM NaCl, 0.02 % sodium azide and 50 % glycerol.

Preservative: Sodium azide

Precaution of Use: This product contains Sodium azide: a POISONOUS AND HAZARDOUS SUBSTANCE which should be handled by trained staff only.

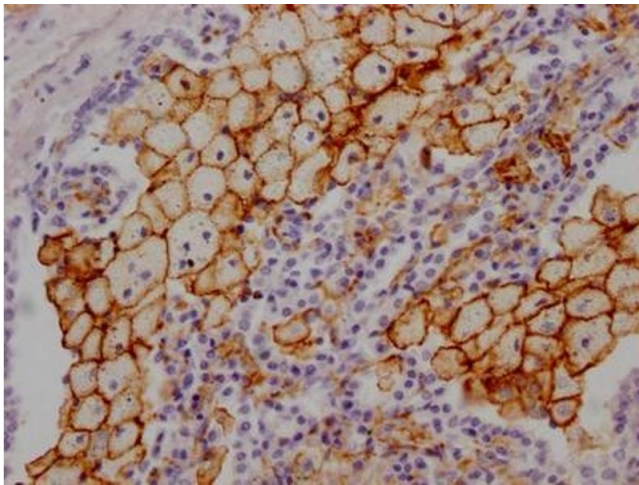
Storage: -20 °C,-80 °C

Storage Comment: Upon receipt, store at -20°C or -80°C. Avoid repeated freeze.



Immunohistochemistry

Image 1. IHC image of ABIN7127318 diluted at 1:100 and staining in paraffin-embedded human kidney tissue performed on a Leica Bond™ system. After dewaxing and hydration, antigen retrieval was mediated by high pressure in a citrate buffer (pH 6.0). Section was blocked with 10 % normal goat serum 30 min at RT. Then primary antibody (1 % BSA) was incubated at 4 °C overnight. The primary is detected by a Goat anti-rabbit IgG polymer labeled by HRP and visualized using 0.05 % DAB.



Immunohistochemistry

Image 2. IHC image of ABIN7127318 diluted at 1:100 and staining in paraffin-embedded human lung tissue performed on a Leica Bond™ system. After dewaxing and hydration, antigen retrieval was mediated by high pressure in a citrate buffer (pH 6.0). Section was blocked with 10 % normal goat serum 30 min at RT. Then primary antibody (1 % BSA) was incubated at 4 °C overnight. The primary is detected by a Goat anti-rabbit IgG polymer labeled by HRP and visualized using 0.05 % DAB.