



[Go to Product page](#)

Datasheet for ABIN7127333

Recombinant anti-ALDH2 antibody

2 Images

Overview

Quantity:	100 µL
Target:	ALDH2
Reactivity:	Human
Host:	Rabbit
Antibody Type:	Recombinant Antibody
Clonality:	Monoclonal
Conjugate:	This ALDH2 antibody is un-conjugated
Application:	Western Blotting (WB), Immunohistochemistry (IHC), ELISA

Product Details

Immunogen:	A synthesized peptide derived from human ALDH2
Clone:	3F10
Isotype:	IgG
Cross-Reactivity:	Human, Mouse, Rat
Purification:	Affinity-chromatography

Target Details

Target:	ALDH2
Alternative Name:	ALDH2 (ALDH2 Products)
Background:	Background: extracellular exosome, mitochondrial matrix, aldehyde dehydrogenase (NAD)

Target Details

activity, aldehyde dehydrogenase [NAD(P)+] activity, electron carrier activity, NAD binding, alcohol metabolic process, carbohydrate metabolic process, ethanol oxidation
Aliases: Aldehyde dehydrogenase, mitochondrial (EC 1.2.1.3) (ALDH class 2) (ALDH-E2) (ALDHI), ALDH2, ALDM

UniProt: [P05091](#)

Application Details

Application Notes: Recommended dilution: WB:1:500-1:5000, IHC:1:50-1:200,

Restrictions: For Research Use only

Handling

Format: Liquid

Buffer: Rabbit IgG in phosphate buffered saline, pH 7.4, 150 mM NaCl, 0.02 % sodium azide and 50 % glycerol.

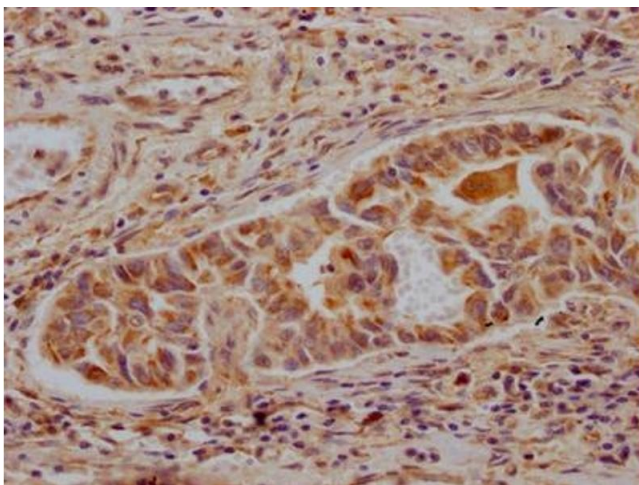
Preservative: Sodium azide

Precaution of Use: This product contains Sodium azide: a POISONOUS AND HAZARDOUS SUBSTANCE which should be handled by trained staff only.

Storage: -20 °C,-80 °C

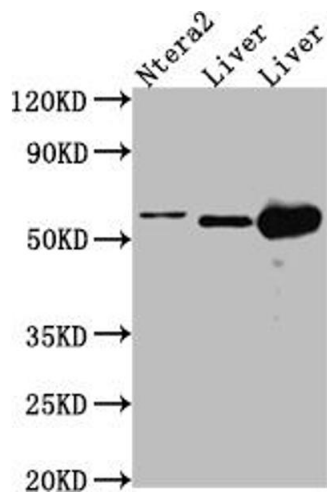
Storage Comment: Upon receipt, store at -20°C or -80°C. Avoid repeated freeze.

Images



Immunohistochemistry

Image 1. IHC image of ABIN7127333 diluted at 1:100 and staining in paraffin-embedded human liver cancer performed on a Leica Bond™ system. After dewaxing and hydration, antigen retrieval was mediated by high pressure in a citrate buffer (pH 6.0). Section was blocked with 10 % normal goat serum 30 min at RT. Then primary antibody (1 % BSA) was incubated at 4 °C overnight. The primary is detected by a Goat anti-rabbit IgG polymer labeled by HRP and visualized using 0.05 % DAB.



Western Blotting

Image 2. Western Blot Positive WB detected in: Ntera-2 whole cell lysate, Mouse Liver whole cell lysate, Rat Liver cell lysate All lanes: ALDH2 antibody at 1:1000 Secondary Goat polyclonal to rabbit IgG at 1/50000 dilution Predicted band size: 57, 51 kDa Observed band size: 57 kDa