

Datasheet for ABIN7127334

**Recombinant anti-ALDOA antibody****3** Images[Go to Product page](#)

## Overview

Quantity:	100 µL
Target:	ALDOA
Reactivity:	Human
Host:	Rabbit
Antibody Type:	Recombinant Antibody
Clonality:	Monoclonal
Conjugate:	This ALDOA antibody is un-conjugated
Application:	Western Blotting (WB), ELISA, Immunohistochemistry (IHC), Immunofluorescence (IF)

## Product Details

Immunogen:	A synthesized peptide derived from human Aldolase
Clone:	7D8
Isotype:	IgG
Cross-Reactivity:	Human, Mouse, Rat
Purification:	Affinity-chromatography

## Target Details

Target:	ALDOA
Alternative Name:	ALDOA ( <a href="#">ALDOA Products</a> )
Background:	Background: Plays a key role in glycolysis and gluconeogenesis. In addition, may also function

## Target Details

as scaffolding protein (By similarity).

Aliases: Fructose-bisphosphate aldolase A (EC 4.1.2.13) (Lung cancer antigen NY-LU-1) (Muscle-type aldolase), ALDOA, ALDA

UniProt: [P04075](#)

Pathways: [Ribonucleoside Biosynthetic Process](#)

## Application Details

Application Notes: Recommended dilution: WB:1:500-1:5000, IHC:1:50-1:200, IF:1:20-1:200,

Restrictions: For Research Use only

## Handling

Format: Liquid

Buffer: Rabbit IgG in phosphate buffered saline, pH 7.4, 150 mM NaCl, 0.02 % sodium azide and 50 % glycerol.

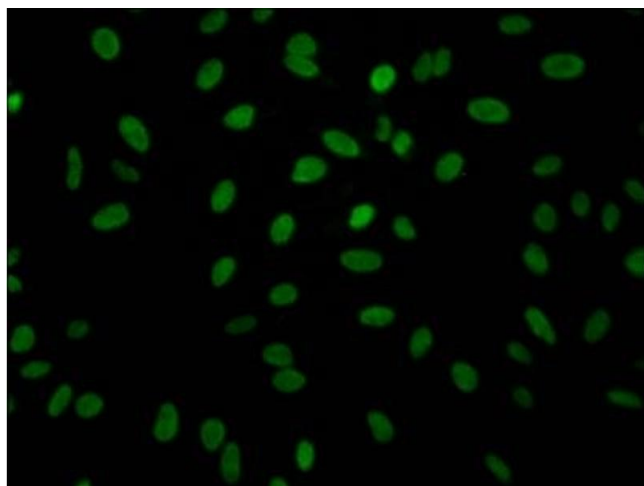
Preservative: Sodium azide

Precaution of Use: This product contains Sodium azide: a POISONOUS AND HAZARDOUS SUBSTANCE which should be handled by trained staff only.

Storage: -20 °C,-80 °C

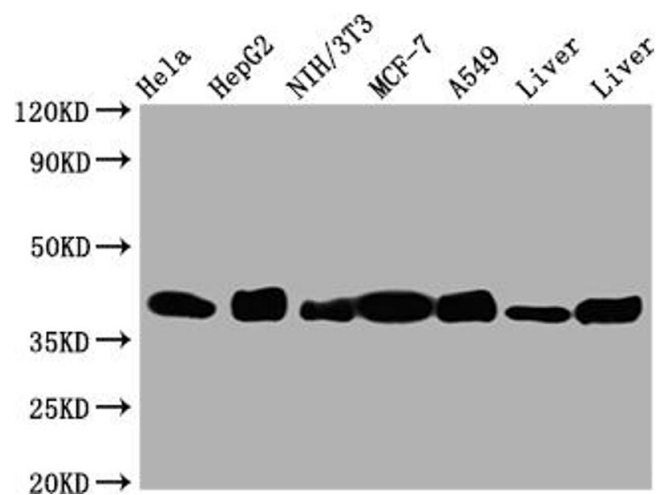
Storage Comment: Upon receipt, store at -20°C or -80°C. Avoid repeated freeze.

## Images



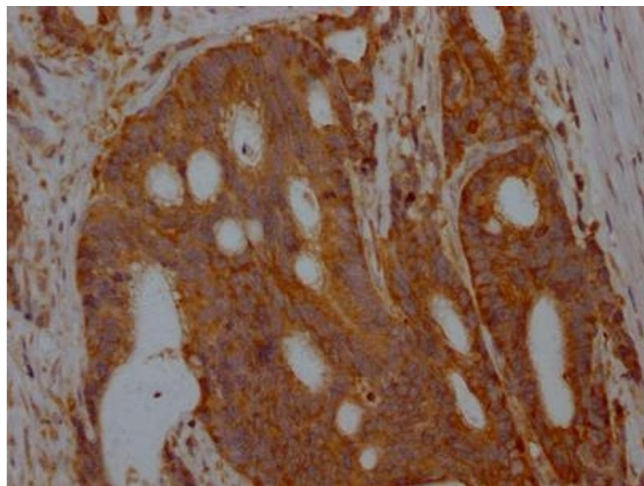
### Immunofluorescence

**Image 1.** Immunofluorescence staining of Hela Cells with ABIN7127334 at 1:50, counter-stained with DAPI. The cells were fixed in 4 % formaldehyde, permeated by 0.2 % TritonX-100, and blocked in 10 % normal Goat Serum. The cells were then incubated with the antibody overnight at 4 °C. Nuclear DNA was labeled in blue with DAPI. The secondary antibody was FITC-conjugated AffiniPure Goat Anti-Rabbit IgG (H+L).



#### Western Blotting

**Image 2.** Western Blot Positive WB detected in: HeLa whole cell lysate, HepG2 whole cell lysate, NIH/3T3 whole cell lysate, A549 whole cell lysate, Mouse Liver whole cell lysate, Rat Liver whole cell lysate All lanes: Aldolase antibody at 1:1000 Secondary Goat polyclonal to rabbit IgG at 1/50000 dilution Predicted band size: 40, 46 kDa Observed band size: 40 kDa



#### Immunohistochemistry

**Image 3.** IHC image of ABIN7127334 diluted at 1:100 and staining in paraffin-embedded human colon cancer performed on a Leica Bond™ system. After dewaxing and hydration, antigen retrieval was mediated by high pressure in a citrate buffer (pH 6.0). Section was blocked with 10 % normal goat serum 30 min at RT. Then primary antibody (1 % BSA) was incubated at 4 °C overnight. The primary is detected by a Goat anti-rabbit IgG polymer labeled by HRP and visualized using 0.05 % DAB.