

Datasheet for ABIN7127362

Recombinant anti-BAK1 antibody

5 Images

[Go to Product page](#)

Overview

Quantity:	100 µL
Target:	BAK1
Reactivity:	Human
Host:	Rabbit
Antibody Type:	Recombinant Antibody
Clonality:	Monoclonal
Conjugate:	This BAK1 antibody is un-conjugated
Application:	Western Blotting (WB), Immunohistochemistry (IHC), ELISA, Immunoprecipitation (IP), Flow Cytometry (FACS)

Product Details

Immunogen:	A synthesized peptide derived from human BAK1
Clone:	8D1
Isotype:	IgG
Cross-Reactivity:	Human
Purification:	Affinity-chromatography

Target Details

Target:	BAK1
Alternative Name:	BAK1 (BAK1 Products)

Target Details

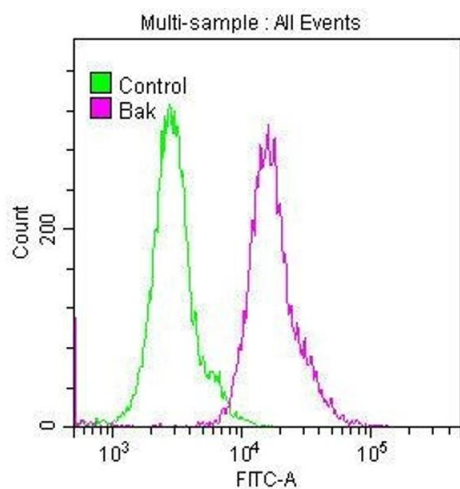
Background:	<p>Background: Plays a role in the mitochondrial apoptotic process. Upon arrival of cell death signals, promotes mitochondrial outer membrane (MOM) permeabilization by oligomerizing to form pores within the MOM. This releases apoptogenic factors into the cytosol, including cytochrome c, promoting the activation of caspase 9 which in turn processes and activates the effector caspases.</p> <p>Aliases: Bcl-2 homologous antagonist/killer, Apoptosis regulator BAK, Bcl-2-like protein 7, Bcl2-L-7, BAK1, BAK, BCL2L7, CDN1</p>
UniProt:	Q16611
Pathways:	Apoptosis , Steroid Hormone Mediated Signaling Pathway , ER-Nucleus Signaling , Positive Regulation of Endopeptidase Activity , Unfolded Protein Response

Application Details

Application Notes:	Recommended dilution: WB:1:500-1:5000, IHC:1:50-1:200, IP:1:200-1:1000,
Restrictions:	For Research Use only

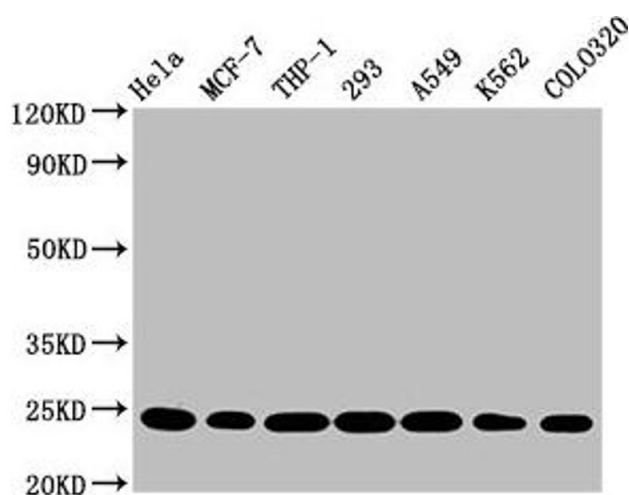
Handling

Format:	Liquid
Buffer:	Rabbit IgG in phosphate buffered saline , pH 7.4, 150 mM NaCl, 0.02 % sodium azide and 50 % glycerol.
Preservative:	Sodium azide
Precaution of Use:	This product contains Sodium azide: a POISONOUS AND HAZARDOUS SUBSTANCE which should be handled by trained staff only.
Storage:	-20 °C,-80 °C
Storage Comment:	Upon receipt, store at -20°C or -80°C. Avoid repeated freeze.



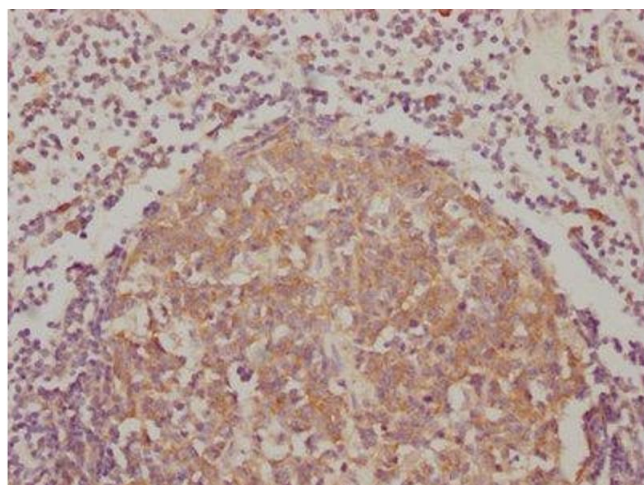
Flow Cytometry

Image 1. Overlay histogram showing HeLa cells stained with ABIN7127362 (red line) at 1:50. The cells were fixed with 70 % Ethylalcohol (18h) and then permeabilized with 0.3 % Triton X-100 for 2 min. The cells were then incubated in 1x PBS /10 % normal goat serum to block non-specific protein-protein interactions followed by primary antibody for 1 h at 4 °C. The secondary antibody used was FITC goat anti-rabbit IgG (H+L) at 1/200 dilution for 1 h at 4 °C. Control antibody (green line) was used under the same conditions. Acquisition of >10,000 events was performed.



Western Blotting

Image 2. Western Blot Positive WB detected in: HeLa whole cell lysate, MCF-7 whole cell lysate, THP-1 whole cell lysate, 293 whole cell lysate, A549 whole cell lysate, K562 whole cell lysate, Colo320 whole cell lysate All lanes: BAK1 antibody at 0.9 µg/mL Secondary Goat polyclonal to rabbit IgG at 1/50000 dilution Predicted band size: 24, 17 KDa Observed band size: 24 KDa



Immunohistochemistry

Image 3. IHC image of ABIN7127362 diluted at 1:90 and staining in paraffin-embedded human lymph node tissue performed on a Leica Bond™ system. After dewaxing and hydration, antigen retrieval was mediated by high pressure in a citrate buffer (pH 6.0). Section was blocked with 10 % normal goat serum 30 min at RT. Then primary antibody (1 % BSA) was incubated at 4 °C overnight. The primary is detected by a biotinylated secondary antibody and visualized using an HRP conjugated SP system.

Please check the [product details page](#) for more images. Overall 5 images are available for ABIN7127362.