



[Go to Product page](#)

Datasheet for ABIN7127374

Recombinant anti-BUB1B antibody

2 Images

Overview

Quantity:	100 µL
Target:	BUB1B
Reactivity:	Human
Host:	Rabbit
Antibody Type:	Recombinant Antibody
Clonality:	Monoclonal
Conjugate:	This BUB1B antibody is un-conjugated
Application:	Western Blotting (WB), ELISA, Flow Cytometry (FACS)

Product Details

Immunogen:	A synthesized peptide derived from human BubR1
Clone:	7H4
Isotype:	IgG
Cross-Reactivity:	Human
Purification:	Affinity-chromatography

Target Details

Target:	BUB1B
Alternative Name:	BUB1B (BUB1B Products)
Background:	Background: Essential component of the mitotic checkpoint. Required for normal mitosis

Target Details

progression. The mitotic checkpoint delays anaphase until all chromosomes are properly attached to the mitotic spindle. One of its checkpoint functions is to inhibit the activity of the anaphase-promoting complex/cyclosome (APC/C) by blocking the binding of CDC20 to APC/C, independently of its kinase activity. The other is to monitor kinetochore activities that depend on the kinetochore motor CENPE. Required for kinetochore localization of CENPE. Negatively regulates PLK1 activity in interphase cells and suppresses centrosome amplification. Also implicated in triggering apoptosis in polyploid cells that exit aberrantly from mitotic arrest. May play a role for tumor suppression.

Aliases: Mitotic checkpoint serine/threonine-protein kinase BUB1 beta (EC 2.7.11.1) (MAD3/BUB1-related protein kinase) (hBUBR1) (Mitotic checkpoint kinase MAD3L) (Protein SSK1), BUB1B, BUBR1 MAD3L SSK1

UniProt: [O60566](#)

Application Details

Application Notes: Recommended dilution: WB:1:500-1:5000, FC:1:20-1:200,

Restrictions: For Research Use only

Handling

Format: Liquid

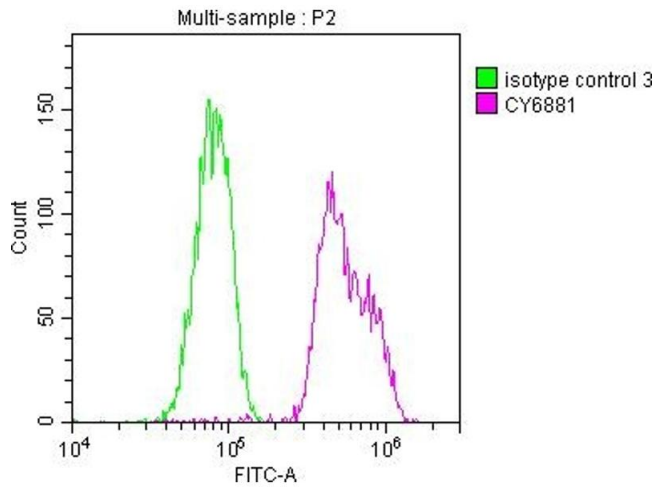
Buffer: Rabbit IgG in phosphate buffered saline, pH 7.4, 150 mM NaCl, 0.02 % sodium azide and 50 % glycerol.

Preservative: Sodium azide

Precaution of Use: This product contains Sodium azide: a POISONOUS AND HAZARDOUS SUBSTANCE which should be handled by trained staff only.

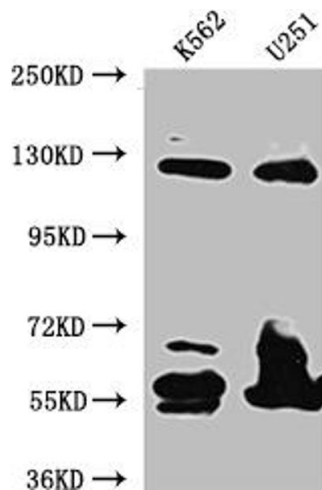
Storage: -20 °C,-80 °C

Storage Comment: Upon receipt, store at -20°C or -80°C. Avoid repeated freeze.



Flow Cytometry

Image 1. Overlay histogram showing HeLa cells stained with ABIN7127374 (red line) at 1:50. The cells were fixed with 70 % Ethylalcohol (18h) and then incubated in 10 % normal goat serum to block non-specific protein-protein interactions followed by the antibody (1 µg/1*10⁶cells) for 1 h at 4 °C. The secondary antibody used was FITC-conjugated goat anti-rabbit IgG (H+L) at 1/200 dilution for 30 min at 4 °C. Control antibody (green line) was Rabbit IgG (1 µg/1*10⁶cells) used under the same conditions. Acquisition of >10,000 events was performed.



Western Blotting

Image 2. Western Blot Positive WB detected in: K562 whole cell lysate, U-251 whole cell lysate All lanes: BubR1 antibody at 1:1000 Secondary Goat polyclonal to rabbit IgG at 1/50000 dilution Predicted band size: 120, 106, 122 kDa Observed band size: 125 kDa