

Datasheet for ABIN7127383

**Recombinant anti-Caspase 2 antibody**[Go to Product page](#)**1** Image

## Overview

Quantity:	100 µL
Target:	Caspase 2 (CASP2)
Reactivity:	Human
Host:	Rabbit
Antibody Type:	Recombinant Antibody
Clonality:	Monoclonal
Conjugate:	This Caspase 2 antibody is un-conjugated
Application:	Western Blotting (WB), ELISA

## Product Details

Immunogen:	A synthesized peptide derived from human Caspase-2
Clone:	7E5
Isotype:	IgG
Cross-Reactivity:	Human
Purification:	Affinity-chromatography

## Target Details

Target:	Caspase 2 (CASP2)
Alternative Name:	CASP2 ( <a href="#">CASP2 Products</a> )
Background:	Background: Involved in the activation cascade of caspases responsible for apoptosis

## Target Details

---

execution. Might function by either activating some proteins required for cell death or inactivating proteins necessary for cell survival.

Aliases: Caspase-2 (CASP-2) (EC 3.4.22.55) (Neural precursor cell expressed developmentally down-regulated protein 2) (NEDD-2) (Protease ICH-1) [Cleaved into: Caspase-2 subunit p18, Caspase-2 subunit p13, Caspase-2 subunit p12], CASP2, ICH1 NEDD2

UniProt: [P42575](#)

Pathways: [Apoptosis](#), [Caspase Cascade in Apoptosis](#), [Neurotrophin Signaling Pathway](#)

## Application Details

---

Application Notes: Recommended dilution: WB:1:500-1:5000,

Restrictions: For Research Use only

## Handling

---

Format: Liquid

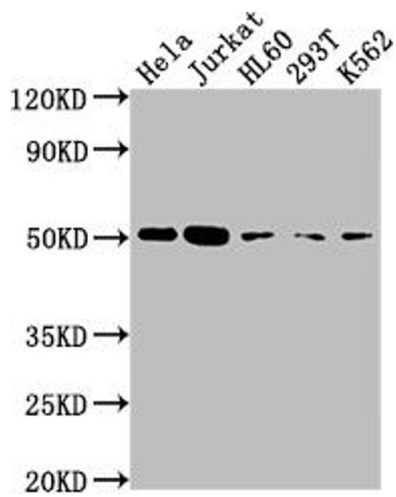
Buffer: Rabbit IgG in phosphate buffered saline, pH 7.4, 150 mM NaCl, 0.02 % sodium azide and 50 % glycerol.

Preservative: Sodium azide

Precaution of Use: This product contains Sodium azide: a POISONOUS AND HAZARDOUS SUBSTANCE which should be handled by trained staff only.

Storage: -20 °C, -80 °C

Storage Comment: Upon receipt, store at -20°C or -80°C. Avoid repeated freeze.



### Western Blotting

**Image 1.** Western Blot Positive WB detected in: HeLa whole cell lysate, Jurkat whole cell lysate, HL60 whole cell lysate, 293T whole cell lysate, K562 whole cell lysate All lanes: CASP2 antibody at 1:2000 Secondary Goat polyclonal to rabbit IgG at 1/50000 dilution Predicted band size: 51, 35, 11 kDa Observed band size: 51 kDa