



Datasheet for ABIN7127388

## Recombinant anti-CCL19 antibody



[Go to Product page](#)

### 2 Images

#### Overview

Quantity:	100 µL
Target:	CCL19
Reactivity:	Human
Host:	Rabbit
Antibody Type:	Recombinant Antibody
Clonality:	Monoclonal
Conjugate:	This CCL19 antibody is un-conjugated
Application:	Immunohistochemistry (IHC), ELISA

#### Product Details

Immunogen:	A synthesized peptide derived from human CCL19
Clone:	3A12
Isotype:	IgG
Cross-Reactivity:	Human
Purification:	Affinity-chromatography

#### Target Details

Target:	CCL19
Alternative Name:	CCL19 ( <a href="#">CCL19 Products</a> )
Background:	Background: May play a role not only in inflammatory and immunological responses but also in

## Target Details

---

normal lymphocyte recirculation and homing. May play an important role in trafficking of T-cells in thymus, and T-cell and B-cell migration to secondary lymphoid organs. Binds to chemokine receptor CCR7. Recombinant CCL19 shows potent chemotactic activity for T-cells and B-cells but not for granulocytes and monocytes. Binds to atypical chemokine receptor ACKR4 and mediates the recruitment of beta-arrestin (ARRB1/2) to ACKR4.

Aliases: C-C motif chemokine 19, Beta-chemokine exodus-3, CK beta-11, Epstein-Barr virus-induced molecule 1 ligand chemokine, EB11 ligand chemokine, ELC, Macrophage inflammatory protein 3 beta, MIP-3-beta, Small-inducible cytokine A19, CCL19, ELC, MIP3B, SCYA19

---

UniProt: [Q99731](#)

---

Pathways: [Positive Regulation of Immune Effector Process](#)

## Application Details

---

Application Notes: Recommended dilution: IHC:1:50-1:200,

---

Restrictions: For Research Use only

## Handling

---

Format: Liquid

---

Buffer: Rabbit IgG in phosphate buffered saline , pH 7.4, 150 mM NaCl, 0.02 % sodium azide and 50 % glycerol.

---

Preservative: Sodium azide

---

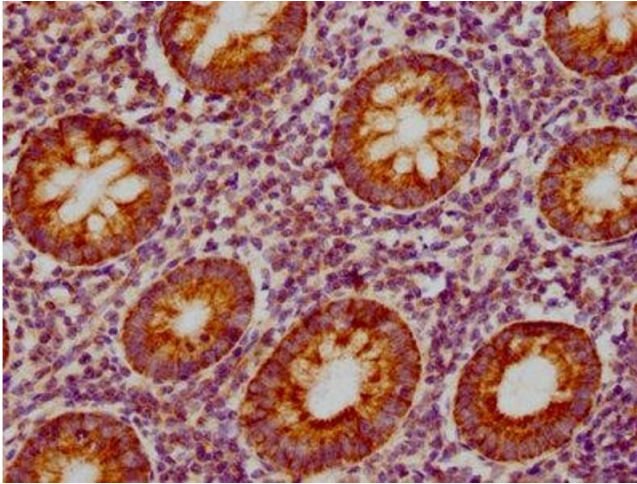
Precaution of Use: This product contains Sodium azide: a POISONOUS AND HAZARDOUS SUBSTANCE which should be handled by trained staff only.

---

Storage: -20 °C,-80 °C

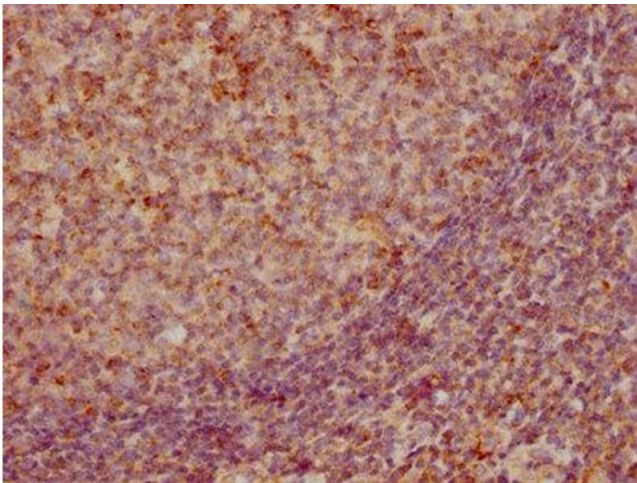
---

Storage Comment: Upon receipt, store at -20°C or -80°C. Avoid repeated freeze.



#### Immunohistochemistry

**Image 1.** IHC image of ABIN7127388 diluted at 1:155 and staining in paraffin-embedded human appendix tissue performed on a Leica Bond™ system. After dewaxing and hydration, antigen retrieval was mediated by high pressure in a citrate buffer (pH 6.0). Section was blocked with 10 % normal goat serum 30 min at RT. Then primary antibody (1 % BSA) was incubated at 4 °C overnight. The primary is detected by a biotinylated secondary antibody and visualized using an HRP conjugated SP system.



#### Immunohistochemistry

**Image 2.** IHC image of ABIN7127388 diluted at 1:155 and staining in paraffin-embedded human tonsil tissue performed on a Leica Bond™ system. After dewaxing and hydration, antigen retrieval was mediated by high pressure in a citrate buffer (pH 6.0). Section was blocked with 10 % normal goat serum 30 min at RT. Then primary antibody (1 % BSA) was incubated at 4 °C overnight. The primary is detected by a biotinylated secondary antibody and visualized using an HRP conjugated SP system.