

Datasheet for ABIN7127405

Recombinant anti-CD48 antibody[Go to Product page](#)**1** Image

Overview

Quantity:	100 µL
Target:	CD48
Reactivity:	Human
Host:	Rabbit
Antibody Type:	Recombinant Antibody
Clonality:	Monoclonal
Conjugate:	This CD48 antibody is un-conjugated
Application:	Western Blotting (WB), ELISA

Product Details

Immunogen:	A synthesized peptide derived from human CD48
Clone:	7E1
Isotype:	IgG
Cross-Reactivity:	Human
Purification:	Affinity-chromatography

Target Details

Target:	CD48
Alternative Name:	CD48 (CD48 Products)
Background:	Background: Ligand for CD2. Might facilitate interaction between activated lymphocytes.

Target Details

Probably involved in regulating T-cell activation.

Aliases: CD48 antigen (B-lymphocyte activation marker BLAST-1) (BCM1 surface antigen) (Leukocyte antigen MEM-102) (SLAM family member 2) (SLAMF2) (Signaling lymphocytic activation molecule 2) (TCT.1) (CD antigen CD48), CD48, BCM1 BLAST1

UniProt: [P09326](#)

Application Details

Application Notes: Recommended dilution: WB:1:500-1:5000,

Restrictions: For Research Use only

Handling

Format: Liquid

Buffer: Rabbit IgG in phosphate buffered saline, pH 7.4, 150 mM NaCl, 0.02 % sodium azide and 50 % glycerol.

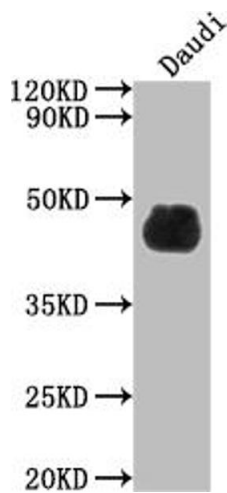
Preservative: Sodium azide

Precaution of Use: This product contains Sodium azide: a POISONOUS AND HAZARDOUS SUBSTANCE which should be handled by trained staff only.

Storage: -20 °C,-80 °C

Storage Comment: Upon receipt, store at -20°C or -80°C. Avoid repeated freeze.

Images



Western Blotting

Image 1. Western Blot Positive WB detected in: Daudi whole cell lysate All lanes: CD48 antibody at 1:2000 Secondary Goat polyclonal to rabbit IgG at 1/50000 dilution Predicted band size: 28, 20 kDa Observed band size: 45 kDa