

Datasheet for ABIN7127410

Recombinant anti-CD8 antibody**3** Images[Go to Product page](#)

Overview

Quantity:	100 µL
Target:	CD8
Reactivity:	Human
Host:	Rabbit
Antibody Type:	Recombinant Antibody
Clonality:	Monoclonal
Conjugate:	This CD8 antibody is un-conjugated
Application:	Immunohistochemistry (IHC), Immunoprecipitation (IP), ELISA, Western Blotting (WB)

Product Details

Immunogen:	A synthesized peptide derived from human CD80
Clone:	3C3
Isotype:	IgG
Cross-Reactivity:	Human
Purification:	Affinity-chromatography

Target Details

Target:	CD8
Alternative Name:	CD8 (CD8 Products)
Background:	Background: Involved in the costimulatory signal essential for T-lymphocyte activation. T-cell

Target Details

proliferation and cytokine production is induced by the binding of CD28, binding to CTLA-4 has opposite effects and inhibits T-cell activation.

Aliases: T-lymphocyte activation antigen CD80 (Activation B7-1 antigen) (BB1) (CTLA-4 counter-receptor B7.1) (B7) (CD antigen CD80), CD80, CD28LG CD28LG1 LAB7

UniProt: [P33681](#)

Application Details

Application Notes: Recommended dilution: WB:1:500-1:5000, IHC:1:50-1:200, IP:1:200-1:1000,

Restrictions: For Research Use only

Handling

Format: Liquid

Buffer: Rabbit IgG in phosphate buffered saline, pH 7.4, 150 mM NaCl, 0.02 % sodium azide and 50 % glycerol.

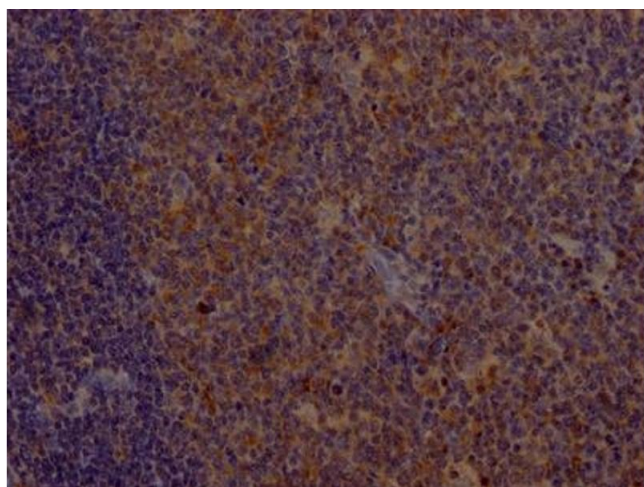
Preservative: Sodium azide

Precaution of Use: This product contains Sodium azide: a POISONOUS AND HAZARDOUS SUBSTANCE which should be handled by trained staff only.

Storage: -20 °C, -80 °C

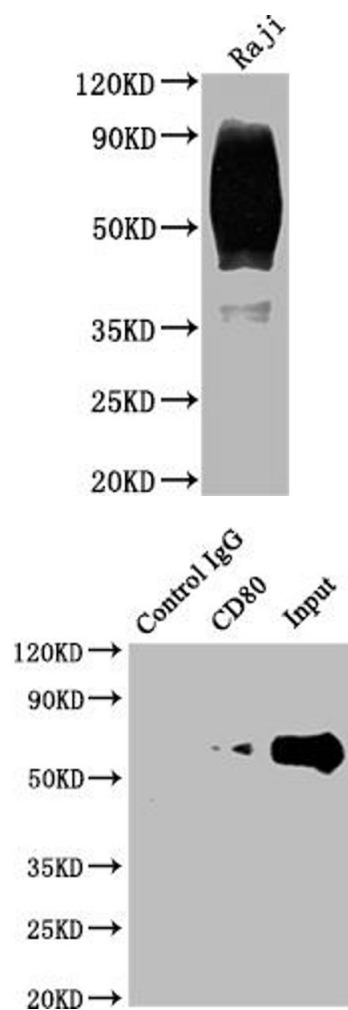
Storage Comment: Upon receipt, store at -20°C or -80°C. Avoid repeated freeze.

Images



Immunohistochemistry

Image 1. IHC image of ABIN7127410 diluted at 1:100 and staining in paraffin-embedded human tonsil tissue performed on a Leica Bond™ system. After dewaxing and hydration, antigen retrieval was mediated by high pressure in a citrate buffer (pH 6.0). Section was blocked with 10 % normal goat serum 30 min at RT. Then primary antibody (1 % BSA) was incubated at 4 °C overnight. The primary is detected by a Goat anti-rabbit IgG polymer labeled by HRP and visualized using 0.05 % DAB.



Western Blotting

Image 2. Western Blot Positive WB detected in: Raji whole cell lysate All lanes: CD80 antibody at 1:2000 Secondary Goat polyclonal to rabbit IgG at 1/50000 dilution Predicted band size: 34, 30, 19 kDa Observed band size: 60 kDa

Western Blotting

Image 3. Immunoprecipitating CD80 in Raji whole cell lysate Lane 1: Rabbit control IgG instead of ABIN7127410 in Raji whole cell lysate. For western blotting,a HRP-conjugated Protein G antibody was used as the secondary antibody (1/2000) Lane 2: ABIN7127410(2 µg)+ Raji whole cell lysate(500 µg) Lane 3: Raji whole cell lysate (10 µg)