

Datasheet for ABIN7127412

Recombinant anti-CDC25C antibody

4 Images

[Go to Product page](#)

Overview

Quantity:	100 µL
Target:	CDC25C
Reactivity:	Human
Host:	Rabbit
Antibody Type:	Recombinant Antibody
Clonality:	Monoclonal
Conjugate:	This CDC25C antibody is un-conjugated
Application:	Western Blotting (WB), ELISA, Immunohistochemistry (IHC), Immunofluorescence (IF), Immunoprecipitation (IP)

Product Details

Immunogen:	A synthesized peptide derived from human CDC25C
Clone:	3E6
Isotype:	IgG
Cross-Reactivity:	Human
Purification:	Affinity-chromatography

Target Details

Target:	CDC25C
Alternative Name:	CDC25C (CDC25C Products)

Target Details

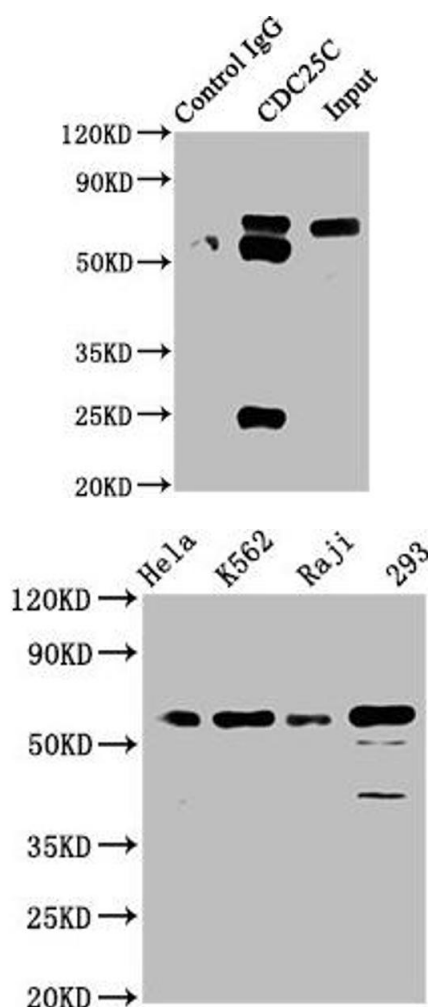
Background:	Background: Functions as a dosage-dependent inducer in mitotic control. Tyrosine protein phosphatase required for progression of the cell cycle. When phosphorylated, highly effective in activating G2 cells into prophase. Directly dephosphorylates CDK1 and activates its kinase activity. Aliases: M-phase inducer phosphatase 3, Dual specificity phosphatase Cdc25C, CDC25C
UniProt:	P30307
Pathways:	Cell Division Cycle, M Phase

Application Details

Application Notes:	Recommended dilution: WB:1:500-1:5000, IHC:1:50-1:200, IF:1:20-1:200, IP:1:200-1:1000,
Restrictions:	For Research Use only

Handling

Format:	Liquid
Buffer:	Rabbit IgG in phosphate buffered saline , pH 7.4, 150 mM NaCl, 0.02 % sodium azide and 50 % glycerol.
Preservative:	Sodium azide
Precaution of Use:	This product contains Sodium azide: a POISONOUS AND HAZARDOUS SUBSTANCE which should be handled by trained staff only.
Storage:	-20 °C,-80 °C
Storage Comment:	Upon receipt, store at -20°C or -80°C. Avoid repeated freeze.

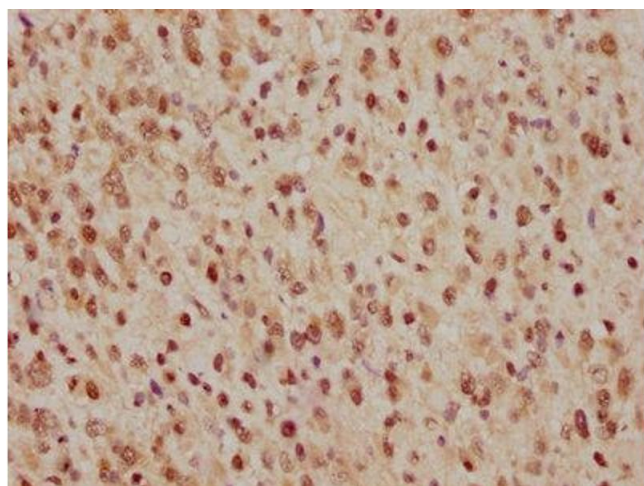


Western Blotting

Image 1. Immunoprecipitating CDC25C in HEK293 whole cell lysate Lane 1: Rabbit control IgG instead of ABIN7127412 in HEK293 whole cell lysate. For western blotting, a HRP-conjugated Protein G antibody was used as the secondary antibody (1/2000) Lane 2: ABIN7127412 (3 μ g) + HEK293 whole cell lysate (500 μ g) Lane 3: HEK293 whole cell lysate (20 μ g)

Western Blotting

Image 2. Western Blot Positive WB detected in: HeLa whole cell lysate, K562 whole cell lysate, Raji whole cell lysate, 293 whole cell lysate All lanes: Cdc25C antibody at 1.65 μ g/mL Secondary Goat polyclonal to rabbit IgG at 1/50000 dilution Predicted band size: 54, 52, 49, 46 KDa Observed band size: 60 KDa



Immunohistochemistry

Image 3. IHC image of ABIN7127412 diluted at 1:165 and staining in paraffin-embedded human glioma cancer performed on a Leica Bond™ system. After dewaxing and hydration, antigen retrieval was mediated by high pressure in a citrate buffer (pH 6.0). Section was blocked with 10 % normal goat serum 30 min at RT. Then primary antibody (1 % BSA) was incubated at 4 °C overnight. The primary is detected by a biotinylated secondary antibody and visualized using an HRP conjugated SP system.

Please check the [product details page](#) for more images. Overall 4 images are available for ABIN7127412.