

Datasheet for ABIN7127413

Recombinant anti-CDC37 antibody[Go to Product page](#)**2** Images

Overview

Quantity:	100 µL
Target:	CDC37
Reactivity:	Human
Host:	Rabbit
Antibody Type:	Recombinant Antibody
Clonality:	Monoclonal
Conjugate:	This CDC37 antibody is un-conjugated
Application:	Western Blotting (WB), ELISA, Flow Cytometry (FACS)

Product Details

Immunogen:	A synthesized peptide derived from human Cdc37
Clone:	10C3
Isotype:	IgG
Cross-Reactivity:	Human
Purification:	Affinity-chromatography

Target Details

Target:	CDC37
Alternative Name:	CDC37 (CDC37 Products)
Background:	Background: Co-chaperone that binds to numerous kinases and promotes their interaction with

Target Details

the Hsp90 complex, resulting in stabilization and promotion of their activity (PubMed:8666233).
Inhibits HSP90AA1 ATPase activity (PubMed:23569206).
Aliases: Hsp90 co-chaperone Cdc37 (Hsp90 chaperone protein kinase-targeting subunit)
(p50Cdc37) [Cleaved into: Hsp90 co-chaperone Cdc37, N-terminally processed], CDC37,
CDC37A

UniProt: [Q16543](#)

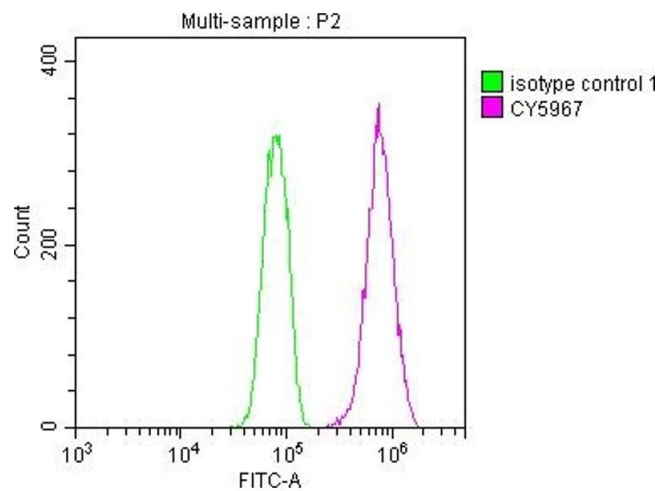
Application Details

Application Notes: Recommended dilution: WB:1:500-1:5000, FC:1:20-1:200,
Restrictions: For Research Use only

Handling

Format: Liquid
Buffer: Rabbit IgG in phosphate buffered saline, pH 7.4, 150 mM NaCl, 0.02 % sodium azide and 50 %
glycerol.
Preservative: Sodium azide
Precaution of Use: This product contains Sodium azide: a POISONOUS AND HAZARDOUS SUBSTANCE which
should be handled by trained staff only.
Storage: -20 °C,-80 °C
Storage Comment: Upon receipt, store at -20°C or -80°C. Avoid repeated freeze.

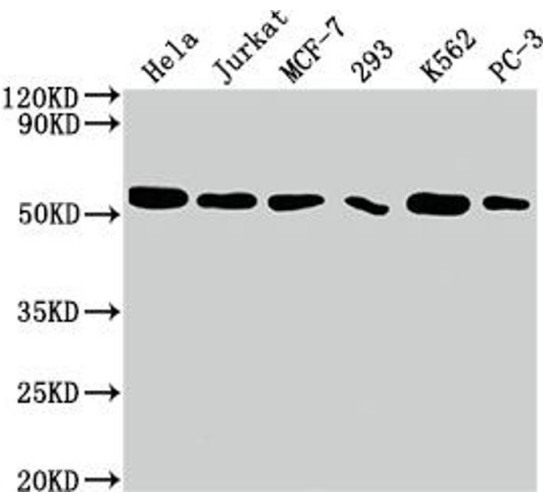
Images



Flow Cytometry

Image 1. Overlay histogram showing HeLa cells stained with ABIN7127413 (red line) at 1:50. The cells were fixed with 70 % Ethylalcohol (18h) and then incubated in 10 % normal goat serum to block non-specific protein-protein interactions followed by the antibody (1 µg/1*10⁶ cells) for 1 h at 4 °C. The secondary antibody used was FITC-conjugated goat anti-rabbit IgG (H+L) at 1/200 dilution for 30 min at 4 °C. Control antibody (green line) was Rabbit IgG

(1 μ g/1*10⁶cells) used under the same conditions.
Acquisition of >10,000 events was performed.



Western Blotting

Image 2. Western Blot Positive WB detected in: HeLa whole cell lysate, Jurkat whole cell lysate, MCF-7 whole cell lysate, 293 whole cell lysate, K562 whole cell lysate, PC-3 whole cell lysate All lanes: CDC37 antibody at 1:2000 Secondary Goat polyclonal to rabbit IgG at 1/50000 dilution Predicted band size: 45 kDa Observed band size: 50 kDa