

Datasheet for ABIN7127420

Recombinant anti-CDK6 antibody[Go to Product page](#)**2** Images

Overview

Quantity:	100 µL
Target:	CDK6
Reactivity:	Human
Host:	Rabbit
Antibody Type:	Recombinant Antibody
Clonality:	Monoclonal
Conjugate:	This CDK6 antibody is un-conjugated
Application:	Western Blotting (WB), ELISA, Immunoprecipitation (IP)

Product Details

Immunogen:	A synthesized peptide derived from human CDK6
Clone:	8G3
Isotype:	IgG
Cross-Reactivity:	Human
Purification:	Affinity-chromatography

Target Details

Target:	CDK6
Alternative Name:	CDK6 (CDK6 Products)
Background:	Background: Serine/threonine-protein kinase involved in the control of the cell cycle and

Target Details

differentiation, promotes G1/S transition. Phosphorylates pRB/RB1 and NPM1. Interacts with D-type G1 cyclins during interphase at G1 to form a pRB/RB1 kinase and controls the entrance into the cell cycle. Involved in initiation and maintenance of cell cycle exit during cell differentiation, prevents cell proliferation and regulates negatively cell differentiation, but is required for the proliferation of specific cell types (e.g. erythroid and hematopoietic cells). Essential for cell proliferation within the dentate gyrus of the hippocampus and the subventricular zone of the lateral ventricles. Required during thymocyte development. Promotes the production of newborn neurons, probably by modulating G1 length. Promotes, at least in astrocytes, changes in patterns of gene expression, changes in the actin cytoskeleton including loss of stress fibers, and enhanced motility during cell differentiation. Prevents myeloid differentiation by interfering with RUNX1 and reducing its transcription transactivation activity, but promotes proliferation of normal myeloid progenitors. Delays senescence. Promotes the proliferation of beta-cells in pancreatic islets of Langerhans. May play a role in the centrosome organization during the cell cycle phases (PubMed:23918663). Aliases: Cyclin-dependent kinase 6 (EC 2.7.11.22) (Cell division protein kinase 6) (Serine/threonine-protein kinase PLSTIRE), CDK6, CDKN6

UniProt: [Q00534](#)

Pathways: [Cell Division Cycle](#), [Mitotic G1-G1/S Phases](#)

Application Details

Application Notes: Recommended dilution: WB:1:500-1:5000, IP:1:200-1:1000,

Restrictions: For Research Use only

Handling

Format: Liquid

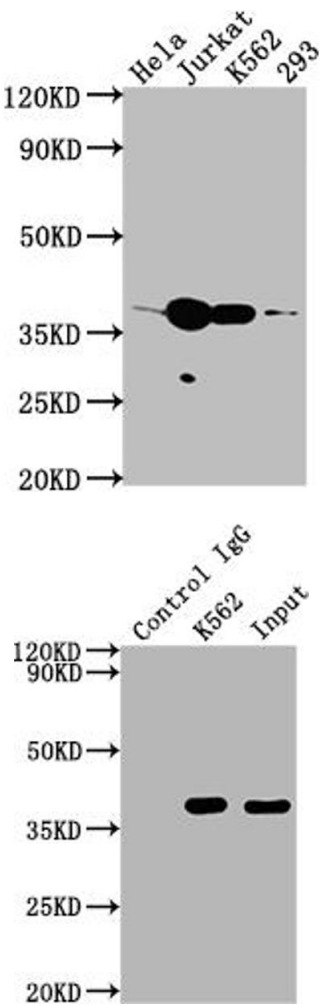
Buffer: Rabbit IgG in phosphate buffered saline, pH 7.4, 150 mM NaCl, 0.02 % sodium azide and 50 % glycerol.

Preservative: Sodium azide

Precaution of Use: This product contains Sodium azide: a POISONOUS AND HAZARDOUS SUBSTANCE which should be handled by trained staff only.

Storage: -20 °C,-80 °C

Storage Comment: Upon receipt, store at -20°C or -80°C. Avoid repeated freeze.



Western Blotting

Image 1. Western Blot Positive WB detected in: Hela whole cell lysate, Jurkat whole cell lysate, K562 whole cell lysate, 293 whole cell lysate All lanes: CDK6 antibody at 1:2000 Secondary Goat polyclonal to rabbit IgG at 1/50000 dilution Predicted band size: 37 kDa Observed band size: 37 kDa

Western Blotting

Image 2. Immunoprecipitating CDK6 in K562 whole cell lysate Lane 1: Rabbit control IgG instead of ABIN7127420 in K562 whole cell lysate. For western blotting,a HRP-conjugated Protein G antibody was used as the secondary antibody (1/2000) Lane 2: ABIN7127420(2 µg)+ K562 whole cell lysate(500 µg) Lane 3: K562 whole cell lysate (10 µg)