



[Go to Product page](#)

Datasheet for ABIN7127433

## Recombinant anti-COMT antibody

### 2 Images

#### Overview

Quantity:	100 µL
Target:	COMT
Reactivity:	Human
Host:	Rabbit
Antibody Type:	Recombinant Antibody
Clonality:	Monoclonal
Application:	Western Blotting (WB), ELISA, Immunohistochemistry (IHC)

#### Product Details

Immunogen:	A synthesized peptide derived from human COMT
Clone:	8E1
Isotype:	IgG
Cross-Reactivity:	Human
Purification:	Affinity-chromatography

#### Target Details

Target:	COMT
Alternative Name:	COMT ( <a href="#">COMT Products</a> )
Background:	Background: Catalyzes the O-methylation, and thereby the inactivation, of catecholamine neurotransmitters and catechol hormones. Also shortens the biological half-lives of certain

## Target Details

neuroactive drugs, like L-DOPA, alpha-methyl DOPA and isoproterenol.

Aliases: Catechol O-methyltransferase (EC 2.1.1.6), COMT

UniProt: [P21964](#)

Pathways: [Steroid Hormone Biosynthesis](#), [SARS-CoV-2 Protein Interactome](#)

## Application Details

Application Notes: Recommended dilution: WB:1:500-1:5000, IHC:1:50-1:200,

Restrictions: For Research Use only

## Handling

Format: Liquid

Buffer: Rabbit IgG in phosphate buffered saline, pH 7.4, 150 mM NaCl, 0.02 % sodium azide and 50 % glycerol.

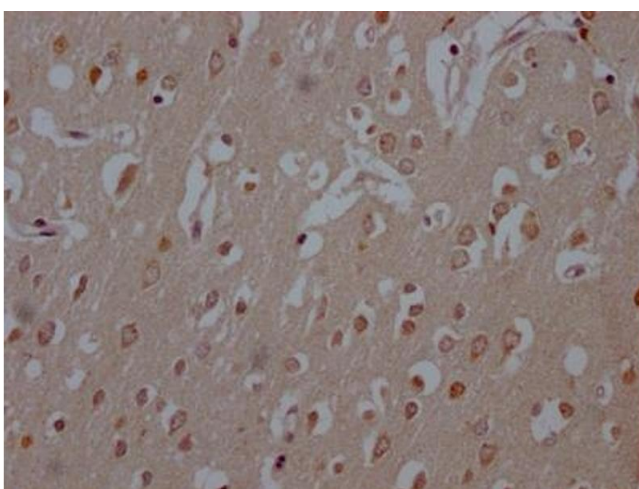
Preservative: Sodium azide

Precaution of Use: This product contains Sodium azide: a POISONOUS AND HAZARDOUS SUBSTANCE which should be handled by trained staff only.

Storage: -20 °C,-80 °C

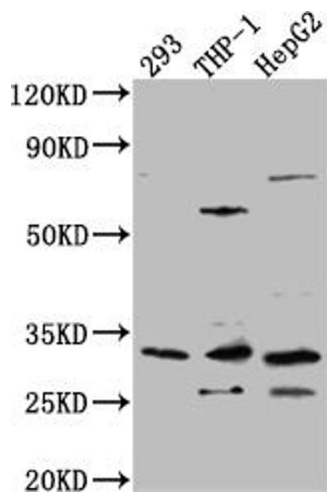
Storage Comment: Upon receipt, store at -20°C or -80°C. Avoid repeated freeze.

## Images



### Immunohistochemistry

**Image 1.** IHC image of ABIN7127433 diluted at 1:100 and staining in paraffin-embedded human brain tissue performed on a Leica Bond™ system. After dewaxing and hydration, antigen retrieval was mediated by high pressure in a citrate buffer (pH 6.0). Section was blocked with 10 % normal goat serum 30 min at RT. Then primary antibody (1 % BSA) was incubated at 4 °C overnight. The primary is detected by a Goat anti-rabbit IgG polymer labeled by HRP and visualized using 0.05 % DAB.



### Western Blotting

**Image 2.** Western Blot Positive WB detected in: 293 whole cell lysate, THP-1 whole cell lysate, HepG2 whole cell lysate  
All lanes: COMT Antibody at 1:1000 Secondary Goat polyclonal to rabbit IgG at 1/50000 dilution Predicted band size: 31, 25 kDa Observed band size: 31 kDa