



[Go to Product page](#)

Datasheet for ABIN7127434

Recombinant anti-PTGS1 antibody

2 Images

Overview

Quantity:	100 µL
Target:	PTGS1
Reactivity:	Human
Host:	Rabbit
Antibody Type:	Recombinant Antibody
Clonality:	Monoclonal
Conjugate:	This PTGS1 antibody is un-conjugated
Application:	Western Blotting (WB), ELISA, Flow Cytometry (FACS)

Product Details

Immunogen:	A synthesized peptide derived from human COX1
Clone:	6B6
Isotype:	IgG
Cross-Reactivity:	Human, Mouse
Purification:	Affinity-chromatography

Target Details

Target:	PTGS1
Alternative Name:	PTGS1 (PTGS1 Products)
Background:	Background: Converts arachidonate to prostaglandin H2 (PGH2), a committed step in

Target Details

prostanoid synthesis. Involved in the constitutive production of prostanoids in particular in the stomach and platelets. In gastric epithelial cells, it is a key step in the generation of prostaglandins, such as prostaglandin E2 (PGE2), which plays an important role in cytoprotection. In platelets, it is involved in the generation of thromboxane A2 (TXA2), which promotes platelet activation and aggregation, vasoconstriction and proliferation of vascular smooth muscle cells.

Aliases: Prostaglandin G/H synthase 1 (EC 1.14.99.1) (Cyclooxygenase-1) (COX-1) (Prostaglandin H2 synthase 1) (PGH synthase 1) (PGHS-1) (PHS 1) (Prostaglandin-endoperoxide synthase 1), PTGS1, COX1

UniProt: [P23219](#)

Application Details

Application Notes: Recommended dilution: WB:1:500-1:5000, FC:1:20-1:200,

Restrictions: For Research Use only

Handling

Format: Liquid

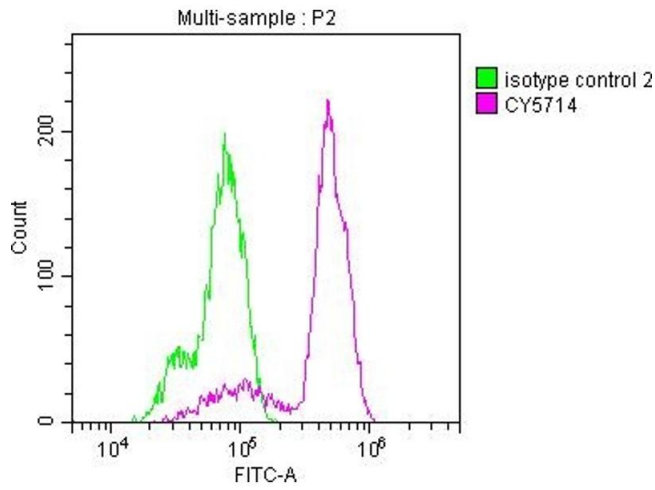
Buffer: Rabbit IgG in phosphate buffered saline, pH 7.4, 150 mM NaCl, 0.02 % sodium azide and 50 % glycerol.

Preservative: Sodium azide

Precaution of Use: This product contains Sodium azide: a POISONOUS AND HAZARDOUS SUBSTANCE which should be handled by trained staff only.

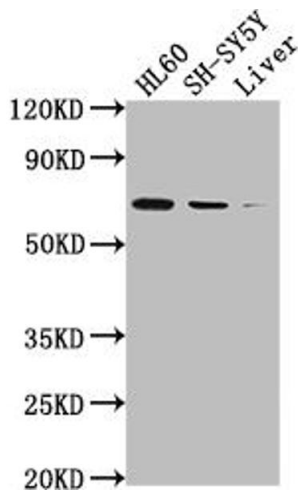
Storage: -20 °C,-80 °C

Storage Comment: Upon receipt, store at -20°C or -80°C. Avoid repeated freeze.



Flow Cytometry

Image 1. Overlay histogram showing HeLa cells stained with ABIN7127434 (red line) at 1:50. The cells were fixed with 70 % Ethylalcohol (18h) and then incubated in 10 % normal goat serum to block non-specific protein-protein interactions followed by the antibody (1 µg/1*10⁶cells) for 1 h at 4 °C. The secondary antibody used was FITC-conjugated goat anti-rabbit IgG (H+L) at 1/200 dilution for 30 min at 4 °C. Control antibody (green line) was Rabbit IgG (1 µg/1*10⁶cells) used under the same conditions. Acquisition of >10,000 events was performed.



Western Blotting

Image 2. Western Blot Positive WB detected in: HL60 whole cell lysate, SH-SY5Y whole cell lysate, Mouse liver tissue All lanes: PTGS1 antibody at 1:2000 Secondary Goat polyclonal to rabbit IgG at 1/50000 dilution Predicted band size: 69, 65, 62, 57, 72, 73 kDa Observed band size: 72 kDa