

Datasheet for ABIN7127437

**Recombinant anti-CTLA4 antibody**[Go to Product page](#)**2** Images

## Overview

Quantity:	100 µL
Target:	CTLA4
Reactivity:	Human
Host:	Rabbit
Antibody Type:	Recombinant Antibody
Clonality:	Monoclonal
Conjugate:	This CTLA4 antibody is un-conjugated
Application:	ELISA, Immunohistochemistry (IHC)

## Product Details

Immunogen:	A synthesized peptide derived from human CTLA4 (CD152)
Clone:	3B10
Isotype:	IgG
Cross-Reactivity:	Human
Purification:	Affinity-chromatography

## Target Details

Target:	CTLA4
Alternative Name:	CTLA4 ( <a href="#">CTLA4 Products</a> )
Background:	Background: Inhibitory receptor acting as a major negative regulator of T-cell responses. The

## Target Details

affinity of CTLA4 for its natural B7 family ligands, CD80 and CD86, is considerably stronger than the affinity of their cognate stimulatory coreceptor CD28.

Aliases: Cytotoxic T-lymphocyte protein 4 (Cytotoxic T-lymphocyte-associated antigen 4) (CTLA-4) (CD antigen CD152), CTLA4, CD152

UniProt: [P16410](#)

Pathways: [Cancer Immune Checkpoints](#)

## Application Details

Application Notes: Recommended dilution: IHC:1:50-1:200,

Restrictions: For Research Use only

## Handling

Format: Liquid

Buffer: Rabbit IgG in phosphate buffered saline, pH 7.4, 150 mM NaCl, 0.02 % sodium azide and 50 % glycerol.

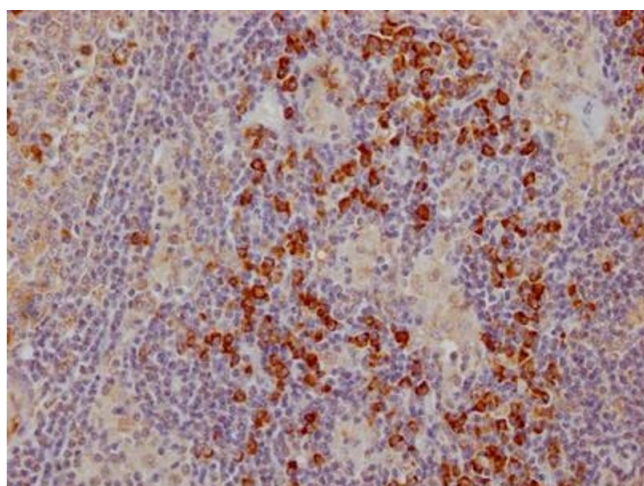
Preservative: Sodium azide

Precaution of Use: This product contains Sodium azide: a POISONOUS AND HAZARDOUS SUBSTANCE which should be handled by trained staff only.

Storage: -20 °C,-80 °C

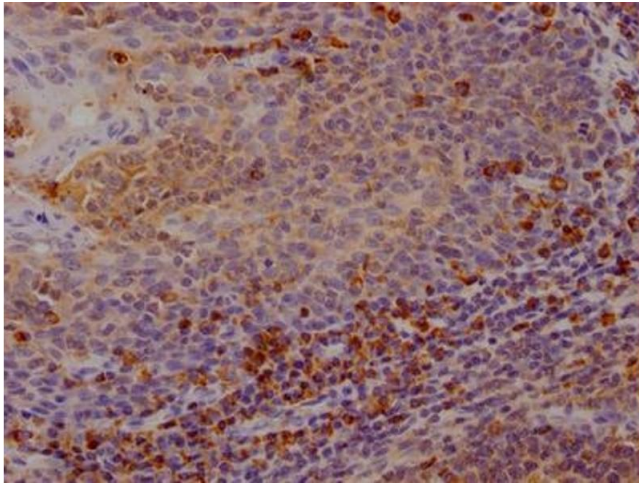
Storage Comment: Upon receipt, store at -20°C or -80°C. Avoid repeated freeze.

## Images



### Immunohistochemistry

**Image 1.** IHC image of ABIN7127437 diluted at 1:100 and staining in paraffin-embedded human lymph node tissue performed on a Leica Bond™ system. After dewaxing and hydration, antigen retrieval was mediated by high pressure in a citrate buffer (pH 6.0). Section was blocked with 10 % normal goat serum 30 min at RT. Then primary antibody (1 % BSA) was incubated at 4 °C overnight. The primary is detected by a Goat anti-rabbit IgG polymer labeled by HRP



and visualized using 0.05 % DAB.

### Immunohistochemistry

**Image 2.** IHC image of ABIN7127437 diluted at 1:100 and staining in paraffin-embedded human tonsil tissue performed on a Leica Bond™ system. After dewaxing and hydration, antigen retrieval was mediated by high pressure in a citrate buffer (pH 6.0). Section was blocked with 10 % normal goat serum 30 min at RT. Then primary antibody (1 % BSA) was incubated at 4 °C overnight. The primary is detected by a Goat anti-rabbit IgG polymer labeled by HRP and visualized using 0.05 % DAB.