

Datasheet for ABIN7127454

Recombinant anti-Dihydrofolate Reductase antibody[Go to Product page](#)

4 Images

Overview

Quantity:	100 µL
Target:	Dihydrofolate Reductase (DHFR)
Reactivity:	Human
Host:	Rabbit
Antibody Type:	Recombinant Antibody
Clonality:	Monoclonal
Conjugate:	This Dihydrofolate Reductase antibody is un-conjugated
Application:	Western Blotting (WB), ELISA, Immunohistochemistry (IHC), Immunoprecipitation (IP)

Product Details

Immunogen:	A synthesized peptide derived from human DHFR
Clone:	9B2
Isotype:	IgG
Cross-Reactivity:	Human, Mouse, Rat
Purification:	Affinity-chromatography

Target Details

Target:	Dihydrofolate Reductase (DHFR)
Alternative Name:	DHFR (DHFR Products)
Background:	Background: Key enzyme in folate metabolism. Contributes to the de novo mitochondrial

Target Details

thymidylate biosynthesis pathway. Catalyzes an essential reaction for de novo glycine and purine synthesis, and for DNA precursor synthesis. Binds its own mRNA and that of DHFR2.
Aliases: Dihydrofolate reductase (EC 1.5.1.3), DHFR

UniProt: [P00374](#)

Pathways: [Mitotic G1-G1/S Phases](#)

Application Details

Application Notes: Recommended dilution: WB:1:500-1:5000, IHC:1:50-1:200, IP:1:200-1:1000,

Restrictions: For Research Use only

Handling

Format: Liquid

Buffer: Rabbit IgG in phosphate buffered saline, pH 7.4, 150 mM NaCl, 0.02 % sodium azide and 50 % glycerol.

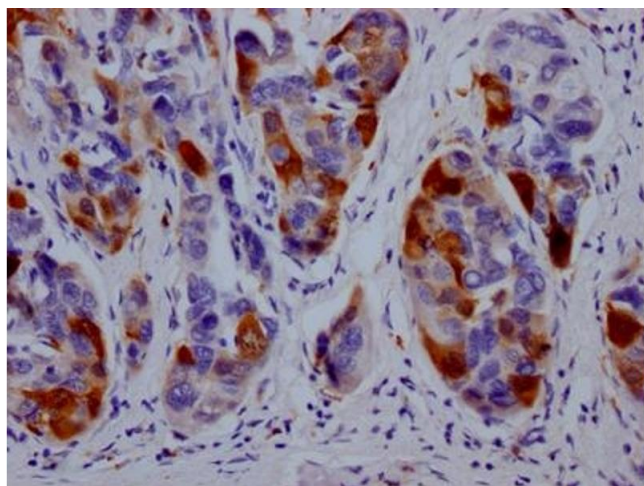
Preservative: Sodium azide

Precaution of Use: This product contains Sodium azide: a POISONOUS AND HAZARDOUS SUBSTANCE which should be handled by trained staff only.

Storage: -20 °C,-80 °C

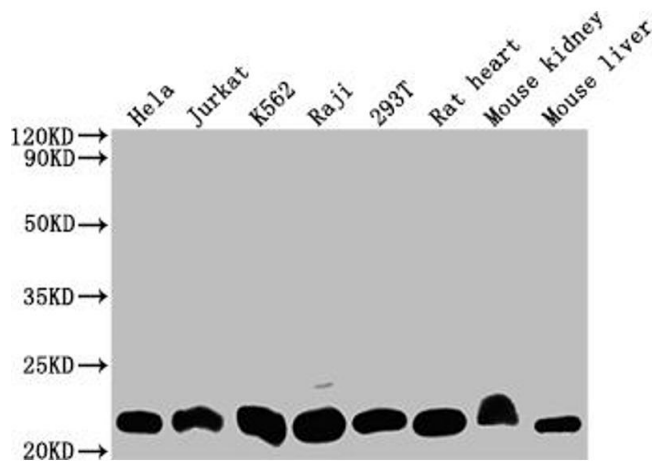
Storage Comment: Upon receipt, store at -20°C or -80°C. Avoid repeated freeze.

Images



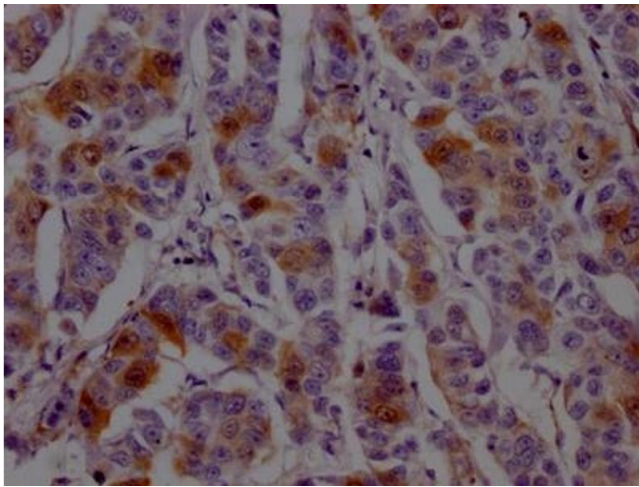
Immunohistochemistry

Image 1. IHC image of ABIN7127454 diluted at 1:100 and staining in paraffin-embedded human liver cancer performed on a Leica Bond™ system. After dewaxing and hydration, antigen retrieval was mediated by high pressure in a citrate buffer (pH 6.0). Section was blocked with 10 % normal goat serum 30 min at RT. Then primary antibody (1 % BSA) was incubated at 4 °C overnight. The primary is detected by a Goat anti-rabbit IgG polymer labeled by HRP and visualized using 0.05 % DAB.



Western Blotting

Image 2. Western Blot Positive WB detected in: HeLa whole cell lysate, Jurkat whole cell lysate, K562 whole cell lysate, Raji whole cell lysate, 293T whole cell lysate, Rat heart tissue, Mouse kidney tissue, Mouse liver tissue All lanes: DHFR antibody at 1:2000 Secondary Goat polyclonal to rabbit IgG at 1/50000 dilution Predicted band size: 22, 16 kDa Observed band size: 22 kDa



Immunohistochemistry

Image 3. IHC image of ABIN7127454 diluted at 1:100 and staining in paraffin-embedded human breast cancer performed on a Leica Bond™ system. After dewaxing and hydration, antigen retrieval was mediated by high pressure in a citrate buffer (pH 6.0). Section was blocked with 10 % normal goat serum 30 min at RT. Then primary antibody (1 % BSA) was incubated at 4 °C overnight. The primary is detected by a Goat anti-rabbit IgG polymer labeled by HRP and visualized using 0.05 % DAB.

Please check the [product details page](#) for more images. Overall 4 images are available for ABIN7127454.