

Datasheet for ABIN7127468

Recombinant anti-EIF4A1 antibody**2** Images[Go to Product page](#)

Overview

Quantity:	100 µL
Target:	EIF4A1
Reactivity:	Human
Host:	Rabbit
Antibody Type:	Recombinant Antibody
Clonality:	Monoclonal
Conjugate:	This EIF4A1 antibody is un-conjugated
Application:	Western Blotting (WB), Immunofluorescence (IF), ELISA

Product Details

Immunogen:	A synthesized peptide derived from human eIF4A1
Clone:	7C3
Isotype:	IgG
Cross-Reactivity:	Human
Purification:	Affinity-chromatography

Target Details

Target:	EIF4A1
Alternative Name:	EIF4A1 (EIF4A1 Products)
Background:	Background: ATP-dependent RNA helicase which is a subunit of the eIF4F complex involved in

Target Details

cap recognition and is required for mRNA binding to ribosome. In the current model of translation initiation, eIF4A unwinds RNA secondary structures in the 5'-UTR of mRNAs which is necessary to allow efficient binding of the small ribosomal subunit, and subsequent scanning for the initiator codon.

Aliases: Eukaryotic initiation factor 4A-I (eIF-4A-I) (eIF4A-I) (EC 3.6.4.13) (ATP-dependent RNA helicase eIF4A-1), EIF4A1, DDX2A EIF4A

UniProt: [P60842](#)

Application Details

Application Notes: Recommended dilution: WB:1:500-1:5000, IF:1:20-1:200,

Restrictions: For Research Use only

Handling

Format: Liquid

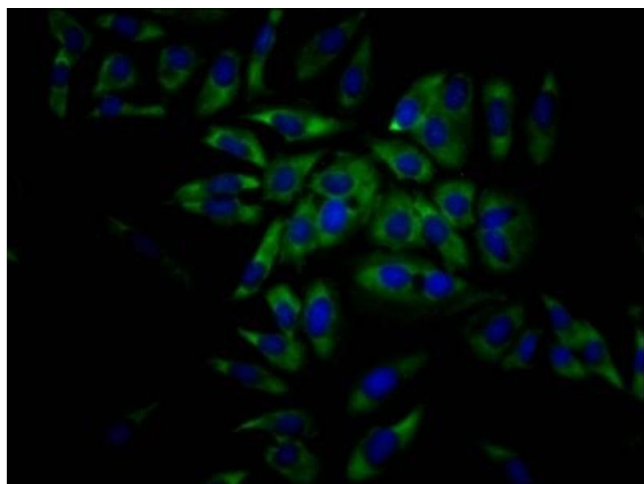
Buffer: Rabbit IgG in phosphate buffered saline, pH 7.4, 150 mM NaCl, 0.02 % sodium azide and 50 % glycerol.

Preservative: Sodium azide

Precaution of Use: This product contains Sodium azide: a POISONOUS AND HAZARDOUS SUBSTANCE which should be handled by trained staff only.

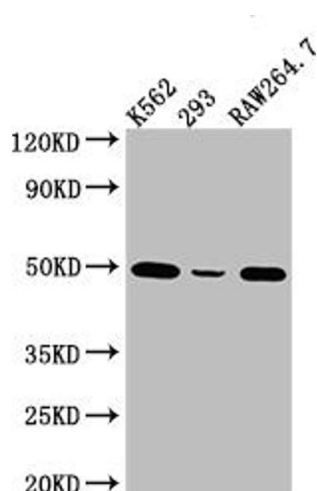
Storage: -20 °C, -80 °C

Storage Comment: Upon receipt, store at -20°C or -80°C. Avoid repeated freeze.



Immunofluorescence

Image 1. Immunofluorescence staining of HeLa Cells with ABIN7127468 at 1:50, counter-stained with DAPI. The cells were fixed in 4 % formaldehyde, permeated by 0.2 % TritonX-100, and blocked in 10 % normal Goat Serum. The cells were then incubated with the antibody overnight at 4 °C. Nuclear DNA was labeled in blue with DAPI. The secondary antibody was FITC-conjugated AffiniPure Goat Anti-Rabbit IgG (H+L).



Western Blotting

Image 2. Western Blot Positive WB detected in: K562 whole cell lysate, 293 whole cell lysate, RAW264.7 whole cell lysate. All lanes: eIF4A1 Antibody at 1:1000. Secondary Goat polyclonal to rabbit IgG at 1/50000 dilution. Predicted band size: 40, 47 kDa. Observed band size: 50 kDa.