

Datasheet for ABIN7127486

Recombinant anti-FDFT1 antibody**3** Images[Go to Product page](#)

Overview

Quantity:	100 µL
Target:	FDFT1
Reactivity:	Human
Host:	Rabbit
Antibody Type:	Recombinant Antibody
Clonality:	Monoclonal
Conjugate:	This FDFT1 antibody is un-conjugated
Application:	Western Blotting (WB), Immunohistochemistry (IHC), ELISA

Product Details

Immunogen:	A synthesized peptide derived from human FDFT1
Clone:	10H12
Isotype:	IgG
Cross-Reactivity:	Human
Purification:	Affinity-chromatography

Target Details

Target:	FDFT1
Alternative Name:	FDFT1 (FDFT1 Products)
Background:	Background: endoplasmic reticulum, endoplasmic reticulum membrane, integral component of

Target Details

membrane, farnesyl-diphosphate farnesyltransferase activity, squalene synthase activity, cholesterol biosynthetic process, farnesyl diphosphate metabolic process, regulation of cholesterol biosynthetic process, regulation of lipid metabolic process, steroid biosynthetic process

Aliases: Squalene synthase (SQS) (SS) (EC 2.5.1.21) (FPP:FPP farnesyltransferase) (Farnesyl-diphosphate farnesyltransferase), FDFT1

UniProt: [P37268](#)

Pathways: [Regulation of Lipid Metabolism by PPARalpha](#)

Application Details

Application Notes: Recommended dilution: WB:1:500-1:5000, IHC:1:50-1:200,

Restrictions: For Research Use only

Handling

Format: Liquid

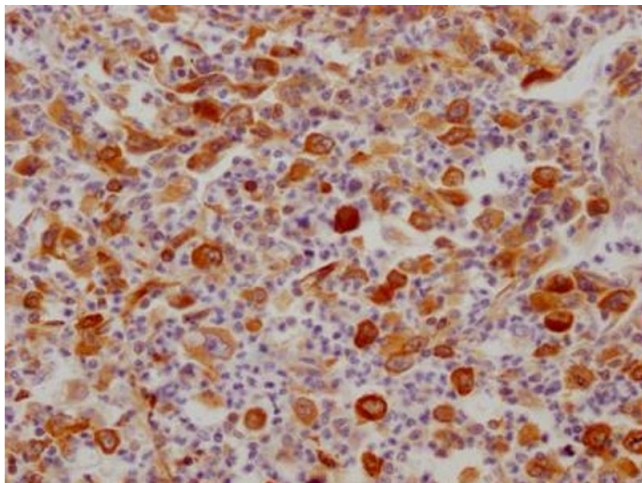
Buffer: Rabbit IgG in phosphate buffered saline, pH 7.4, 150 mM NaCl, 0.02 % sodium azide and 50 % glycerol.

Preservative: Sodium azide

Precaution of Use: This product contains Sodium azide: a POISONOUS AND HAZARDOUS SUBSTANCE which should be handled by trained staff only.

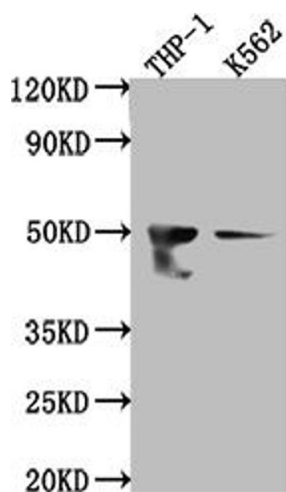
Storage: -20 °C,-80 °C

Storage Comment: Upon receipt, store at -20°C or -80°C. Avoid repeated freeze.



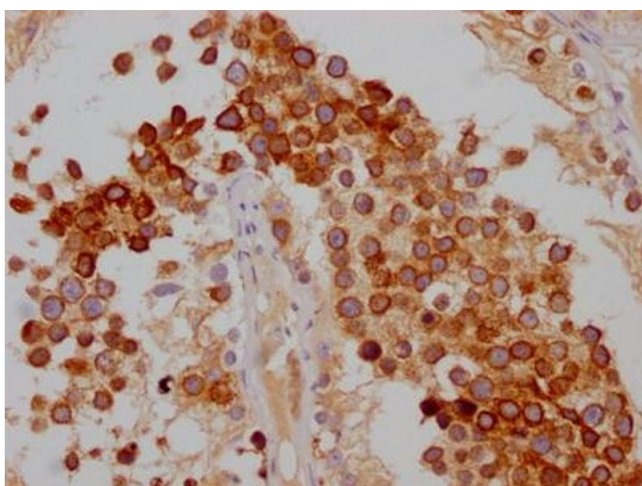
Immunohistochemistry

Image 1. IHC image of ABIN7127486 diluted at 1:100 and staining in paraffin-embedded human lung cancer performed on a Leica Bond™ system. After dewaxing and hydration, antigen retrieval was mediated by high pressure in a citrate buffer (pH 6.0). Section was blocked with 10 % normal goat serum 30 min at RT. Then primary antibody (1 % BSA) was incubated at 4 °C overnight. The primary is detected by a Goat anti-rabbit IgG polymer labeled by HRP and visualized using 0.05 % DAB.



Western Blotting

Image 2. Western Blot Positive WB detected in: THP-1 whole cell lysate, K562 whole cell lysate All lanes: FDFT1 antibody at 1:1000 Secondary Goat polyclonal to rabbit IgG at 1/50000 dilution Predicted band size: 49, 41, 39, 36, 44 kDa Observed band size: 50 kDa



Immunohistochemistry

Image 3. IHC image of ABIN7127486 diluted at 1:100 and staining in paraffin-embedded human testis tissue performed on a Leica Bond™ system. After dewaxing and hydration, antigen retrieval was mediated by high pressure in a citrate buffer (pH 6.0). Section was blocked with 10 % normal goat serum 30 min at RT. Then primary antibody (1 % BSA) was incubated at 4 °C overnight. The primary is detected by a Goat anti-rabbit IgG polymer labeled by HRP and visualized using 0.05 % DAB.