

Datasheet for ABIN7127493

Recombinant anti-Filamin A antibody[Go to Product page](#)**1** Image

Overview

| | |
|----------------|--|
| Quantity: | 100 µL |
| Target: | Filamin A (FLNA) |
| Reactivity: | Human |
| Host: | Rabbit |
| Antibody Type: | Recombinant Antibody |
| Clonality: | Monoclonal |
| Conjugate: | This Filamin A antibody is un-conjugated |
| Application: | Immunohistochemistry (IHC), ELISA |

Product Details

| | |
|-------------------|--|
| Immunogen: | A synthesized peptide derived from human Filamin A |
| Clone: | 1B2 |
| Isotype: | IgG |
| Cross-Reactivity: | Human |
| Purification: | Affinity-chromatography |

Target Details

| | |
|-------------------|---|
| Target: | Filamin A (FLNA) |
| Alternative Name: | FLNA (FLNA Products) |
| Background: | Background: Promotes orthogonal branching of actin filaments and links actin filaments to |

Target Details

membrane glycoproteins. Anchors various transmembrane proteins to the actin cytoskeleton and serves as a scaffold for a wide range of cytoplasmic signaling proteins. Interaction with FLNA may allow neuroblast migration from the ventricular zone into the cortical plate. Tethers cell surface-localized furin, modulates its rate of internalization and directs its intracellular trafficking (By similarity). Involved in ciliogenesis. Plays a role in cell-cell contacts and adherens junctions during the development of blood vessels, heart and brain organs. Plays a role in platelets morphology through interaction with SYK that regulates ITAM- and ITAM-like-containing receptor signaling, resulting in by platelet cytoskeleton organization maintenance (By similarity).

Aliases: Filamin-A (FLN-A) (Actin-binding protein 280) (ABP-280) (Alpha-filamin) (Endothelial actin-binding protein) (Filamin-1) (Non-muscle filamin), FLNA, FLN FLN1

UniProt: [P21333](#)

Pathways: [TCR Signaling](#), [Maintenance of Protein Location](#)

Application Details

Application Notes: Recommended dilution: IHC:1:50-1:200,

Restrictions: For Research Use only

Handling

Format: Liquid

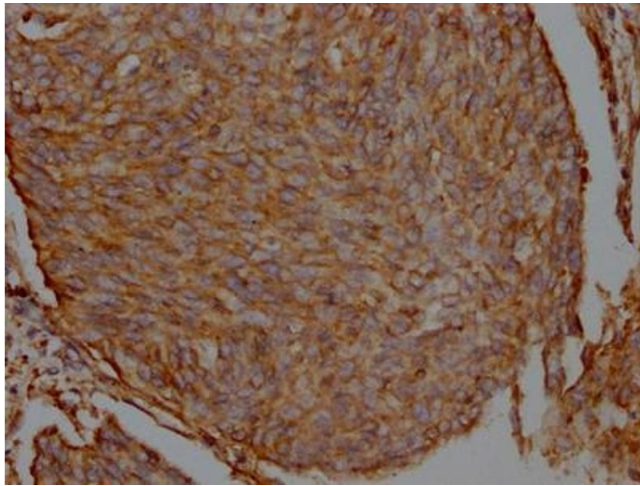
Buffer: Rabbit IgG in phosphate buffered saline, pH 7.4, 150 mM NaCl, 0.02 % sodium azide and 50 % glycerol.

Preservative: Sodium azide

Precaution of Use: This product contains Sodium azide: a POISONOUS AND HAZARDOUS SUBSTANCE which should be handled by trained staff only.

Storage: -20 °C,-80 °C

Storage Comment: Upon receipt, store at -20°C or -80°C. Avoid repeated freeze.



Immunohistochemistry

Image 1. IHC image of ABIN7127493 diluted at 1:100 and staining in paraffin-embedded human cervical cancer performed on a Leica Bond™ system. After dewaxing and hydration, antigen retrieval was mediated by high pressure in a citrate buffer (pH 6.0). Section was blocked with 10 % normal goat serum 30 min at RT. Then primary antibody (1 % BSA) was incubated at 4 °C overnight. The primary is detected by a Goat anti-rabbit IgG polymer labeled by HRP and visualized using 0.05 % DAB.