



Datasheet for ABIN7127496

## Recombinant anti-c-FOS antibody



[Go to Product page](#)

### 5 Images

#### Overview

Quantity:	100 µL
Target:	c-FOS (c-Fos)
Reactivity:	Human
Host:	Rabbit
Antibody Type:	Recombinant Antibody
Clonality:	Monoclonal
Conjugate:	This c-FOS antibody is un-conjugated
Application:	Western Blotting (WB), ELISA, Immunohistochemistry (IHC), Flow Cytometry (FACS), Immunofluorescence (IF)

#### Product Details

Immunogen:	A synthesized peptide derived from human FOS
Clone:	14C10
Isotype:	IgG
Cross-Reactivity:	Human, Mouse
Purification:	Affinity-chromatography

#### Target Details

Target:	c-FOS (c-Fos)
Alternative Name:	FOS ( <a href="#">c-Fos Products</a> )

## Target Details

---

**Background:** Background: Nuclear phosphoprotein which forms a tight but non-covalently linked complex with the JUN/AP-1 transcription factor. In the heterodimer, FOS and JUN/AP-1 basic regions each seems to interact with symmetrical DNA half sites. On TGF-beta activation, forms a multimeric SMAD3/SMAD4/JUN/FOS complex at the AP1/SMAD-binding site to regulate TGF-beta-mediated signaling. Has a critical function in regulating the development of cells destined to form and maintain the skeleton. It is thought to have an important role in signal transduction, cell proliferation and differentiation. In growing cells, activates phospholipid synthesis, possibly by activating CDS1 and PI4K2A. This activity requires Tyr-dephosphorylation and association with the endoplasmic reticulum.

Aliases: Proto-oncogene c-Fos, Cellular oncogene fos, G0/G1 switch regulatory protein 7, FOS, G0S7

---

**UniProt:** [P01100](#)

---

**Pathways:** [S100 Proteins](#)

## Application Details

---

**Application Notes:** Recommended dilution: WB:1:500-1:5000, IHC:1:50-1:200, IF:1:20-1:200,

---

**Restrictions:** For Research Use only

## Handling

---

**Format:** Liquid

---

**Buffer:** Rabbit IgG in phosphate buffered saline , pH 7.4, 150 mM NaCl, 0.02 % sodium azide and 50 % glycerol.

---

**Preservative:** Sodium azide

---

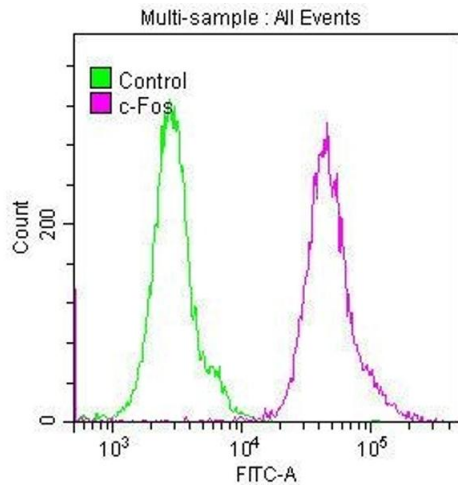
**Precaution of Use:** This product contains Sodium azide: a POISONOUS AND HAZARDOUS SUBSTANCE which should be handled by trained staff only.

---

**Storage:** -20 °C,-80 °C

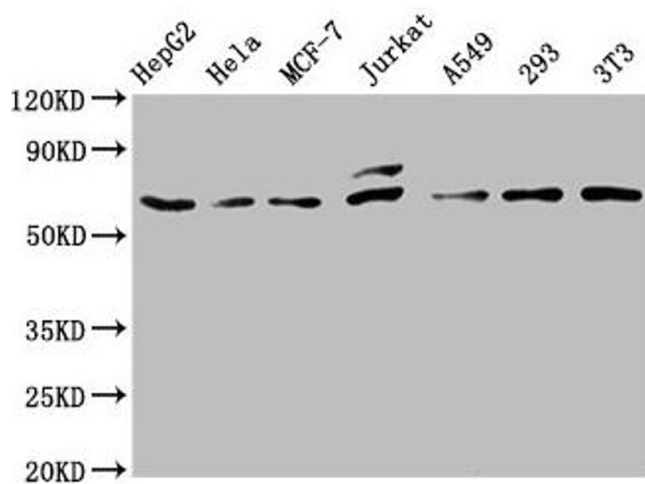
---

**Storage Comment:** Upon receipt, store at -20°C or -80°C. Avoid repeated freeze.



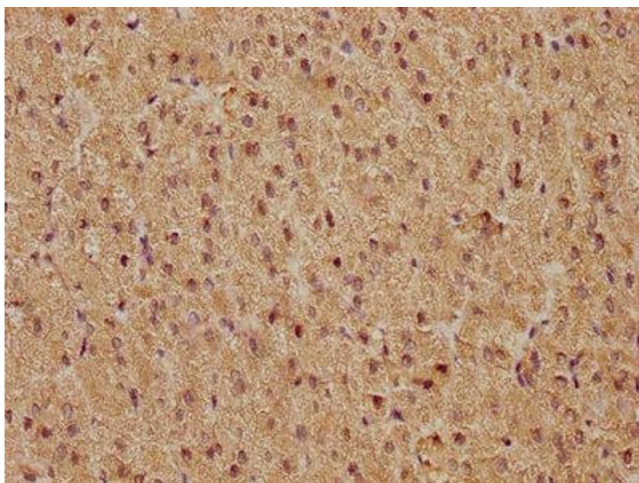
### Flow Cytometry

**Image 1.** Overlay histogram showing HeLa cells stained with ABIN7127496 (red line) at 1:50. The cells were fixed with 70 % Ethylalcohol (18h) and then permeabilized with 0.3 % Triton X-100 for 2 min. The cells were then incubated in 1x PBS /10 % normal goat serum to block non-specific protein-protein interactions followed by primary antibody for 1 h at 4 °C. The secondary antibody used was FITC goat anti-rabbit IgG (H+L) at 1/200 dilution for 1 h at 4 °C. Control antibody (green line) was used under the same conditions. Acquisition of >10,000 events was performed.



### Western Blotting

**Image 2.** Western Blot Positive WB detected in: HepG2 whole cell lysate, HeLa whole cell lysate, MCF-7 whole cell lysate, Jurkat whole cell lysate, A549 whole cell lysate, 293 whole cell lysate, NIH/3T3 whole cell lysate All lanes: c-FOS antibody at 0.81 µg/mL Secondary Goat polyclonal to rabbit IgG at 1/50000 dilution Predicted band size: 41, 29, 37 KDa Observed band size: 62 KDa



### Immunohistochemistry

**Image 3.** IHC image of ABIN7127496 diluted at 1:81 and staining in paraffin-embedded human adrenal gland tissue performed on a Leica Bond™ system. After dewaxing and hydration, antigen retrieval was mediated by high pressure in a citrate buffer (pH 6.0). Section was blocked with 10 % normal goat serum 30 min at RT. Then primary antibody (1 % BSA) was incubated at 4 °C overnight. The primary is detected by a biotinylated secondary antibody and visualized using an HRP conjugated SP system.

Please check the [product details page](#) for more images. Overall 5 images are available for ABIN7127496.