

Datasheet for ABIN7127500

**Recombinant anti-FOXO3 antibody**

## 4 Images

[Go to Product page](#)

## Overview

Quantity:	100 µL
Target:	FOXO3
Reactivity:	Human
Host:	Rabbit
Antibody Type:	Recombinant Antibody
Clonality:	Monoclonal
Conjugate:	This FOXO3 antibody is un-conjugated
Application:	Western Blotting (WB), ELISA, Immunohistochemistry (IHC), Immunofluorescence (IF)

## Product Details

Immunogen:	A synthesized peptide derived from human FOXO3
Clone:	1E2
Isotype:	IgG
Cross-Reactivity:	Human
Purification:	Affinity-chromatography

## Target Details

Target:	FOXO3
Alternative Name:	FOXO3 ( <a href="#">FOXO3 Products</a> )
Background:	Background: Transcriptional activator which triggers apoptosis in the absence of survival

## Target Details

factors, including neuronal cell death upon oxidative stress (PubMed:10102273, PubMed:16751106). Recognizes and binds to the DNA sequence 5'-[AG]TAAA[TC]A-3' (PubMed:21329882). Participates in post-transcriptional regulation of MYC: following phosphorylation by MAPKAPK5, promotes induction of miR-34b and miR-34c expression, 2 post-transcriptional regulators of MYC that bind to the 3'UTR of MYC transcript and prevent its translation (PubMed:21329882). In response to metabolic stress, translocates into the mitochondria where it promotes mtDNA transcription (PubMed:23283301).  
Aliases: Forkhead box protein O3, AF6q21 protein, FOXO3

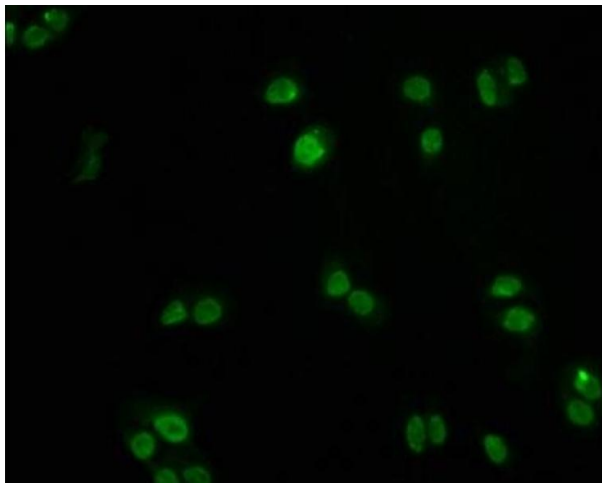
UniProt:	<a href="#">O43524</a>
Pathways:	<a href="#">Cell Division Cycle</a> , <a href="#">Fc-epsilon Receptor Signaling Pathway</a> , <a href="#">EGFR Signaling Pathway</a> , <a href="#">Neurotrophin Signaling Pathway</a> , <a href="#">Carbohydrate Homeostasis</a>

## Application Details

Application Notes:	Recommended dilution: WB:1:500-1:5000, IHC:1:50-1:200, IF:1:20-1:200,
Restrictions:	For Research Use only

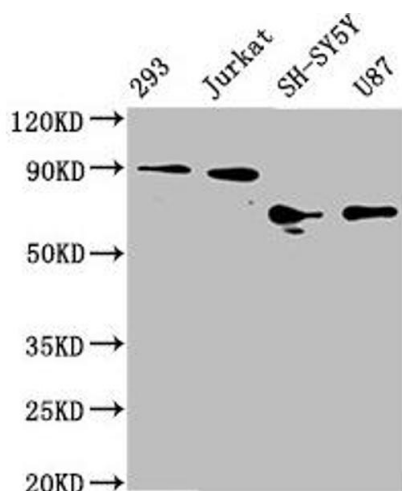
## Handling

Format:	Liquid
Buffer:	Rabbit IgG in phosphate buffered saline , pH 7.4, 150 mM NaCl, 0.02 % sodium azide and 50 % glycerol.
Preservative:	Sodium azide
Precaution of Use:	This product contains Sodium azide: a POISONOUS AND HAZARDOUS SUBSTANCE which should be handled by trained staff only.
Storage:	-20 °C,-80 °C
Storage Comment:	Upon receipt, store at -20°C or -80°C. Avoid repeated freeze.



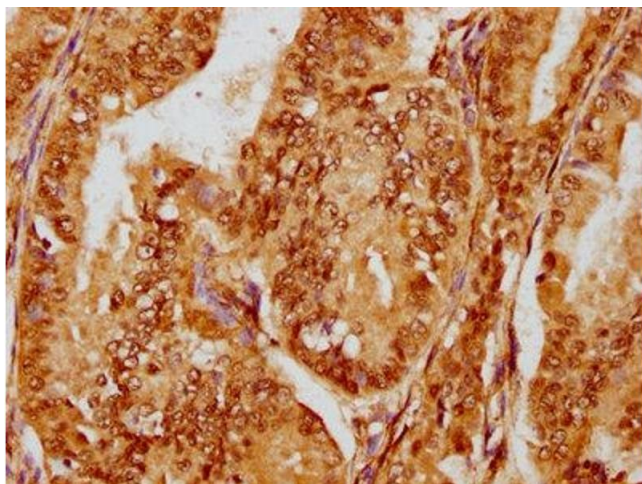
### Immunofluorescence

**Image 1.** Immunofluorescence staining of PC3 cells with ABIN7127500 at 1:60, counter-stained with DAPI. The cells were fixed in 4 % formaldehyde, permeabilized using 0.2 % Triton X-100 and blocked in 10 % normal Goat Serum. The cells were then incubated with the antibody overnight at 4 °C. The secondary antibody was Alexa Fluor 488-conjugated AffiniPure Goat Anti-Rabbit IgG (H+L).



### Western Blotting

**Image 2.** Western Blot Positive WB detected in: 293 whole cell lysate, Jurkat whole cell lysate, SH-SY5Y whole cell lysate, U87 whole cell lysate. All lanes: FOXO3A antibody at 1.8 µg/mL. Secondary Goat polyclonal to rabbit IgG at 1/50000 dilution. Predicted band size: 72, 49 kDa. Observed band size: 72-90 kDa.



### Immunohistochemistry

**Image 3.** IHC image of ABIN7127500 diluted at 1:180 and staining in paraffin-embedded human endometrial cancer performed on a Leica Bond™ system. After dewaxing and hydration, antigen retrieval was mediated by high pressure in a citrate buffer (pH 6.0). Section was blocked with 10 % normal goat serum 30 min at RT. Then primary antibody (1 % BSA) was incubated at 4 °C overnight. The primary is detected by a biotinylated secondary antibody and visualized using an HRP conjugated SP system.

Please check the [product details page](#) for more images. Overall 4 images are available for ABIN7127500.