

Datasheet for ABIN7127508

**Recombinant anti-Galectin 3 antibody**

## 4 Images

[Go to Product page](#)

## Overview

Quantity:	100 µL
Target:	Galectin 3 (LGALS3)
Reactivity:	Human
Host:	Rabbit
Antibody Type:	Recombinant Antibody
Clonality:	Monoclonal
Conjugate:	This Galectin 3 antibody is un-conjugated
Application:	Western Blotting (WB), Immunohistochemistry (IHC), ELISA, Immunofluorescence (IF), Immunoprecipitation (IP)

## Product Details

Immunogen:	A synthesized peptide derived from human Galectin 3
Clone:	4E1
Isotype:	IgG
Cross-Reactivity:	Human
Purification:	Affinity-chromatography

## Target Details

Target:	Galectin 3 (LGALS3)
Alternative Name:	LGALS3 ( <a href="#">LGALS3 Products</a> )

## Target Details

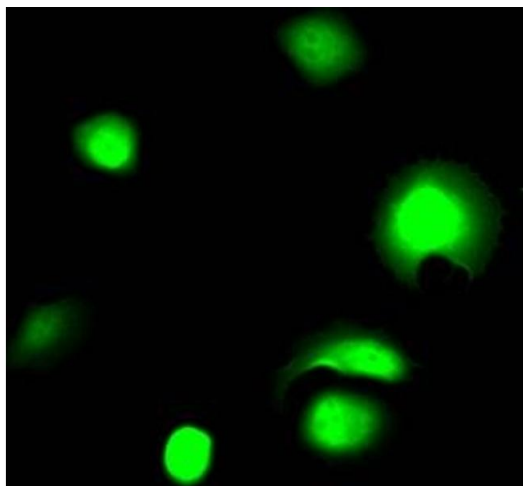
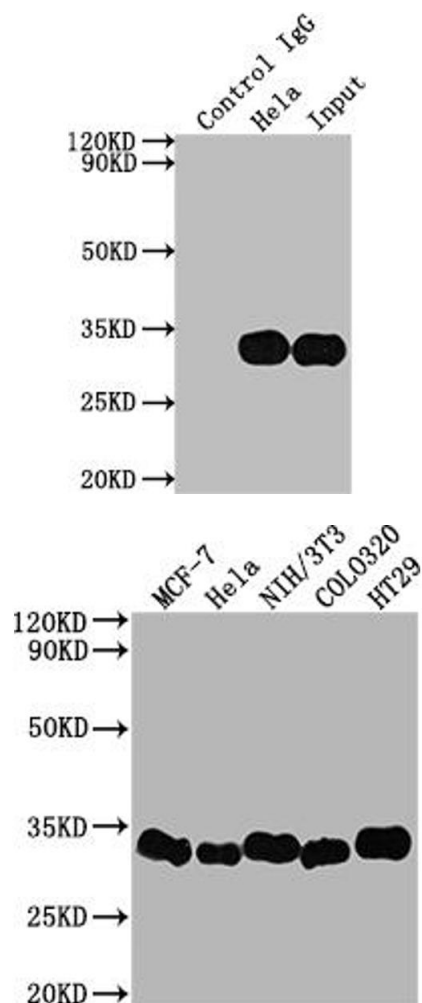
Target Type:	Chemical
Background:	<p>Background: Galactose-specific lectin which binds IgE. May mediate with the alpha-3, beta-1 integrin the stimulation by CSPG4 of endothelial cells migration. Together with DMBT1, required for terminal differentiation of columnar epithelial cells during early embryogenesis (By similarity). In the nucleus: acts as a pre-mRNA splicing factor. Involved in acute inflammatory responses including neutrophil activation and adhesion, chemoattraction of monocytes macrophages, opsonization of apoptotic neutrophils, and activation of mast cells.</p> <p>Aliases: Galectin-3 (Gal-3) (35 kDa lectin) (Carbohydrate-binding protein 35) (CBP 35) (Galactose-specific lectin 3) (Galactoside-binding protein) (GALBP) (IgE-binding protein) (L-31) (Laminin-binding protein) (Lectin L-29) (Mac-2 antigen), LGALS3, MAC2</p>
UniProt:	<a href="#">P17931</a>
Pathways:	<a href="#">RTK Signaling</a>

## Application Details

Application Notes:	Recommended dilution: WB:1:500-1:5000, IHC:1:50-1:200, IF:1:20-1:200, IP:1:200-1:1000,
Restrictions:	For Research Use only

## Handling

Format:	Liquid
Buffer:	Rabbit IgG in phosphate buffered saline, pH 7.4, 150 mM NaCl, 0.02 % sodium azide and 50 % glycerol.
Preservative:	Sodium azide
Precaution of Use:	This product contains Sodium azide: a POISONOUS AND HAZARDOUS SUBSTANCE which should be handled by trained staff only.
Storage:	-20 °C, -80 °C
Storage Comment:	Upon receipt, store at -20°C or -80°C. Avoid repeated freeze.



### Western Blotting

**Image 1.** Immunoprecipitating LGALS3 in Hela whole cell lysate Lane 1: Rabbit control IgG instead of ABIN7127508 in Hela whole cell lysate. For western blotting, a HRP-conjugated Protein G antibody was used as the secondary antibody (1/2000) Lane 2: ABIN7127508(2 µg)+ Hela whole cell lysate(500 µg) Lane 3: Hela whole cell lysate (10 µg)

### Western Blotting

**Image 2.** Western Blot Positive WB detected in: MCF-7 whole cell lysate, Hela whole cell lysate, NIH/3T3 whole cell lysate, Colo320 whole cell lysate, HT29 whole cell lysate All lanes: Galectin 3 antibody at 1:2000 Secondary Goat polyclonal to rabbit IgG at 1/50000 dilution Predicted band size: 27 kDa Observed band size: 31 kDa

### Immunofluorescence

**Image 3.** Immunofluorescence staining of MCF7 Cells with ABIN7127508 at 1:50, counter-stained with DAPI. The cells were fixed in 4 % formaldehyde, permeated by 0.2 % TritonX-100, and blocked in 10 % normal Goat Serum. The cells were then incubated with the antibody overnight at 4 °C. Nuclear DNA was labeled in blue with DAPI. The secondary antibody was FITC-conjugated AffiniPure Goat Anti-Rabbit IgG (H+L).

Please check the [product details page](#) for more images. Overall 4 images are available for ABIN7127508.