

Datasheet for ABIN7127518

Recombinant anti-GPA33 antibody[Go to Product page](#)**2** Images

Overview

Quantity:	100 µL
Target:	GPA33
Reactivity:	Human
Host:	Rabbit
Antibody Type:	Recombinant Antibody
Clonality:	Monoclonal
Conjugate:	This GPA33 antibody is un-conjugated
Application:	ELISA, Immunohistochemistry (IHC)

Product Details

Immunogen:	A synthesized peptide derived from human GPA33
Clone:	4H4
Isotype:	IgG
Cross-Reactivity:	Human
Purification:	Affinity-chromatography

Target Details

Target:	GPA33
Alternative Name:	GPA33 (GPA33 Products)
Background:	Background: May play a role in cell-cell recognition and signaling.

Target Details

Aliases: Cell surface A33 antigen (Glycoprotein A33), GPA33

UniProt: [Q99795](#)

Application Details

Application Notes: Recommended dilution: IHC:1:50-1:200,

Restrictions: For Research Use only

Handling

Format: Liquid

Buffer: Rabbit IgG in phosphate buffered saline, pH 7.4, 150 mM NaCl, 0.02 % sodium azide and 50 % glycerol.

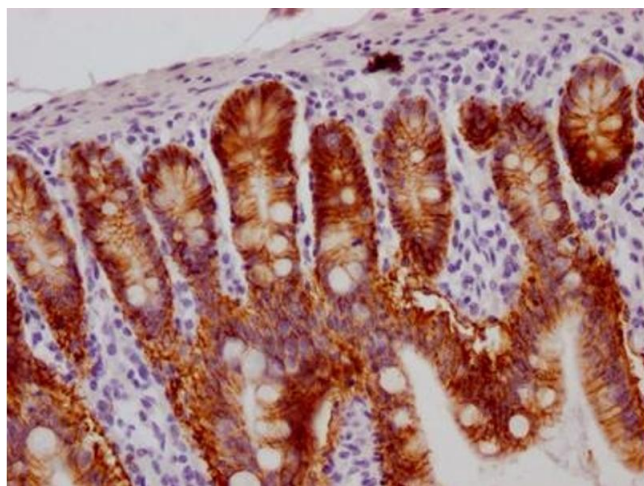
Preservative: Sodium azide

Precaution of Use: This product contains Sodium azide: a POISONOUS AND HAZARDOUS SUBSTANCE which should be handled by trained staff only.

Storage: -20 °C, -80 °C

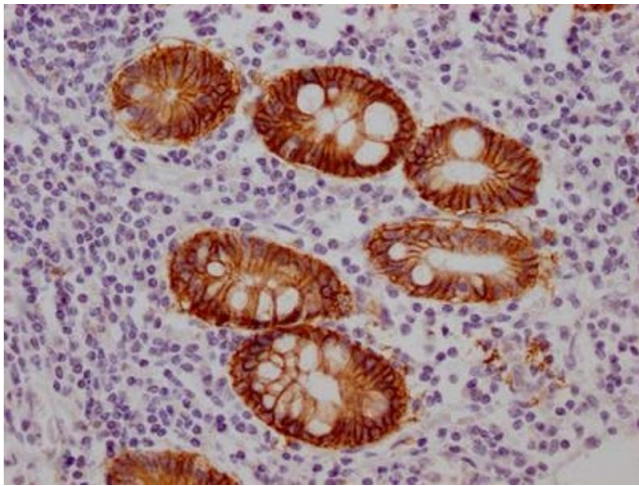
Storage Comment: Upon receipt, store at -20°C or -80°C. Avoid repeated freeze.

Images



Immunohistochemistry

Image 1. IHC image of ABIN7127518 diluted at 1:100 and staining in paraffin-embedded human small intestine tissue performed on a Leica Bond™ system. After dewaxing and hydration, antigen retrieval was mediated by high pressure in a citrate buffer (pH 6.0). Section was blocked with 10 % normal goat serum 30 min at RT. Then primary antibody (1 % BSA) was incubated at 4 °C overnight. The primary is detected by a Goat anti-rabbit IgG polymer labeled by HRP and visualized using 0.05 % DAB.



Immunohistochemistry

Image 2. IHC image of ABIN7127518 diluted at 1:100 and staining in paraffin-embedded human colon cancer performed on a Leica Bond™ system. After dewaxing and hydration, antigen retrieval was mediated by high pressure in a citrate buffer (pH 6.0). Section was blocked with 10 % normal goat serum 30 min at RT. Then primary antibody (1 % BSA) was incubated at 4 °C overnight. The primary is detected by a Goat anti-rabbit IgG polymer labeled by HRP and visualized using 0.05 % DAB.