

Datasheet for ABIN7127519

**Recombinant anti-Glypican 3 antibody**[Go to Product page](#)**2** Images

## Overview

Quantity:	100 µL
Target:	Glypican 3 (GPC3)
Reactivity:	Human
Host:	Rabbit
Antibody Type:	Recombinant Antibody
Clonality:	Monoclonal
Conjugate:	This Glypican 3 antibody is un-conjugated
Application:	Immunofluorescence (IF), Western Blotting (WB), ELISA

## Product Details

Immunogen:	A synthesized peptide derived from human GPC3
Clone:	4H11
Isotype:	IgG
Cross-Reactivity:	Human
Purification:	Affinity-chromatography

## Target Details

Target:	Glypican 3 (GPC3)
Alternative Name:	GPC3 ( <a href="#">GPC3 Products</a> )
Background:	Background: Cell surface proteoglycan that bears heparan sulfate. Inhibits the dipeptidyl

## Target Details

peptidase activity of DPP4. May be involved in the suppression/modulation of growth in the predominantly mesodermal tissues and organs. May play a role in the modulation of IGF2 interactions with its receptor and thereby modulate its function. May regulate growth and tumor predisposition.

Aliases: Glypican-3, GTR2-2, Intestinal protein OCI-5, MXR7, Secreted glypican-3, GPC3, OCI5

UniProt: [P51654](#)

Pathways: [Glycosaminoglycan Metabolic Process](#)

## Application Details

Application Notes: Recommended dilution: WB:1:500-1:5000, IF:1:20-1:200,

Restrictions: For Research Use only

## Handling

Format: Liquid

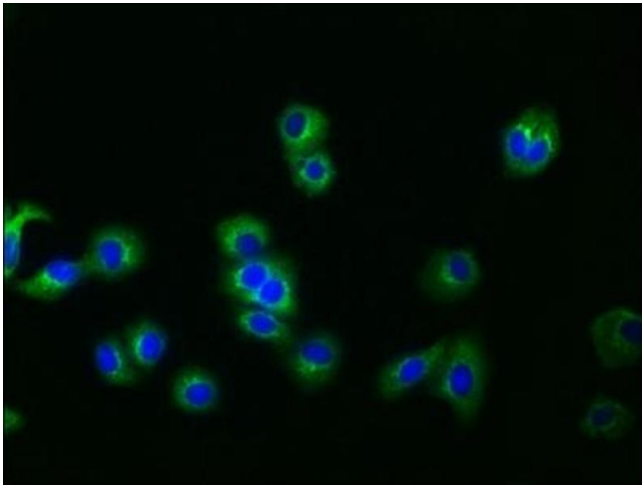
Buffer: Rabbit IgG in phosphate buffered saline , pH 7.4, 150 mM NaCl, 0.02 % sodium azide and 50 % glycerol.

Preservative: Sodium azide

Precaution of Use: This product contains Sodium azide: a POISONOUS AND HAZARDOUS SUBSTANCE which should be handled by trained staff only.

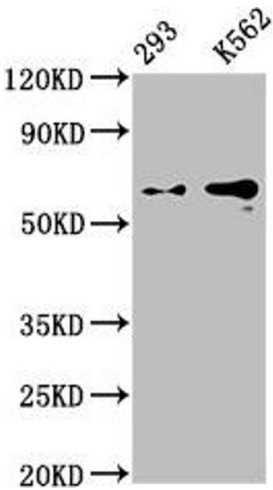
Storage: -20 °C,-80 °C

Storage Comment: Upon receipt, store at -20°C or -80°C. Avoid repeated freeze.



**Immunofluorescence**

**Image 1.** Immunofluorescence staining of HepG2 cells with ABIN7127519 at 1:30, counter-stained with DAPI. The cells were fixed in 4 % formaldehyde, permeabilized using 0.2 % Triton X-100 and blocked in 10 % normal Goat Serum. The cells were then incubated with the antibody overnight at 4 °C. The secondary antibody was Alexa Fluor 488-conjugated AffiniPure Goat Anti-Rabbit IgG (H+L).



**Western Blotting**

**Image 2.** Western Blot Positive WB detected in: 293 whole cell lysate, K562 whole cell lysate All lanes: GPC3 antibody at 0.9 µg/mL Secondary Goat polyclonal to rabbit IgG at 1/50000 dilution Predicted band size: 66, 60, 69 KDa Observed band size: 66 KDa