

Datasheet for ABIN7127521

Recombinant anti-GPX4 antibody[Go to Product page](#)**1** Image

Overview

Quantity:	100 µL
Target:	GPX4
Reactivity:	Human
Host:	Rabbit
Antibody Type:	Recombinant Antibody
Clonality:	Monoclonal
Conjugate:	This GPX4 antibody is un-conjugated
Application:	Immunohistochemistry (IHC), ELISA

Product Details

Immunogen:	A synthesized peptide derived from human GPX4
Clone:	9D4
Isotype:	IgG
Cross-Reactivity:	Human
Purification:	Affinity-chromatography

Target Details

Target:	GPX4
Alternative Name:	GPX4 (GPX4 Products)
Background:	Background: Protects cells against membrane lipid peroxidation and cell death. Required for

Target Details

normal sperm development and male fertility. Could play a major role in protecting mammals from the toxicity of ingested lipid hydroperoxides. Essential for embryonic development. Protects from radiation and oxidative damage. Essential for maturation and survival of photoreceptor cells. Plays a role in a primary T cell response to viral and parasitic infection by protecting T cells from ferroptosis, a cell death resulting from an iron-dependent accumulation of lipid reactive oxygen species, and by supporting T cell expansion.

Aliases: Phospholipid hydroperoxide glutathione peroxidase (PHGPx) (EC 1.11.1.12)
(Glutathione peroxidase 4) (GPx-4) (GSHPx-4), GPX4

UniProt: [P36969](#)

Application Details

Application Notes: Recommended dilution: IHC:1:50-1:200,

Restrictions: For Research Use only

Handling

Format: Liquid

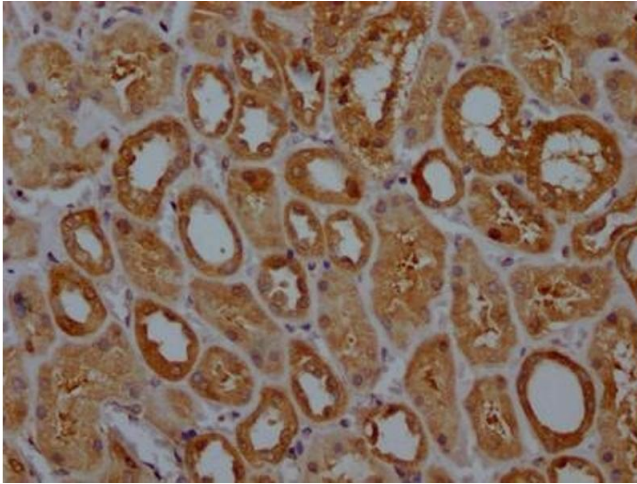
Buffer: Rabbit IgG in phosphate buffered saline, pH 7.4, 150 mM NaCl, 0.02 % sodium azide and 50 % glycerol.

Preservative: Sodium azide

Precaution of Use: This product contains Sodium azide: a POISONOUS AND HAZARDOUS SUBSTANCE which should be handled by trained staff only.

Storage: -20 °C,-80 °C

Storage Comment: Upon receipt, store at -20°C or -80°C. Avoid repeated freeze.



Immunohistochemistry

Image 1. IHC image of ABIN7127521 diluted at 1:100 and staining in paraffin-embedded human kidney tissue performed on a Leica Bond™ system. After dewaxing and hydration, antigen retrieval was mediated by high pressure in a citrate buffer (pH 6.0). Section was blocked with 10 % normal goat serum 30 min at RT. Then primary antibody (1 % BSA) was incubated at 4 °C overnight. The primary is detected by a Goat anti-rabbit IgG polymer labeled by HRP and visualized using 0.05 % DAB.