

Datasheet for ABIN7127523

**Recombinant anti-GZMB antibody**[Go to Product page](#)**2** Images

## Overview

Quantity:	100 µL
Target:	GZMB
Reactivity:	Human
Host:	Rabbit
Antibody Type:	Recombinant Antibody
Clonality:	Monoclonal
Conjugate:	This GZMB antibody is un-conjugated
Application:	Immunohistochemistry (IHC), ELISA, Immunofluorescence (IF)

## Product Details

Immunogen:	A synthesized peptide derived from human Granzyme B
Clone:	6A1
Isotype:	IgG
Cross-Reactivity:	Human
Purification:	Affinity-chromatography

## Target Details

Target:	GZMB
Alternative Name:	GZMB ( <a href="#">GZMB Products</a> )
Background:	Background: This enzyme is necessary for target cell lysis in cell-mediated immune responses.

## Target Details

---

It cleaves after Asp. Seems to be linked to an activation cascade of caspases (aspartate-specific cysteine proteases) responsible for apoptosis execution. Cleaves caspase-3, -7, -9 and 10 to give rise to active enzymes mediating apoptosis.

Aliases: Granzyme B (EC 3.4.21.79) (C11) (CTLA-1) (Cathepsin G-like 1) (CTSG1) (Cytotoxic T-lymphocyte proteinase 2) (Lymphocyte protease) (Fragmentin-2) (Granzyme-2) (Human lymphocyte protein) (HLP) (SECT) (T-cell serine protease 1-3E), GZMB, CGL1 CSPB CTLA1 GRB

UniProt: [P10144](#)

Pathways: [Apoptosis, Caspase Cascade in Apoptosis](#)

## Application Details

---

Application Notes: Recommended dilution: IHC:1:50-1:200, IF:1:20-1:200,

Restrictions: For Research Use only

## Handling

---

Format: Liquid

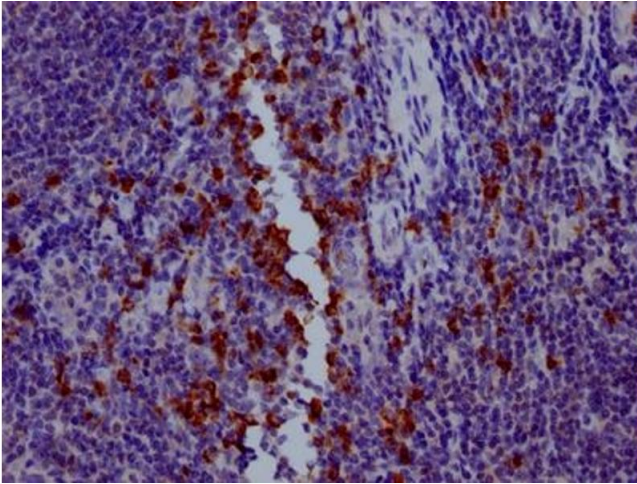
Buffer: Rabbit IgG in phosphate buffered saline, pH 7.4, 150 mM NaCl, 0.02 % sodium azide and 50 % glycerol.

Preservative: Sodium azide

Precaution of Use: This product contains Sodium azide: a POISONOUS AND HAZARDOUS SUBSTANCE which should be handled by trained staff only.

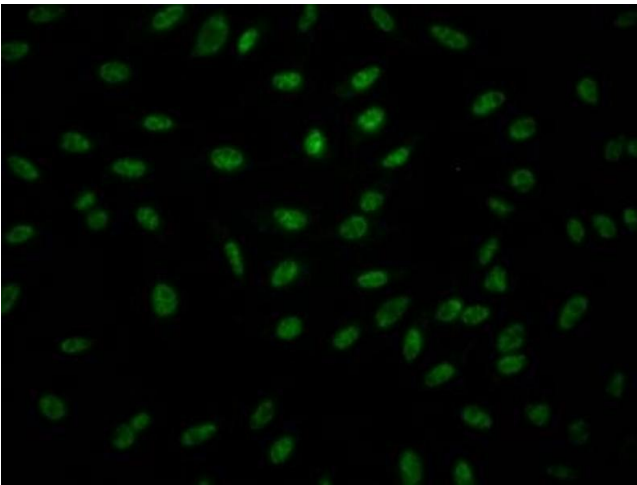
Storage: -20 °C,-80 °C

Storage Comment: Upon receipt, store at -20°C or -80°C. Avoid repeated freeze.



#### Immunohistochemistry

**Image 1.** IHC image of ABIN7127523 diluted at 1:100 and staining in paraffin-embedded human tonsil tissue performed on a Leica Bond™ system. After dewaxing and hydration, antigen retrieval was mediated by high pressure in a citrate buffer (pH 6.0). Section was blocked with 10 % normal goat serum 30 min at RT. Then primary antibody (1 % BSA) was incubated at 4 °C overnight. The primary is detected by a Goat anti-rabbit IgG polymer labeled by HRP and visualized using 0.05 % DAB.



#### Immunofluorescence

**Image 2.** Immunofluorescence staining of HeLa Cells with ABIN7127523 at 1:50, counter-stained with DAPI. The cells were fixed in 4 % formaldehyde, permeated by 0.2 % TritonX-100, and blocked in 10 % normal Goat Serum. The cells were then incubated with the antibody overnight at 4 °C. Nuclear DNA was labeled in blue with DAPI. The secondary antibody was FITC-conjugated AffiniPure Goat Anti-Rabbit IgG (H+L).