

Datasheet for ABIN7127524

Recombinant anti-GRB2 antibody**2** Images[Go to Product page](#)

Overview

Quantity:	100 µL
Target:	GRB2
Reactivity:	Human
Host:	Rabbit
Antibody Type:	Recombinant Antibody
Clonality:	Monoclonal
Conjugate:	This GRB2 antibody is un-conjugated
Application:	Western Blotting (WB), ELISA, Immunohistochemistry (IHC)

Product Details

Immunogen:	A synthesized peptide derived from human GRB2
Clone:	6E1
Isotype:	IgG
Cross-Reactivity:	Human, Mouse, Rat
Purification:	Affinity-chromatography

Target Details

Target:	GRB2
Alternative Name:	GRB2 (GRB2 Products)
Background:	Background: Adapter protein that provides a critical link between cell surface growth factor

Target Details

receptors and the Ras signaling pathway.

Aliases: Growth factor receptor-bound protein 2 (Adapter protein GRB2) (Protein Ash)
(SH2/SH3 adapter GRB2), GRB2, ASH

UniProt: [P62993](#)

Pathways: [RTK Signaling](#), [TCR Signaling](#), [Fc-epsilon Receptor Signaling Pathway](#), [EGFR Signaling Pathway](#), [Neurotrophin Signaling Pathway](#), [Regulation of Actin Filament Polymerization](#), [Hepatitis C](#), [Signaling Events mediated by VEGFR1 and VEGFR2](#), [Signaling of Hepatocyte Growth Factor Receptor](#), [EGFR Downregulation](#)

Application Details

Application Notes: Recommended dilution: WB:1:500-1:5000, IHC:1:50-1:200,

Restrictions: For Research Use only

Handling

Format: Liquid

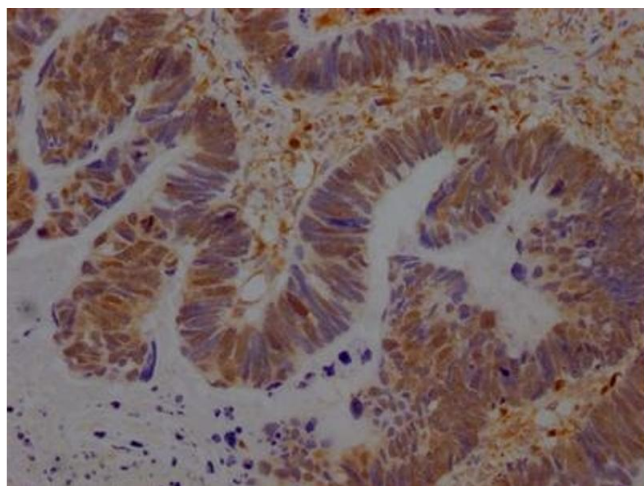
Buffer: Rabbit IgG in phosphate buffered saline, pH 7.4, 150 mM NaCl, 0.02 % sodium azide and 50 % glycerol.

Preservative: Sodium azide

Precaution of Use: This product contains Sodium azide: a POISONOUS AND HAZARDOUS SUBSTANCE which should be handled by trained staff only.

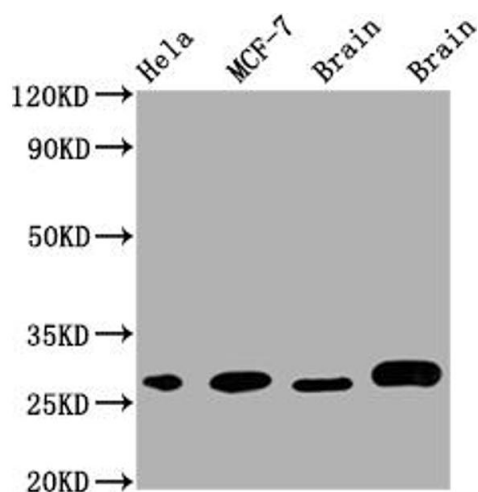
Storage: -20 °C, -80 °C

Storage Comment: Upon receipt, store at -20°C or -80°C. Avoid repeated freeze.



Immunohistochemistry

Image 1. IHC image of ABIN7127524 diluted at 1:100 and staining in paraffin-embedded human ovarian cancer performed on a Leica Bond™ system. After dewaxing and hydration, antigen retrieval was mediated by high pressure in a citrate buffer (pH 6.0). Section was blocked with 10 % normal goat serum 30 min at RT. Then primary antibody (1 % BSA) was incubated at 4 °C overnight. The primary is detected by a Goat anti-rabbit IgG polymer labeled by HRP and visualized using 0.05 % DAB.



Western Blotting

Image 2. Western Blot Positive WB detected in: HeLa whole cell lysate, MCF-7 whole cell lysate, Mouse Brain whole cell lysate, Rat Brain whole cell lysate All lanes: GRB2 antibody at 1:1000 Secondary Goat polyclonal to rabbit IgG at 1/50000 dilution Predicted band size: 26, 21 kDa Observed band size: 28 kDa