

Datasheet for ABIN7127527

Recombinant anti-Growth Hormone 1 antibody[Go to Product page](#)**1** Image

Overview

Quantity:	100 µL
Target:	Growth Hormone 1 (GH1)
Reactivity:	Human
Host:	Rabbit
Antibody Type:	Recombinant Antibody
Clonality:	Monoclonal
Conjugate:	This Growth Hormone 1 antibody is un-conjugated
Application:	Immunohistochemistry (IHC), ELISA

Product Details

Immunogen:	A synthesized peptide derived from human Growth Hormone
Clone:	5E9
Isotype:	IgG
Cross-Reactivity:	Human
Purification:	Affinity-chromatography

Target Details

Target:	Growth Hormone 1 (GH1)
Alternative Name:	GH1 (GH1 Products)
Background:	Background: Plays an important role in growth control. Its major role in stimulating body growth

Target Details

is to stimulate the liver and other tissues to secrete IGF-1. It stimulates both the differentiation and proliferation of myoblasts. It also stimulates amino acid uptake and protein synthesis in muscle and other tissues.

Aliases: Somatotropin (Growth hormone) (GH) (GH-N) (Growth hormone 1) (Pituitary growth hormone), GH1

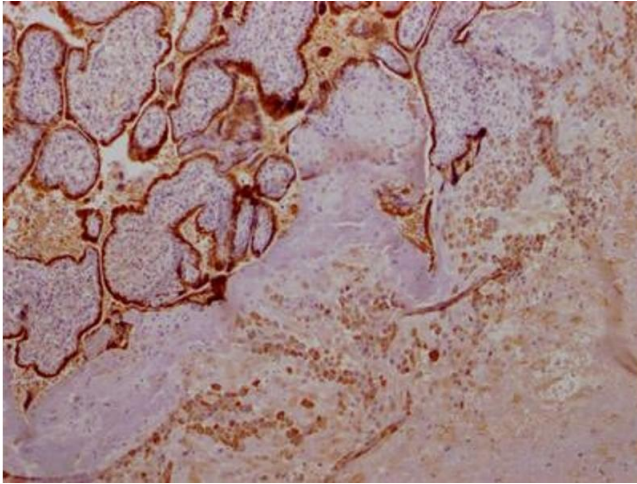
UniProt:	P01241
Pathways:	NF-kappaB Signaling , JAK-STAT Signaling , Intracellular Steroid Hormone Receptor Signaling Pathway , Peptide Hormone Metabolism , Regulation of Intracellular Steroid Hormone Receptor Signaling , Regulation of Hormone Metabolic Process , Response to Growth Hormone Stimulus , Regulation of Hormone Biosynthetic Process

Application Details

Application Notes:	Recommended dilution: IHC:1:50-1:200,
Restrictions:	For Research Use only

Handling

Format:	Liquid
Buffer:	Rabbit IgG in phosphate buffered saline, pH 7.4, 150 mM NaCl, 0.02 % sodium azide and 50 % glycerol.
Preservative:	Sodium azide
Precaution of Use:	This product contains Sodium azide: a POISONOUS AND HAZARDOUS SUBSTANCE which should be handled by trained staff only.
Storage:	-20 °C,-80 °C
Storage Comment:	Upon receipt, store at -20°C or -80°C. Avoid repeated freeze.



Immunohistochemistry

Image 1. IHC image of ABIN7127527 diluted at 1:100 and staining in paraffin-embedded human placenta tissue performed on a Leica Bond™ system. After dewaxing and hydration, antigen retrieval was mediated by high pressure in a citrate buffer (pH 6.0). Section was blocked with 10 % normal goat serum 30 min at RT. Then primary antibody (1 % BSA) was incubated at 4 °C overnight. The primary is detected by a Goat anti-rabbit IgG polymer labeled by HRP and visualized using 0.05 % DAB.