

Datasheet for ABIN7127532

Recombinant anti-GSTP1 antibody[Go to Product page](#)**2** Images

Overview

Quantity:	100 µL
Target:	GSTP1
Reactivity:	Human
Host:	Rabbit
Antibody Type:	Recombinant Antibody
Clonality:	Monoclonal
Conjugate:	This GSTP1 antibody is un-conjugated
Application:	Western Blotting (WB), ELISA, Immunohistochemistry (IHC)

Product Details

Immunogen:	A synthesized peptide derived from human GST3 / GST pi
Clone:	8F6
Isotype:	IgG
Cross-Reactivity:	Human, Mouse, Rat
Purification:	Affinity-chromatography

Target Details

Target:	GSTP1
Alternative Name:	GSTP1 (GSTP1 Products)
Background:	Background: Conjugation of reduced glutathione to a wide number of exogenous and

Target Details

endogenous hydrophobic electrophiles. Regulates negatively CDK5 activity via p25/p35 translocation to prevent neurodegeneration.

Aliases: Glutathione S-transferase P (EC 2.5.1.18) (GST class-pi) (GSTP1-1), GSTP1, FAEES3
GST3

UniProt: [P09211](#)

Pathways: [Cellular Response to Molecule of Bacterial Origin](#)

Application Details

Application Notes: Recommended dilution: WB:1:500-1:5000, IHC:1:50-1:200,

Restrictions: For Research Use only

Handling

Format: Liquid

Buffer: Rabbit IgG in phosphate buffered saline, pH 7.4, 150 mM NaCl, 0.02 % sodium azide and 50 % glycerol.

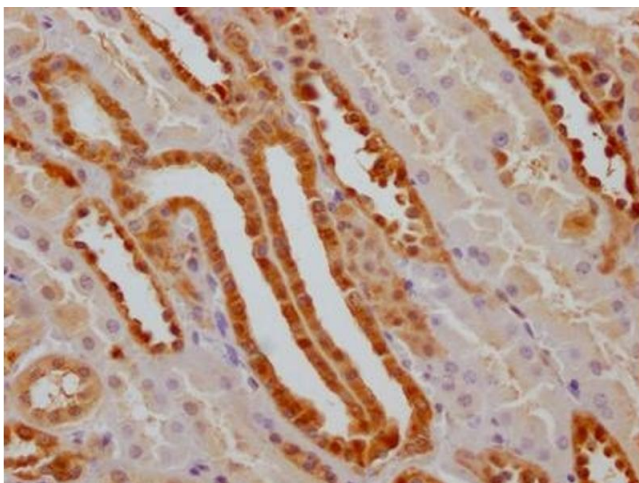
Preservative: Sodium azide

Precaution of Use: This product contains Sodium azide: a POISONOUS AND HAZARDOUS SUBSTANCE which should be handled by trained staff only.

Storage: -20 °C,-80 °C

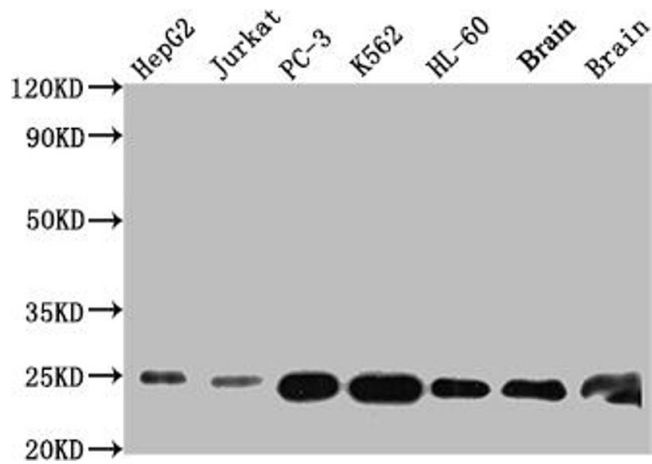
Storage Comment: Upon receipt, store at -20°C or -80°C. Avoid repeated freeze.

Images



Immunohistochemistry

Image 1. IHC image of ABIN7127532 diluted at 1:100 and staining in paraffin-embedded human kidney tissue performed on a Leica Bond™ system. After dewaxing and hydration, antigen retrieval was mediated by high pressure in a citrate buffer (pH 6.0). Section was blocked with 10 % normal goat serum 30 min at RT. Then primary antibody (1 % BSA) was incubated at 4 °C overnight. The primary is detected by a Goat anti-rabbit IgG polymer labeled by HRP



and visualized using 0.05 % DAB.

Western Blotting

Image 2. Western Blot Positive WB detected in: HepG2 whole cell lysate, Jurkat whole cell lysate, PC-3 whole cell lysate, K562 whole cell lysate, HL-60 whole cell lysate, Mouse Brain whole cell lysate, Rat Brain whole cell lysate All lanes: GSTP1 antibody at 1:1000 Secondary Goat polyclonal to rabbit IgG at 1/50000 dilution Predicted band size: 24 kDa Observed band size: 24 kDa