



[Go to Product page](#)

Datasheet for ABIN7127533

Recombinant anti-GSTO1 antibody

4 Images

Overview

Quantity:	100 µL
Target:	GSTO1
Reactivity:	Human
Host:	Rabbit
Antibody Type:	Recombinant Antibody
Clonality:	Monoclonal
Conjugate:	This GSTO1 antibody is un-conjugated
Application:	Western Blotting (WB), ELISA, Immunohistochemistry (IHC), Immunofluorescence (IF)

Product Details

Immunogen:	A synthesized peptide derived from human GSTO1
Clone:	2C7
Isotype:	IgG
Cross-Reactivity:	Human
Purification:	Affinity-chromatography

Target Details

Target:	GSTO1
Alternative Name:	GSTO1 (GSTO1 Products)
Background:	Background: Exhibits glutathione-dependent thiol transferase and dehydroascorbate reductase

Target Details

activities. Has S-(phenacyl)glutathione reductase activity. Has also glutathione S-transferase activity. Participates in the biotransformation of inorganic arsenic and reduces monomethylarsonic acid (MMA) and dimethylarsonic acid.

Aliases: Glutathione S-transferase omega-1, Glutathione S-transferase omega 1-1, GSTO 1-1, Glutathione-dependent dehydroascorbate reductase, GSTO1, GSTTLP28

UniProt: [P78417](#)

Pathways: [Myometrial Relaxation and Contraction](#), [Negative Regulation of Transporter Activity](#)

Application Details

Application Notes: Recommended dilution: WB:1:500-1:5000, IHC:1:50-1:200, IF:1:20-1:200,

Restrictions: For Research Use only

Handling

Format: Liquid

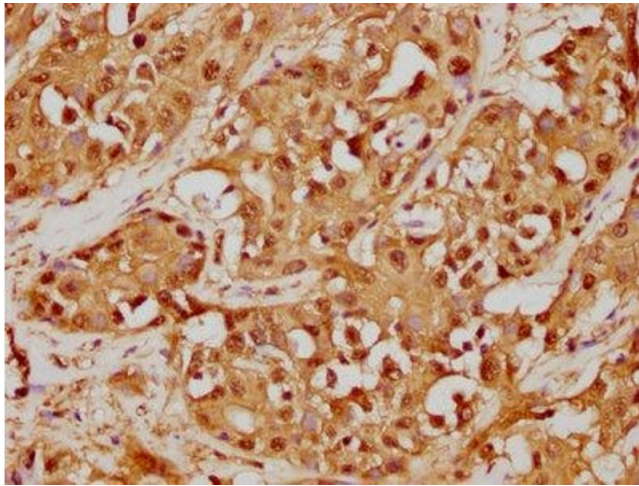
Buffer: Rabbit IgG in phosphate buffered saline , pH 7.4, 150 mM NaCl, 0.02 % sodium azide and 50 % glycerol.

Preservative: Sodium azide

Precaution of Use: This product contains Sodium azide: a POISONOUS AND HAZARDOUS SUBSTANCE which should be handled by trained staff only.

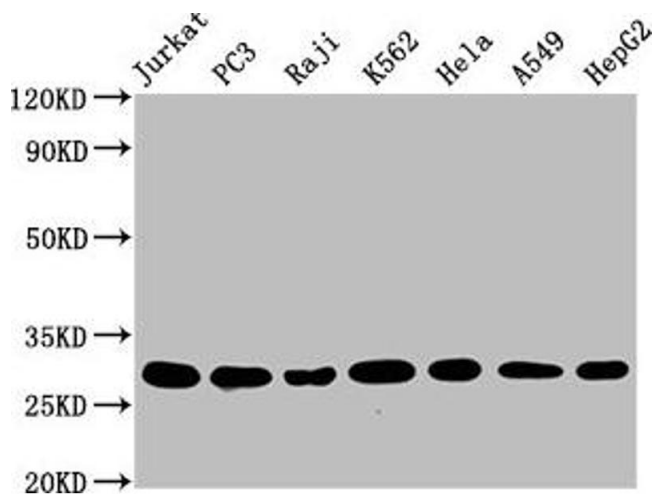
Storage: -20 °C,-80 °C

Storage Comment: Upon receipt, store at -20°C or -80°C. Avoid repeated freeze.



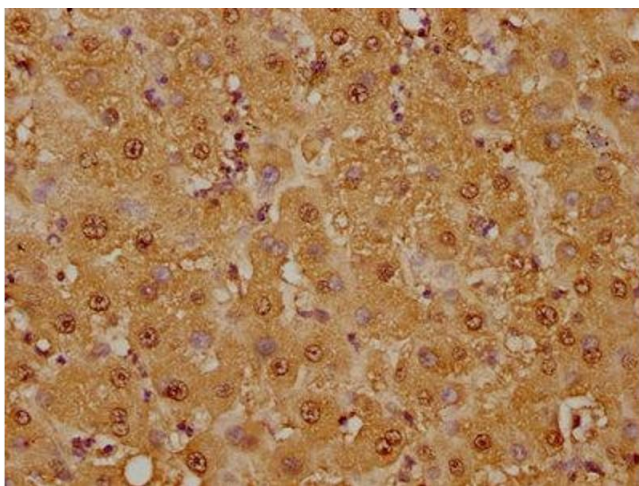
Immunohistochemistry

Image 1. IHC image of ABIN7127533 diluted at 1:125 and staining in paraffin-embedded human liver cancer performed on a Leica Bond™ system. After dewaxing and hydration, antigen retrieval was mediated by high pressure in a citrate buffer (pH 6.0). Section was blocked with 10 % normal goat serum 30 min at RT. Then primary antibody (1 % BSA) was incubated at 4 °C overnight. The primary is detected by a biotinylated secondary antibody and visualized using an HRP conjugated SP system.



Western Blotting

Image 2. Western Blot Positive WB detected in: Jurkat whole cell lysate, PC3 whole cell lysate, Raji whole cell lysate, K562 whole cell lysate, HeLa whole cell lysate, A549 whole cell lysate, HepG2 whole cell lysate All lanes: GSTO1 antibody at 1.25 µg/mL Secondary Goat polyclonal to rabbit IgG at 1/50000 dilution Predicted band size: 28, 24, 25 KDa Observed band size: 28 KDa



Immunohistochemistry

Image 3. IHC image of ABIN7127533 diluted at 1:125 and staining in paraffin-embedded human liver tissue performed on a Leica Bond™ system. After dewaxing and hydration, antigen retrieval was mediated by high pressure in a citrate buffer (pH 6.0). Section was blocked with 10 % normal goat serum 30 min at RT. Then primary antibody (1 % BSA) was incubated at 4 °C overnight. The primary is detected by a biotinylated secondary antibody and visualized using an HRP conjugated SP system.

Please check the [product details page](#) for more images. Overall 4 images are available for ABIN7127533.