

Datasheet for ABIN7127534

**Recombinant anti-Hepcidin antibody**[Go to Product page](#)**2** Images

## Overview

Quantity:	100 µL
Target:	Hepcidin (HAMP)
Reactivity:	Human
Host:	Rabbit
Antibody Type:	Recombinant Antibody
Clonality:	Monoclonal
Conjugate:	This Hepcidin antibody is un-conjugated
Application:	Western Blotting (WB), Immunohistochemistry (IHC), ELISA

## Product Details

Immunogen:	A synthesized peptide derived from human HAMP
Clone:	4C5
Isotype:	IgG
Cross-Reactivity:	Human
Purification:	Affinity-chromatography

## Target Details

Target:	Hepcidin (HAMP)
Alternative Name:	HAMP ( <a href="#">HAMP Products</a> )
Background:	Background: Liver-produced hormone that constitutes the main circulating regulator of iron

## Target Details

absorption and distribution across tissues. Acts by promoting endocytosis and degradation of ferroportin, leading to the retention of iron in iron-exporting cells and decreased flow of iron into plasma. Controls the major flows of iron into plasma: absorption of dietary iron in the intestine, recycling of iron by macrophages, which phagocytose old erythrocytes and other cells, and mobilization of stored iron from hepatocytes (PubMed:22306005).

Aliases: Hepcidin, Liver-expressed antimicrobial peptide 1, LEAP-1, Putative liver tumor regressor, PLTR, Hepcidin-25, Hepc25, Hepcidin-20, Hepc20, HAMP, HEPC, LEAP1, UNQ487/PRO1003

UniProt: [P81172](#)

Pathways: [Hormone Activity](#), [Transition Metal Ion Homeostasis](#)

## Application Details

Application Notes: Recommended dilution: WB:1:500-1:5000, IHC:1:50-1:200,

Restrictions: For Research Use only

## Handling

Format: Liquid

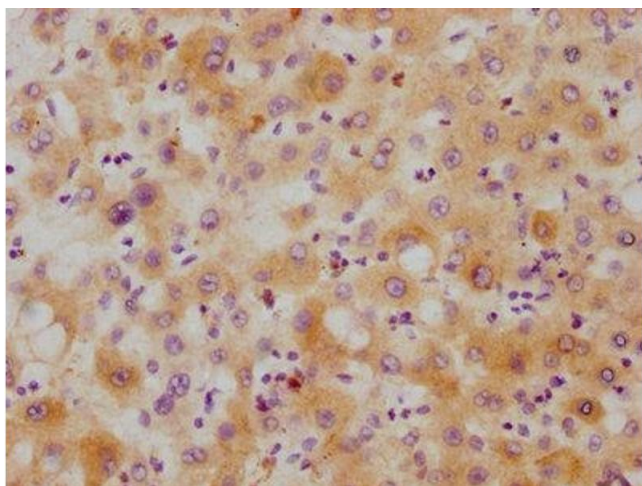
Buffer: Rabbit IgG in phosphate buffered saline , pH 7.4, 150 mM NaCl, 0.02 % sodium azide and 50 % glycerol.

Preservative: Sodium azide

Precaution of Use: This product contains Sodium azide: a POISONOUS AND HAZARDOUS SUBSTANCE which should be handled by trained staff only.

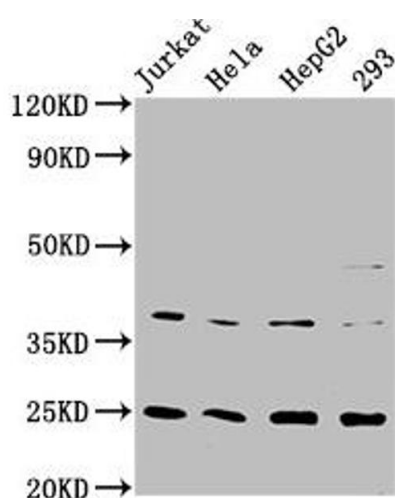
Storage: -20 °C,-80 °C

Storage Comment: Upon receipt, store at -20°C or -80°C. Avoid repeated freeze.



### Immunohistochemistry

**Image 1.** IHC image of ABIN7127534 diluted at 1:215 and staining in paraffin-embedded human liver tissue performed on a Leica Bond™ system. After dewaxing and hydration, antigen retrieval was mediated by high pressure in a citrate buffer (pH 6.0). Section was blocked with 10 % normal goat serum 30 min at RT. Then primary antibody (1 % BSA) was incubated at 4 °C overnight. The primary is detected by a biotinylated secondary antibody and visualized using an HRP conjugated SP system.



### Western Blotting

**Image 2.** Western Blot Positive WB detected in: Jurkat whole cell lysate, HeLa whole cell lysate, HepG2 whole cell lysate, 293 whole cell lysate All lanes: HAMP antibody at 2.15 µg/mL Secondary Goat polyclonal to rabbit IgG at 1/50000 dilution Predicted band size: 10 KDa Observed band size: 25 KDa