

Datasheet for ABIN7127547

**Recombinant anti-HNRNPC antibody****5** Images[Go to Product page](#)

## Overview

Quantity:	100 µL
Target:	HNRNPC
Reactivity:	Human
Host:	Rabbit
Antibody Type:	Recombinant Antibody
Clonality:	Monoclonal
Conjugate:	This HNRNPC antibody is un-conjugated
Application:	Western Blotting (WB), ELISA, Immunohistochemistry (IHC), Immunofluorescence (IF), Immunoprecipitation (IP), Flow Cytometry (FACS)

## Product Details

Immunogen:	A synthesized peptide derived from human HNRNPC
Clone:	9G1
Isotype:	IgG
Cross-Reactivity:	Human
Purification:	Affinity-chromatography

## Target Details

Target:	HNRNPC
Alternative Name:	HNRNPC ( <a href="#">HNRNPC Products</a> )

## Target Details

Background:	<p>Background: Binds pre-mRNA and nucleates the assembly of 40S hnRNP particles (PubMed:8264621). Interacts with poly-U tracts in the 3'-UTR or 5'-UTR of mRNA and modulates the stability and the level of translation of bound mRNA molecules (PubMed:12509468, PubMed:16010978, PubMed:7567451, PubMed:8264621). Single HNRNPC tetramers bind 230-240 nucleotides. Trimers of HNRNPC tetramers bind 700 nucleotides (PubMed:8264621). May play a role in the early steps of spliceosome assembly and pre-mRNA splicing. N6-methyladenosine (m6A) has been shown to alter the local structure in mRNAs and long non-coding RNAs (lncRNAs) via a mechanism named 'm(6)A-switch', facilitating binding of HNRNPC, leading to regulation of mRNA splicing (PubMed:25719671).</p> <p>Aliases: Heterogeneous nuclear ribonucleoproteins C1/C2, hnRNP C1/C2, HNRNPC, HNRPC</p>
-------------	--

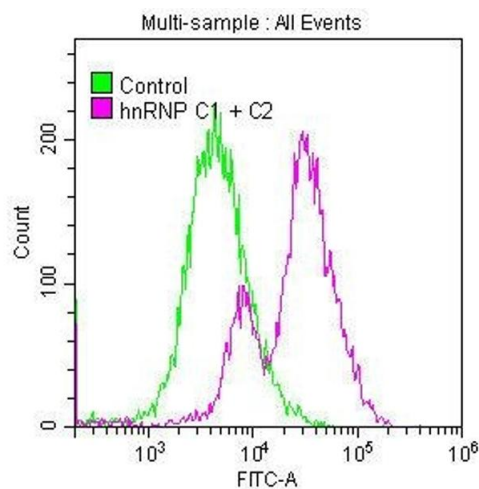
UniProt: [P07910](#)

## Application Details

Application Notes:	Recommended dilution: WB:1:500-1:5000, IHC:1:50-1:200, IF:1:20-1:200, IP:1:200-1:1000,
Restrictions:	For Research Use only

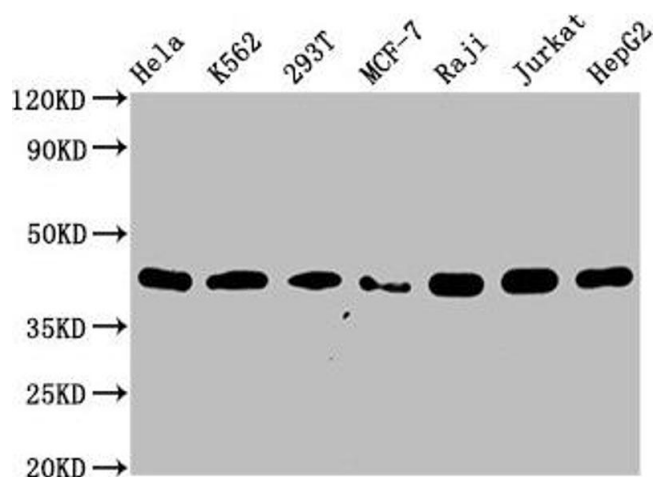
## Handling

Format:	Liquid
Buffer:	Rabbit IgG in phosphate buffered saline , pH 7.4, 150 mM NaCl, 0.02 % sodium azide and 50 % glycerol.
Preservative:	Sodium azide
Precaution of Use:	This product contains Sodium azide: a POISONOUS AND HAZARDOUS SUBSTANCE which should be handled by trained staff only.
Storage:	-20 °C,-80 °C
Storage Comment:	Upon receipt, store at -20°C or -80°C. Avoid repeated freeze.



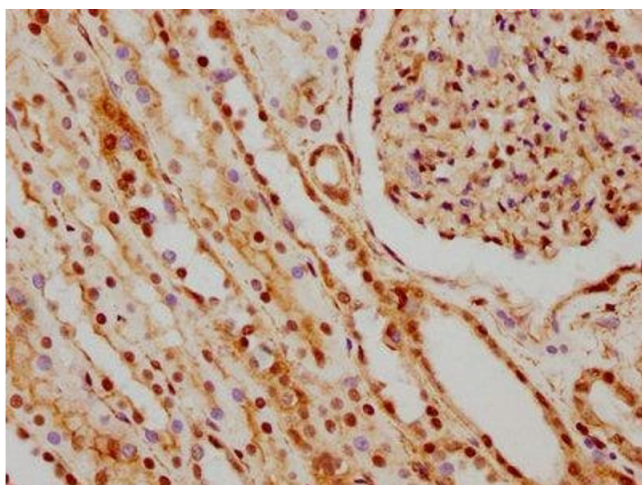
### Flow Cytometry

**Image 1.** Overlay histogram showing MCF-7 cells stained with ABIN7127547 (red line) at 1:50. The cells were fixed with 70 % Ethylalcohol (18h) and then permeabilized with 0.3 % Triton X-100 for 2 min. The cells were then incubated in 1x PBS /10 % normal goat serum to block non-specific protein-protein interactions followed by primary antibody for 1 h at 4 °C. The secondary antibody used was FITC goat anti-rabbit IgG (H+L) at 1/200 dilution for 1 h at 4 °C. Control antibody (green line) was used under the same conditions. Acquisition of >10,000 events was performed.



### Western Blotting

**Image 2.** Western Blot Positive WB detected in: HeLa whole cell lysate, K562 whole cell lysate, 293T whole cell lysate, MCF-7 whole cell lysate, Raji whole cell lysate, Jurkat whole cell lysate, HepG2 whole cell lysate. All lanes: hnRNP C1 + C2 antibody at 0.66 µg/mL. Secondary Goat polyclonal to rabbit IgG at 1/50000 dilution. Predicted band size: 34, 33, 26, 28 KDa. Observed band size: 42 KDa.



### Immunohistochemistry

**Image 3.** IHC image of ABIN7127547 diluted at 1:66.35 and staining in paraffin-embedded human kidney tissue performed on a Leica Bond™ system. After dewaxing and hydration, antigen retrieval was mediated by high pressure in a citrate buffer (pH 6.0). Section was blocked with 10 % normal goat serum 30 min at RT. Then primary antibody (1 % BSA) was incubated at 4 °C overnight. The primary is detected by a biotinylated secondary antibody and visualized using an HRP conjugated SP system.

Please check the [product details page](#) for more images. Overall 5 images are available for ABIN7127547.