

Datasheet for ABIN7127557

Recombinant anti-HSP27 antibody**6** Images[Go to Product page](#)

Overview

Quantity:	100 µL
Target:	HSP27 (HSPB1)
Reactivity:	Human
Host:	Rabbit
Antibody Type:	Recombinant Antibody
Clonality:	Monoclonal
Conjugate:	This HSP27 antibody is un-conjugated
Application:	Western Blotting (WB), Immunohistochemistry (IHC), ELISA, Immunofluorescence (IF), Flow Cytometry (FACS), Immunoprecipitation (IP)

Product Details

Immunogen:	A synthesized peptide derived from human HSPB1
Clone:	10C11
Isotype:	IgG
Cross-Reactivity:	Human
Purification:	Affinity-chromatography

Target Details

Target:	HSP27 (HSPB1)
Alternative Name:	HSPB1 (HSPB1 Products)

Target Details

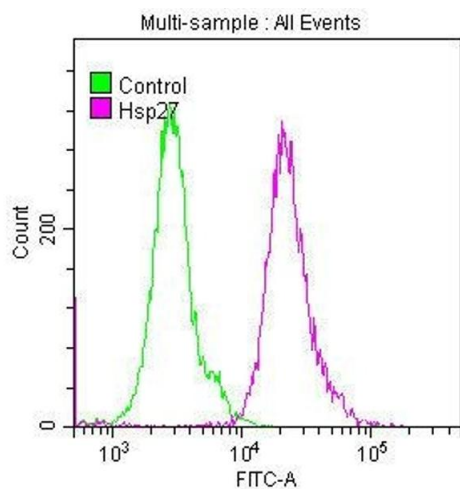
Background:	Background: Small heat shock protein which functions as a molecular chaperone probably maintaining denatured proteins in a folding-competent state (PubMed:10383393, PubMed:20178975). Plays a role in stress resistance and actin organization (PubMed:19166925). Through its molecular chaperone activity may regulate numerous biological processes including the phosphorylation and the axonal transport of neurofilament proteins (PubMed:23728742). Aliases: Heat shock protein beta-1, HspB1, 28 kDa heat shock protein, Estrogen-regulated 24 kDa protein, Heat shock 27 kDa protein, HSP 27, Stress-responsive protein 27, SRP27, HSPB1, HSP27, HSP28
UniProt:	P04792
Pathways:	MAPK Signaling , Regulation of Actin Filament Polymerization , Signaling Events mediated by VEGFR1 and VEGFR2 , Negative Regulation of intrinsic apoptotic Signaling , VEGF Signaling

Application Details

Application Notes:	Recommended dilution: WB:1:500-1:5000, IHC:1:50-1:200, IF:1:20-1:200, IP:1:200-1:1000,
Restrictions:	For Research Use only

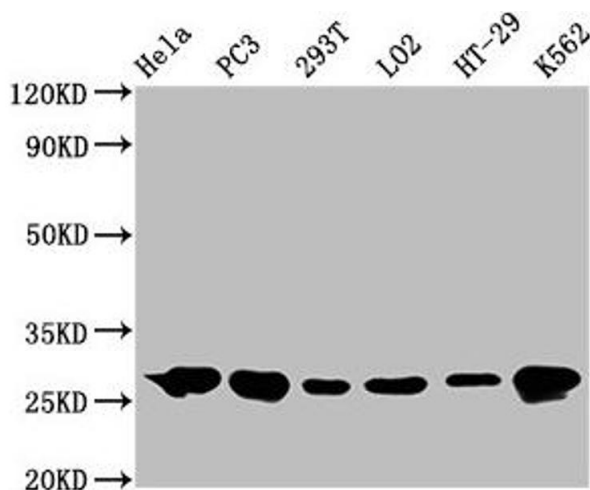
Handling

Format:	Liquid
Buffer:	Rabbit IgG in phosphate buffered saline , pH 7.4, 150 mM NaCl, 0.02 % sodium azide and 50 % glycerol.
Preservative:	Sodium azide
Precaution of Use:	This product contains Sodium azide: a POISONOUS AND HAZARDOUS SUBSTANCE which should be handled by trained staff only.
Storage:	-20 °C,-80 °C
Storage Comment:	Upon receipt, store at -20°C or -80°C. Avoid repeated freeze.



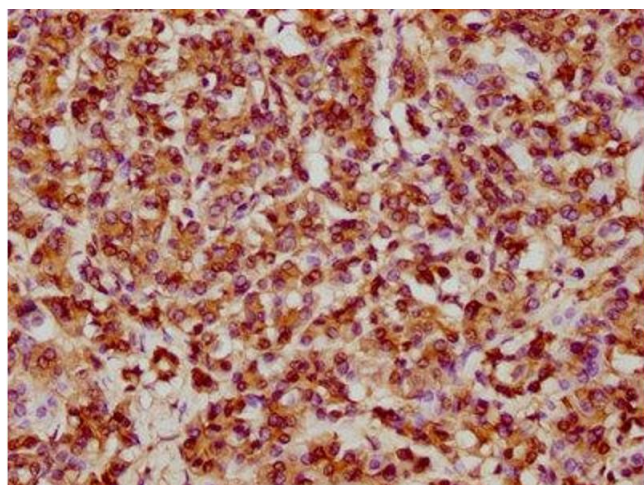
Flow Cytometry

Image 1. Overlay histogram showing HeLa cells stained with ABIN7127557 (red line) at 1:50. The cells were fixed with 70 % Ethylalcohol (18h) and then permeabilized with 0.3 % Triton X-100 for 2 min. The cells were then incubated in 1x PBS /10 % normal goat serum to block non-specific protein-protein interactions followed by primary antibody for 1 h at 4 °C. The secondary antibody used was FITC goat anti-rabbit IgG (H+L) at 1/200 dilution for 1 h at 4 °C. Control antibody (green line) was used under the same conditions. Acquisition of >10,000 events was performed.



Western Blotting

Image 2. Western Blot Positive WB detected in: HeLa whole cell lysate, PC3 whole cell lysate, 293T whole cell lysate, LO2 whole cell lysate, HT-29 whole cell lysate, K562 whole cell lysate All lanes: Hsp27 antibody at 0.62 µg/mL Secondary Goat polyclonal to rabbit IgG at 1/50000 dilution Predicted band size: 23 KDa Observed band size: 27 KDa



Immunohistochemistry

Image 3. IHC image of ABIN7127557 diluted at 1:61.9 and staining in paraffin-embedded human pancreatic tissue performed on a Leica Bond™ system. After dewaxing and hydration, antigen retrieval was mediated by high pressure in a citrate buffer (pH 6.0). Section was blocked with 10 % normal goat serum 30 min at RT. Then primary antibody (1 % BSA) was incubated at 4 °C overnight. The primary is detected by a biotinylated secondary antibody and visualized using an HRP conjugated SP system.

Please check the [product details page](#) for more images. Overall 6 images are available for ABIN7127557.